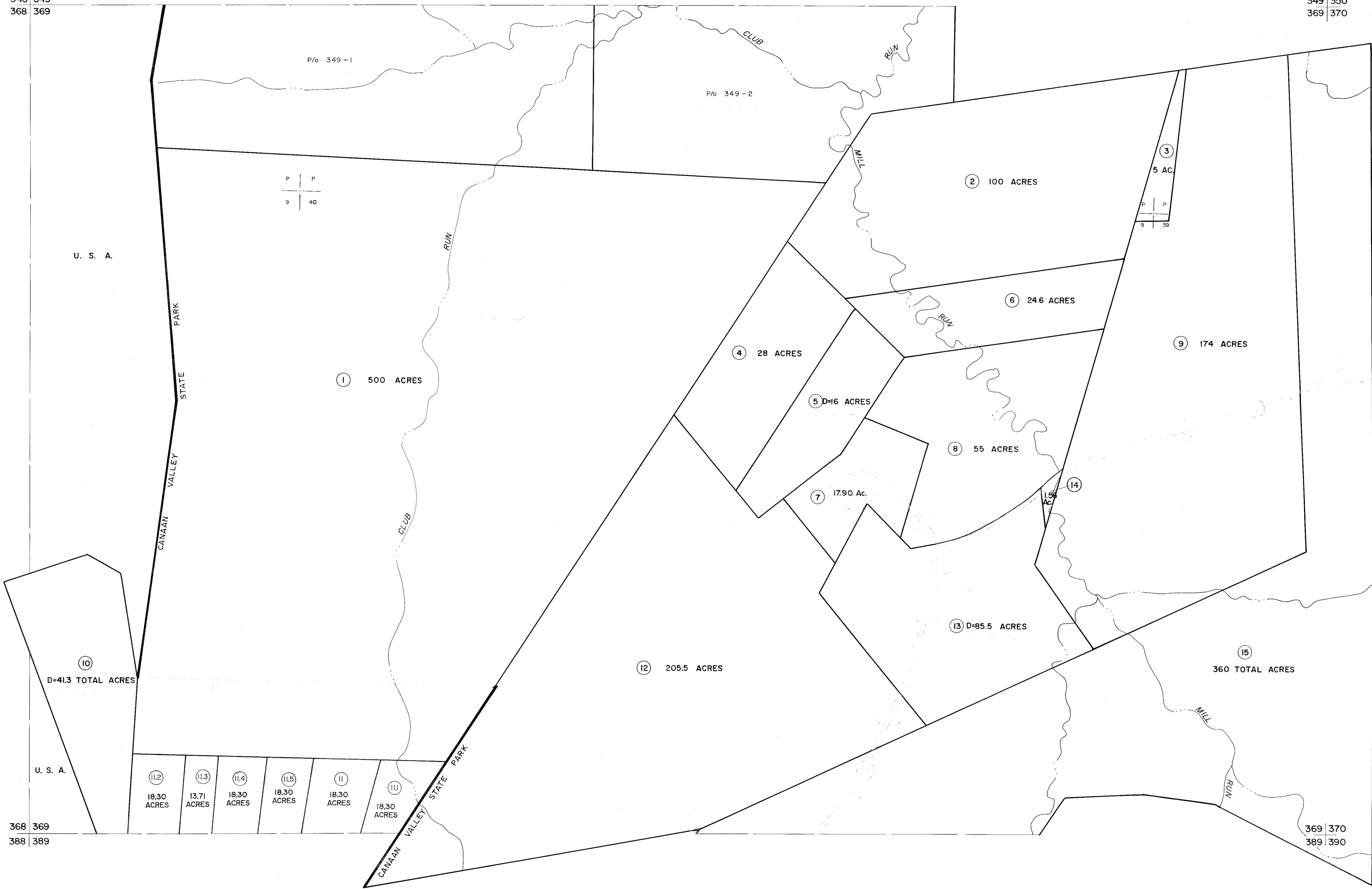


348 349  
368 369

349 350  
369 370



For Tax Purposes Only

Prepared by  
MICHAEL BAKER, JR., INC.  
Consulting Engineers  
Rochester, Pennsylvania

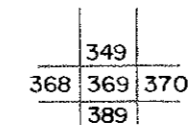
Legend

|                             |   |                        |      |
|-----------------------------|---|------------------------|------|
| Property line               | — | Original lot line      | —    |
| Edge of pavement or roadway | — | Deed lot number        | (15) |
| Corporation line            | — | Parcel or index number | o    |
| District line               | — | Improvement            | —    |
| County line                 | — | Railroad               | —    |

Revisions

|   |                 |        |    |    |
|---|-----------------|--------|----|----|
| 1 | REV. TO 7-1-83  | NCS    | 9  | 17 |
| 2 | 7-1-84          | L.E.S. | 10 | 18 |
| 3 | OGIS 1/6/91     | DSH    | 11 | 19 |
| 4 | OGIS 1/31/93    | DSH    | 12 | 20 |
| 5 | SLS INC. 3/2/00 | JWM    | 13 | 21 |
| 6 |                 |        | 14 | 22 |
| 7 |                 |        | 15 | 23 |
| 8 |                 |        | 16 | 24 |

KEY MAP



TUCKER COUNTY  
STATE OF WEST VIRGINIA  
Office of Assessor

DISTRICT

DRY FORK

SHEET NO: 369

Date, Aerial Photography: November, 1961 Date, Map: Dec., 1962  
Photo No: Scale: 1" = 400'