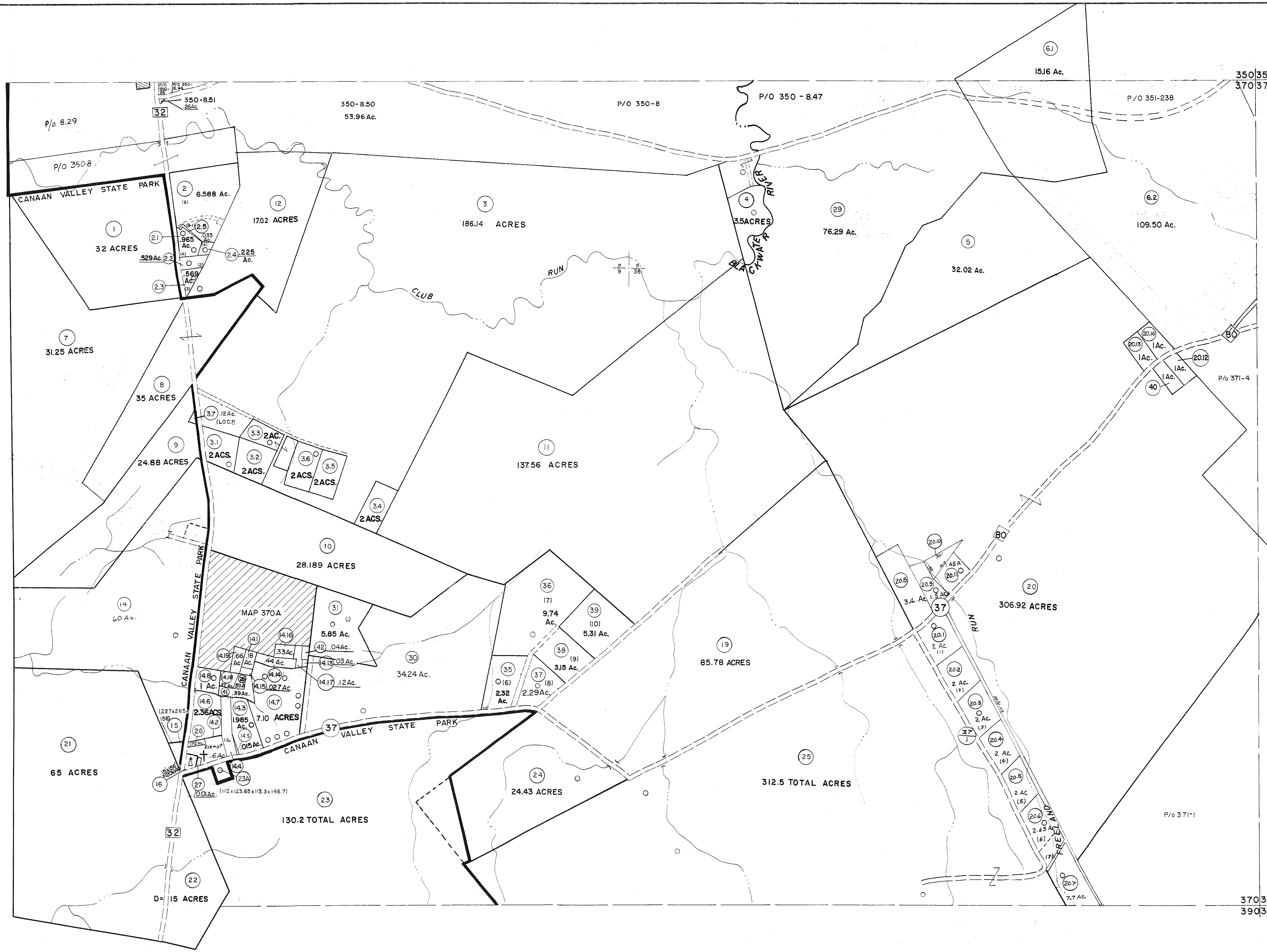


349350  
369370

350351  
370371



369370  
389390

370371  
390391

For Tax Purposes Only

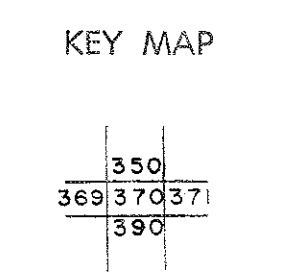
Prepared by  
MICHAEL BAKER, JR., INC.  
Consulting Engineers  
Rochester, Pennsylvania

**Legend**

Property line	---	Original lot line	---
Edge of pavement or roadway	---	Deed lot number	(15)
Corporation line	---	Parcel or index number	(99)
District line	---	Improvement	o
County line	---	Railroad	---

**Revisions**

1	6-6-75	SH	9	Rev. to 3-1-89	R.E.B.	17	SLS INC. 1/28/99	DSW
2	11-27-78	DG	10	OGIS 1/6/91	DSH	18	SLS INC. 3/2/00	JWM
3	REV. TO 7-1-83	NCS	11	OGIS 3-19-92	TL	19	ESI 2/2/01	REK
4	7-1-84	L.E.S.	12	OGIS 1/31/93	DSH	20	ESI 2/12/02	REK
5	Revised to		13	OGIS 12/12/93	SAJ	21	ESI 2/20/03	REK
6	REV. TO 7-1-85	NCS	14	OGIS 2-95	HD	22	3/21/05	S&H
7	July, 1986	TRL	15	O.G.I.S 4-1-96	J.E.B.	23	6/27/11	S&H
8	Revised to 7-1-87		16	SLS INC. 3/3/98	JWM	24	5/25/15	S&H



**TUCKER COUNTY**  
STATE OF WEST VIRGINIA  
Office of Assessor

DISTRICT  
**DRY FORK**

**SHEET NO: 370**

Date, Aerial Photography: November, 1961 Date, Map: Dec., 1962  
Photo No: Scale: 1" = 400'