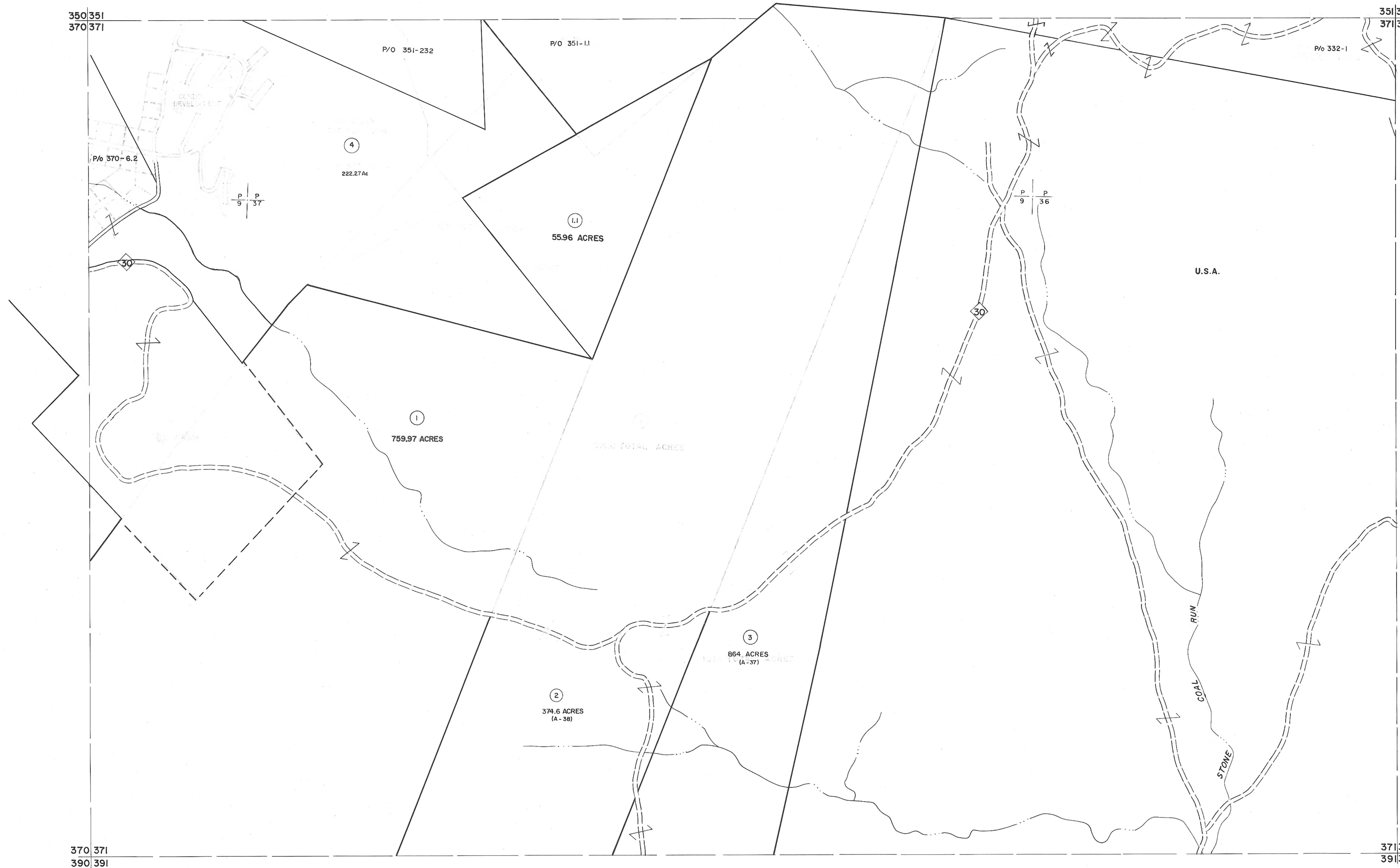


350|351
370|371

351|352
371|372



For Tax Purposes Only
 Prepared by
MICHAEL BAKER, JR., INC.
Consulting Engineers
 Rochester, Pennsylvania

Legend	
Property line	—————
Edge of pavement or roadway	—————
Corporation line	—————
District line	—————
County line	—————
Original lot line	-----
Dead lot number	(15)
Parcel or index number	(15)
Improvement	○
Railroad	—+—+—+—

Revisions							
1	1/1-27-78	DC	9	ESI	2/2/01	REK	17
2	REV. TO 7-1-83	NCS	10	ESI	2/12/02	REK	18
3	7-1-84	L.E.S.	11	ESI	2/20/03	REK	19
4	REV. TO 7-1-85	NCS	12	5-4-13		#12	20
5	July, 1986	TRL	13				21
6	OGIS 1/6/91	DSH	14				22
7	OGIS 2/1/93	DSH	15				23
8	SLS INC. 3/2/00	JWM	16				24



TUCKER COUNTY
 STATE OF WEST VIRGINIA
 Office of Assessor

DISTRICT	DRY FORK
SHEET NO: 371	
Date, Aerial Photography: November, 1961	Date, Map: Dec, 1962
Photo No:	Scale: 1" = 400'