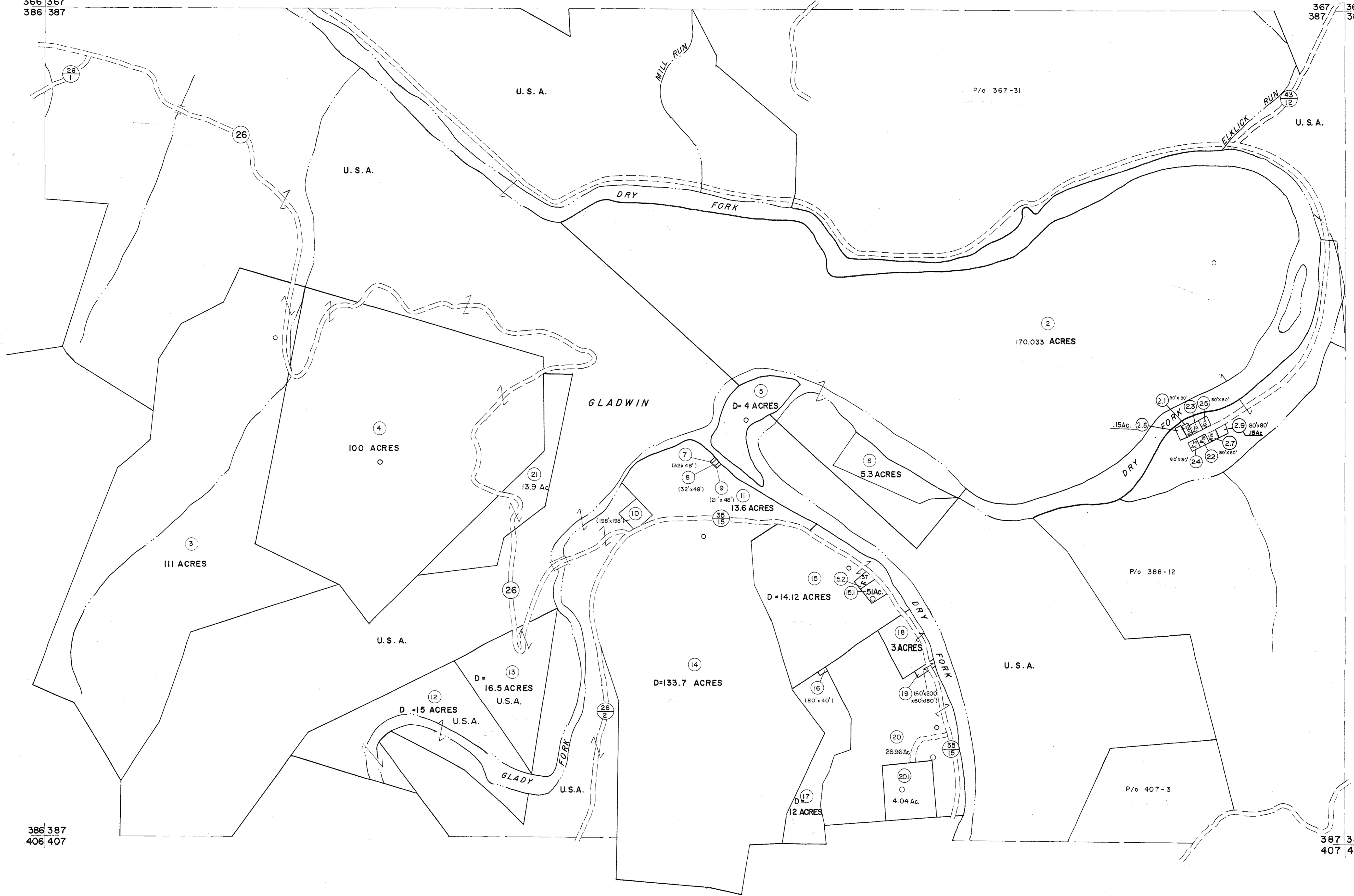


366 367
386 387

367 368
387 388



For Tax Purposes Only

Prepared by
MICHAEL BAKER, JR., INC.
Consulting Engineers
Rochester, Pennsylvania

Legend	
Property line	Original lot line
Edge of pavement or roadway	Deed lot number
Corporation line	Parcel or index number
District line	Improvement
County line	Railroad

Revisions	
1	11-27-78 O.G.
2	REV. TO 7-1-83 NCS
3	7-1-84 L.E.S.
4	REV. TO 7-1-85 NCS
5	July, 1986 TRL
6	Revised 6-7-87
7	OGIS 1/6/91 DSH
8	OGIS 3-19-92 TL
9	OGIS 2/1/93 DSH
10	OGIS 12/12/93 SAJ
11	SLS INC. 1/28/98 DSW
12	REV. TO 2/21/00
13	ESI 2/20/03
14	3/24/07 S & H
15	6-22-08 H & S
16	
17	5/25/15 S & H
18	
19	
20	
21	
22	
23	
24	

KEY MAP

TUCKER COUNTY
STATE OF WEST VIRGINIA
Office of Assessor

DISTRICT
DRY FORK

SHEET NO: 387

Date, Aerial Photography: November, 1961 Date, Map: Dec, 1962
Photo No. Scale: 1" = 400'

386 387
406 407

387 388
407 408