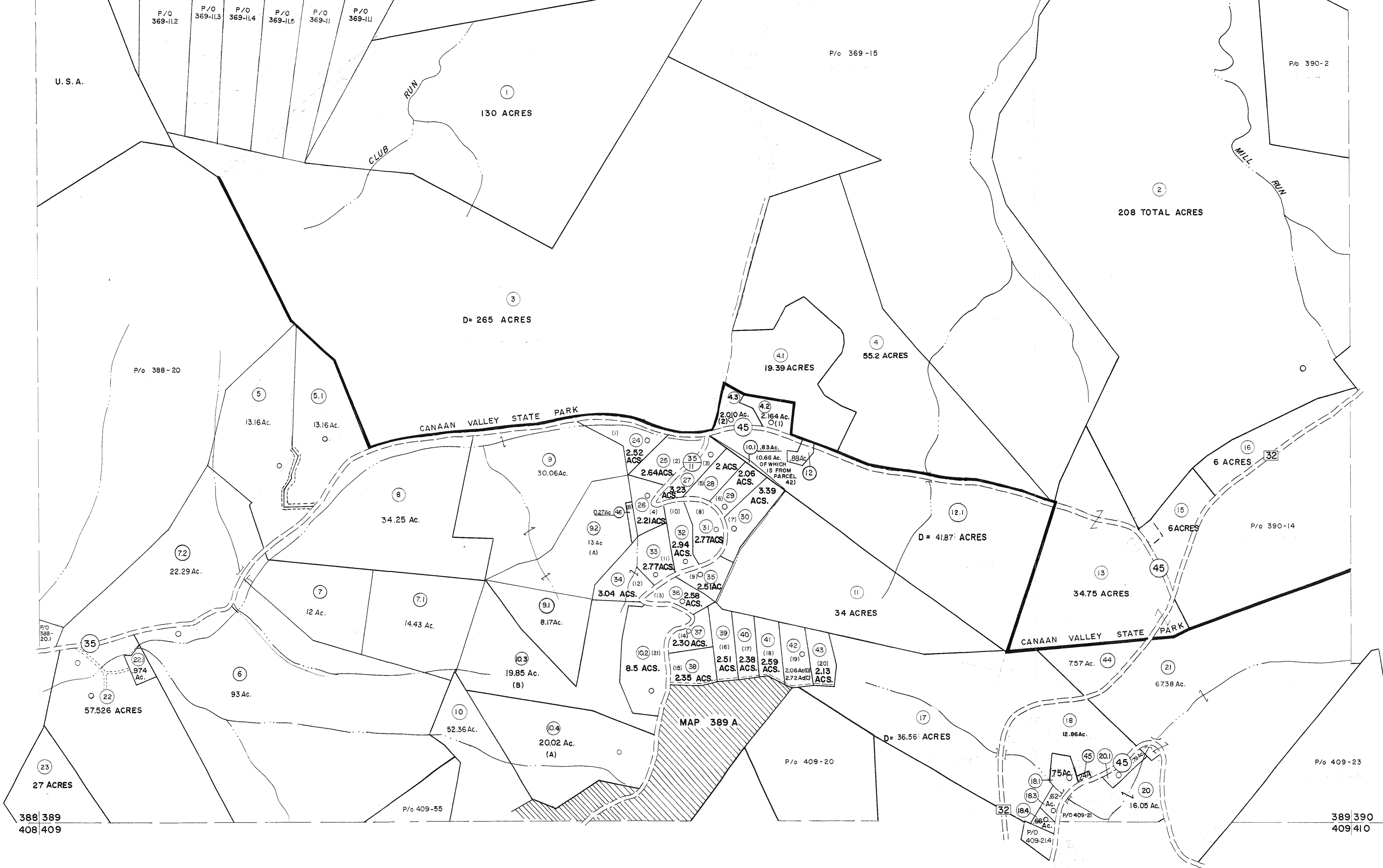


368 369
388 389

369 370
389 390



For Tax Purposes Only
 Prepared by
MICHAEL BAKER, JR., INC.
 Consulting Engineers
 Rochester, Pennsylvania

Legend

Property line	—	Original lot line	---
Edge of pavement or roadway	—	Deed lot number	(15)
Corporation line	—	Parcel or index number	(9)
District line	—	Improvement	○
County line	—	Railroad	—

Revisions

1	11-27-78	DG	9	OGIS	2/1/93	DSH	17	3/21/05	S&H
2	REV. TO 7-1-83	NCS	10	OGIS	12/12/93	SAJ	18	6-22-08	H&S
3	7-1-84	L.E.S.	11	OGIS	2-95	HD	19	6-21-09	H&S
4	Revised to 7-1-87	TR	12	O.G.I.S.	4-1-96	J.E.B.	20	6/28/11	S&H
5	July, 1986	TRL	13	SLS INC.	1/28/99	DSW	21	5-4-13	H&S
6	Revised to 7-1-87	TR	14	SLS INC.	2/21/00	JAW	22	5/25/15	S&H
7	Rev. to 3-1-89	R.E.B.	15	ESI	2/2/01	REX	23		
8	OGIS	1/6/91	DSH	HBS	2/19/04		24		

KEY MAP
 368
 388 389 390
 408

TUCKER COUNTY
 STATE OF WEST VIRGINIA
 Office of Assessor

DISTRICT
DRY FORK
SHEET NO: 389
 Date, Aerial Photography: November 1961 Date, Map: Dec. 1962
 Photo No. Scale: 1" = 400'