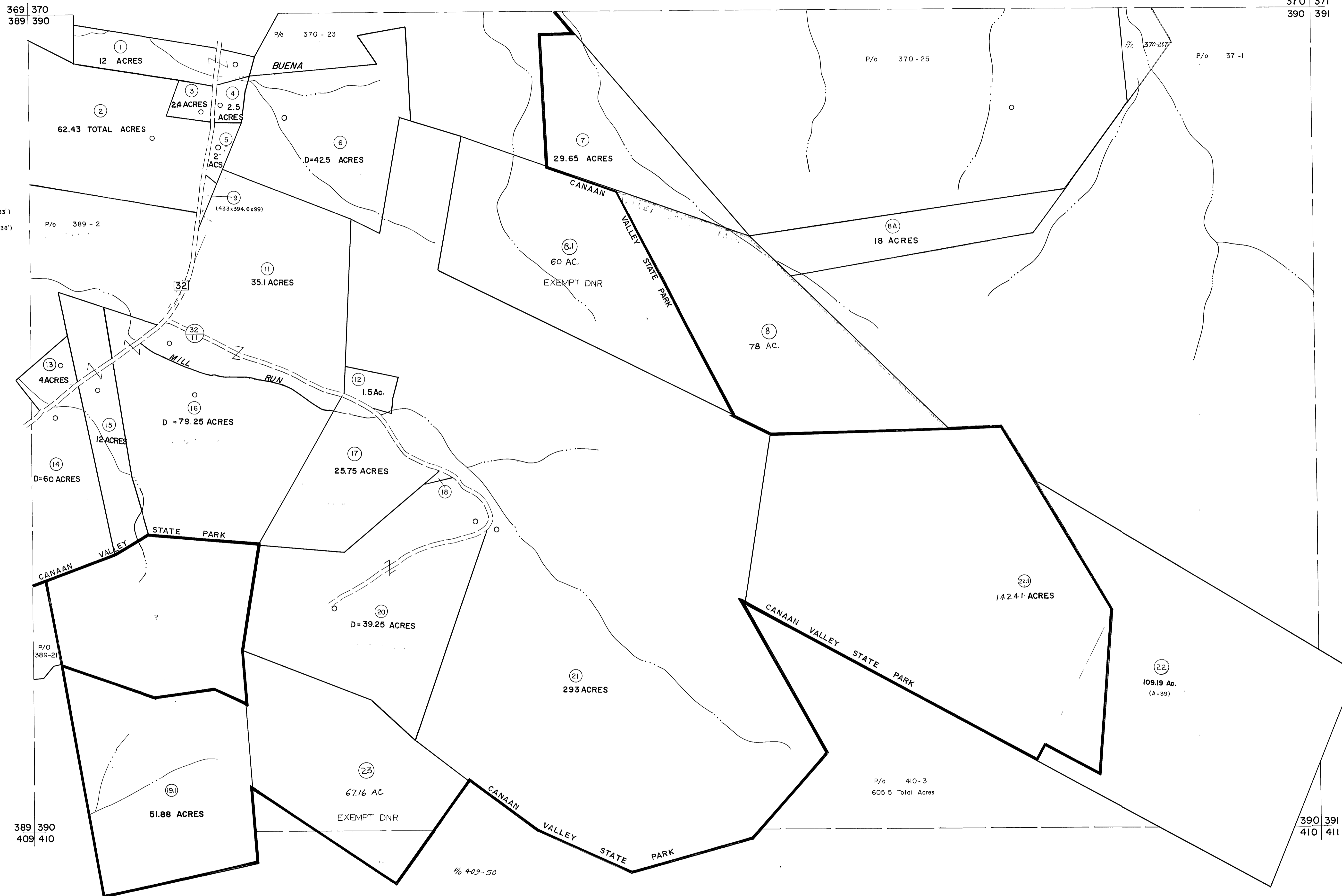


369 370
389 390

370 371
390 391

10 (394' x 99' x 433')
18 (148' x 148' x 138')



For Tax Purposes Only

Prepared by
MICHAEL BAKER, JR., INC.
Consulting Engineers
Rochester, Pennsylvania

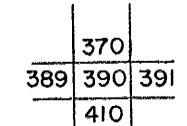
Legend

| | | | |
|-----------------------------|-------|------------------------|-------|
| Property line | ----- | Original lot line | ----- |
| Edge of pavement or roadway | ----- | Deed lot number | (15) |
| Corporation line | ----- | Parcel or index number | (22) |
| District line | ----- | Improvement | o |
| County line | ----- | Railroad | ----- |

Revisions

| | | | | | |
|---|----------------|----|---------|-----|----|
| 1 | 10-3-63 | 9 | 6/27/11 | S&H | 17 |
| 2 | 6-5-75 | 10 | | | 18 |
| 3 | REV. TO 7-1-83 | 11 | | | 19 |
| 4 | 7-1-84 | 12 | | | 20 |
| 5 | July, 1986 | 13 | | | 21 |
| 6 | OGIS 1/6/91 | 14 | | | 22 |
| 7 | OGIS 2/1/93 | 15 | | | 23 |
| 8 | OGIS 12/12/93 | 16 | | | 24 |

KEY MAP



TUCKER COUNTY
STATE OF WEST VIRGINIA
Office of Assessor

DISTRICT

DRY FORK

SHEET NO: 390

Date, Aerial Photography: November, 1961 Date, Map: Dec., 1962
Photo No: Scale: 1" = 400'