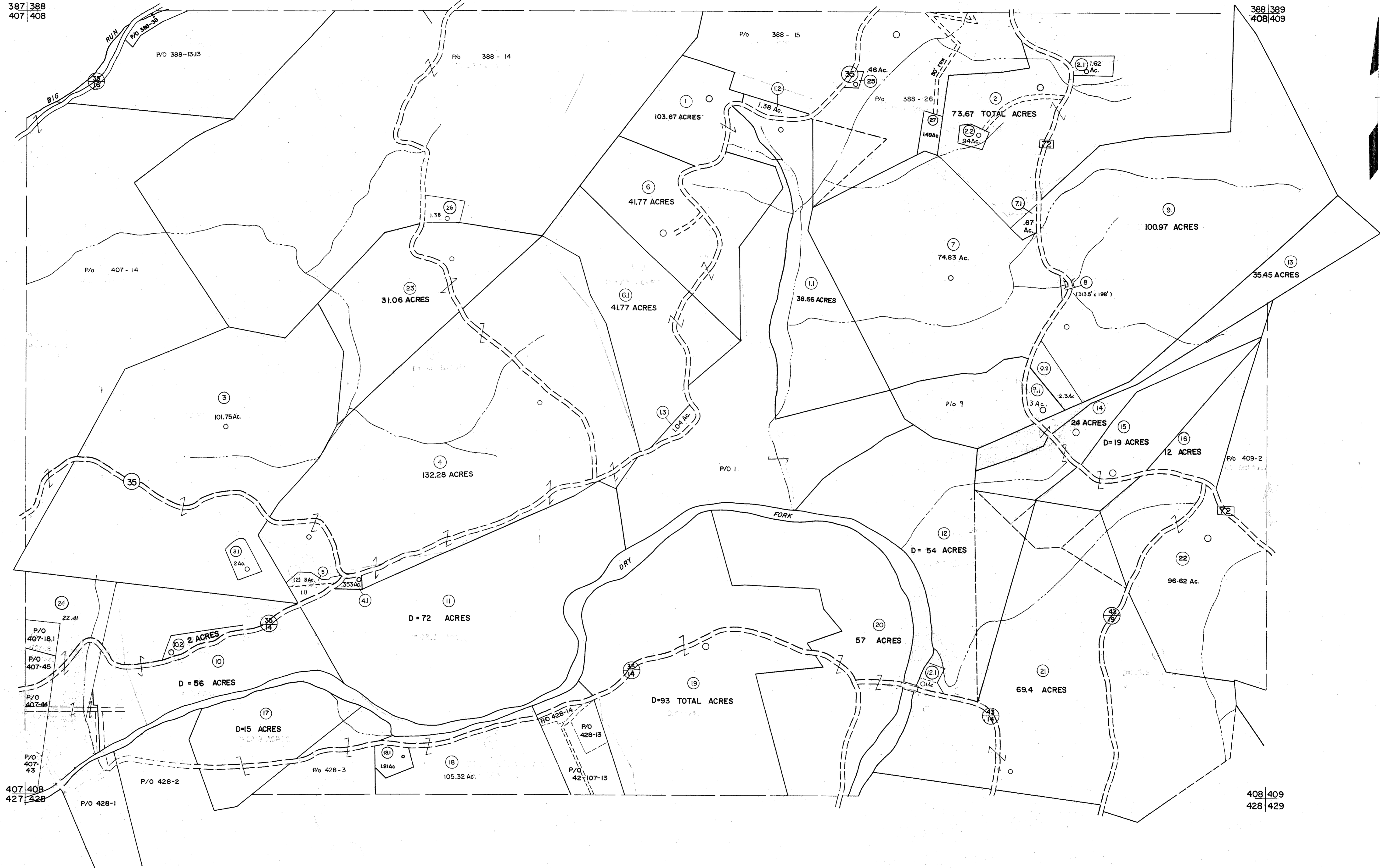


387 | 388  
407 | 408

388 | 389  
408 | 409



For Tax Purposes Only

Prepared by  
MICHAEL BAKER, JR., INC.  
Consulting Engineers  
Rochester, Pennsylvania

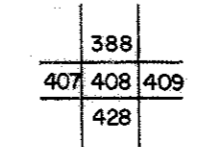
Legend

Property line	———	Original lot line	———
Edge of pavement or roadway	———	Deed lot number	(15)
Corporation line	———	Parcel or index number	(20)
District line	———	Improvement	○
County line	———	Railroad	———

Revisions

1	6-3-64	9	OGIS	1/6/91	DSH	17	ESI	2/20/03	REK
2	6-4-75	10	T.E.	3-19-92	TL	18	6-22-08	445	
3	11-27-79	11	OGIS	2/1/93	DSH	19	6-21-09	445	
4	REV. TO 7-1-83	12	OGIS	12/12/93	SAJ	20	5-10-16	445	
5	7-1-84	13	L.E.S.	4-1-96	J.E.B.	21	6/27/11	S&H	
6	REV. TO 7-1-85	14	NCS	SLS INC. - DDC	5/97	22	5-4-13	445	
7	July, 1986	15	TRL	SLS INC. 1/28/99	DSW	23	5/25/15	S&H	
8	Rev. to 3-1-89	16	REK	ES1	2/2/01	24			

KEY MAP



TUCKER COUNTY  
STATE OF WEST VIRGINIA  
Office of Assessor

DISTRICT

DRY FORK

SHEET NO: 408

Date, Aerial Photography:  
Photo No:

Date, Map:  
Scale: