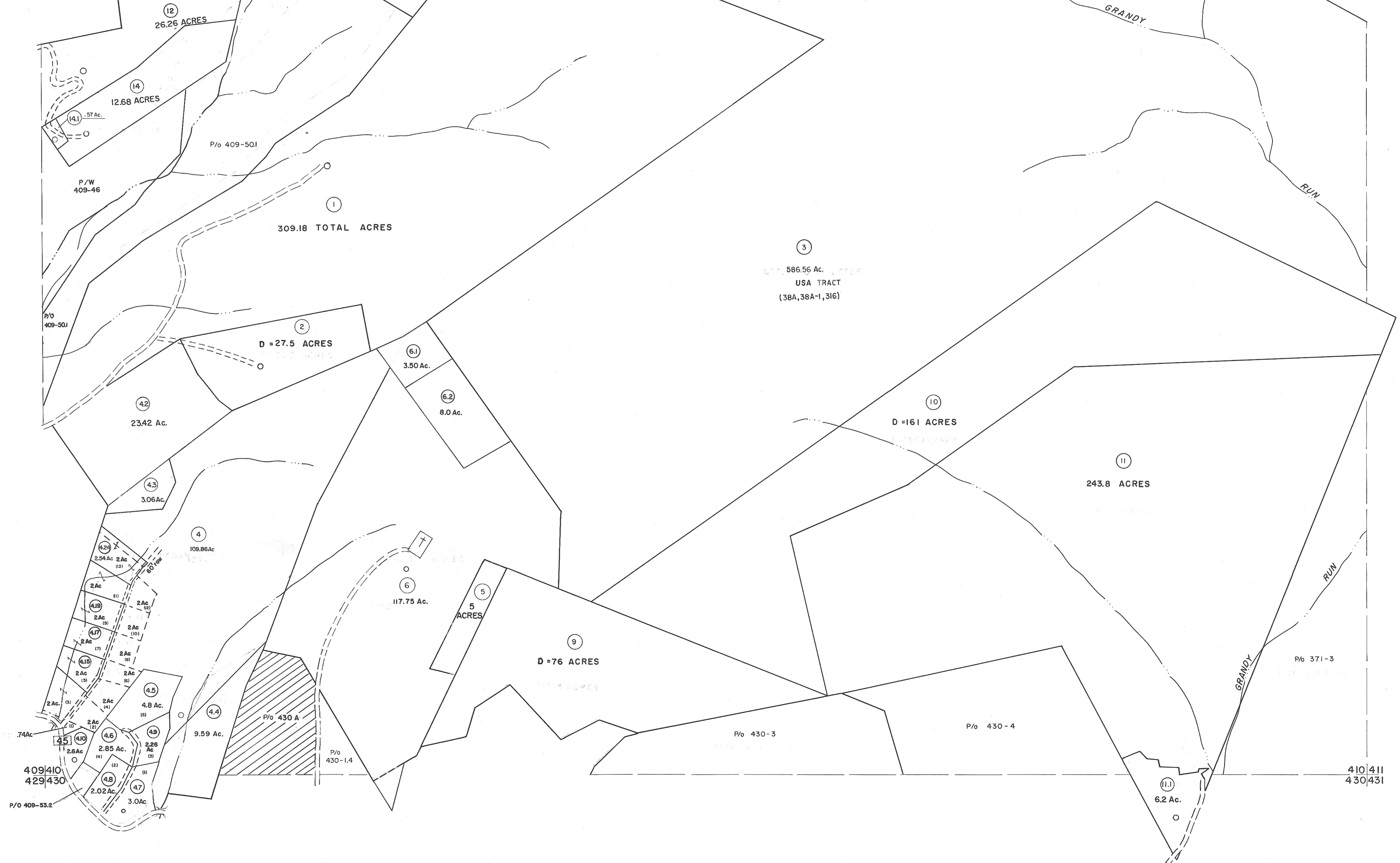


389|390
409|410

390|391
410|411



For Tax Purposes Only

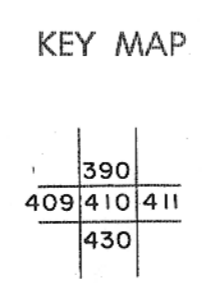
Prepared by
MICHAEL BAKER, JR., INC.
Consulting Engineers
Rochester, Pennsylvania

Legend

Property line	---	Original lot line	---
Edge of pavement or roadway	---	Dead lot number	(15)
Corporation line	---	Parcel or index number	(99)
District line	---	Improvement	o
County line	---	Railroad	+

Revisions

REV.	DATE	BY	DESCRIPTION	REV.	DATE	BY	DESCRIPTION
1	11-27-78	DC	SLS INC. - DDC 5/97	17	6-22-08	JK	4.5
2	REV. TO 7-1-83	NCS	SLS INC. 3/4/98 JWM	18	6-21-09	JK	4.5
3	7-1-84	L.E.S.	SLS INC. 1/28/98 DSW	19	6/27/11	SBH	
4	REV. TO 7-1-85	NCS	ESI 2/12/02 REK	20	5-4-13	JK	4.5
5	REV. TO 3-1-89	R.E.B.	ESI 2/20/03 REK	21			
6	OGIS 2/1/93	DSH	HBS 2/04	22			
7	OGIS 12/12/93	SAJ		23		SBH	
8	O.G.I.S 4-1-96	J.E.B.	3/18/06	24		SBH	



TUCKER COUNTY
STATE OF WEST VIRGINIA
Office of Assessor

DISTRICT **DRY FORK**

SHEET NO: 410

Date, Aerial Photography: Nov., 1961 Date, Map: Dec., 1962
Photo No: Scale: 1" = 400'