

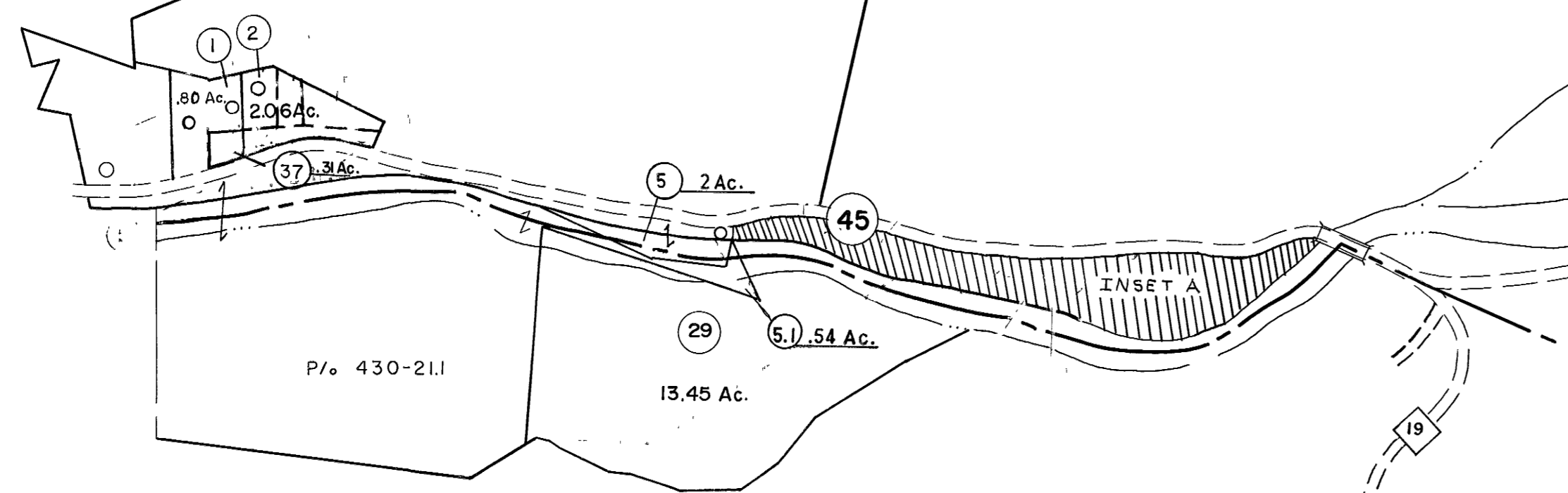
410 411
430 431

411 412
431 432

P/6 371-3

U.S.A.

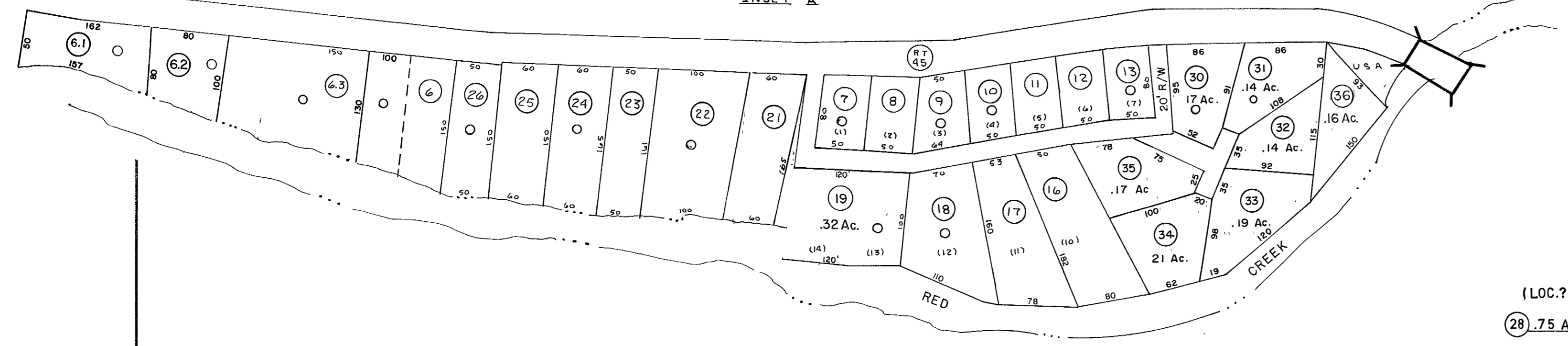
U.S.A.



DRY FORK DISTRICT
TUCKER COUNTY
RANDOLPH COUNTY

WEST
WEST VIRGINIA
VIRGINIA

INSET A



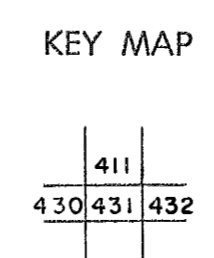
430 431

431 432

For Tax Purposes Only
Prepared by
MICHAEL BAKER, JR., INC.
Consulting Engineers
Rochester, Pennsylvania

Legend	
Property line	—————
Edge of pavement or roadway	———
Corporation line	—————
District line	—————
County line	—————
Original lot line	-----
Deed lot number	(15)
Parcel or index number	(29)
Improvement	○
Railroad	—+—+—+—

Revisions	
1	6-5-75 SC
2	11-27-78 Dg
3	REV. TO 7-1-83 NCS
4	Revised 6
5	July, 1986 TRL
6	Revised to 7-1-87 JH
7	REV TO 3-1-89 REB
8	OGIS 1/6/91 DSH
9	OGIS 3-19-92 TL
10	OGIS 2/1/93 DSH
11	OGIS 12/12/93 SAJ
12	OGIS 2-95 HD
13	O.G.I.S 4-1-96 J.E.B
14	SLS INC. 1/28/99 DSW
15	SLS INC. 3/03/00 JAW
16	ESI 2/2/01 REK
17	ESI 2/20/03 REK
18	6/27/11 SBH



TUCKER COUNTY
STATE OF WEST VIRGINIA
Office of Assessor

DISTRICT	DRY FORK
SHEET NO:	431
Date, Aerial Photography: Nov. 1961	Date, Map: Dec. 1962
Photo No:	Scale: 1" = 400'