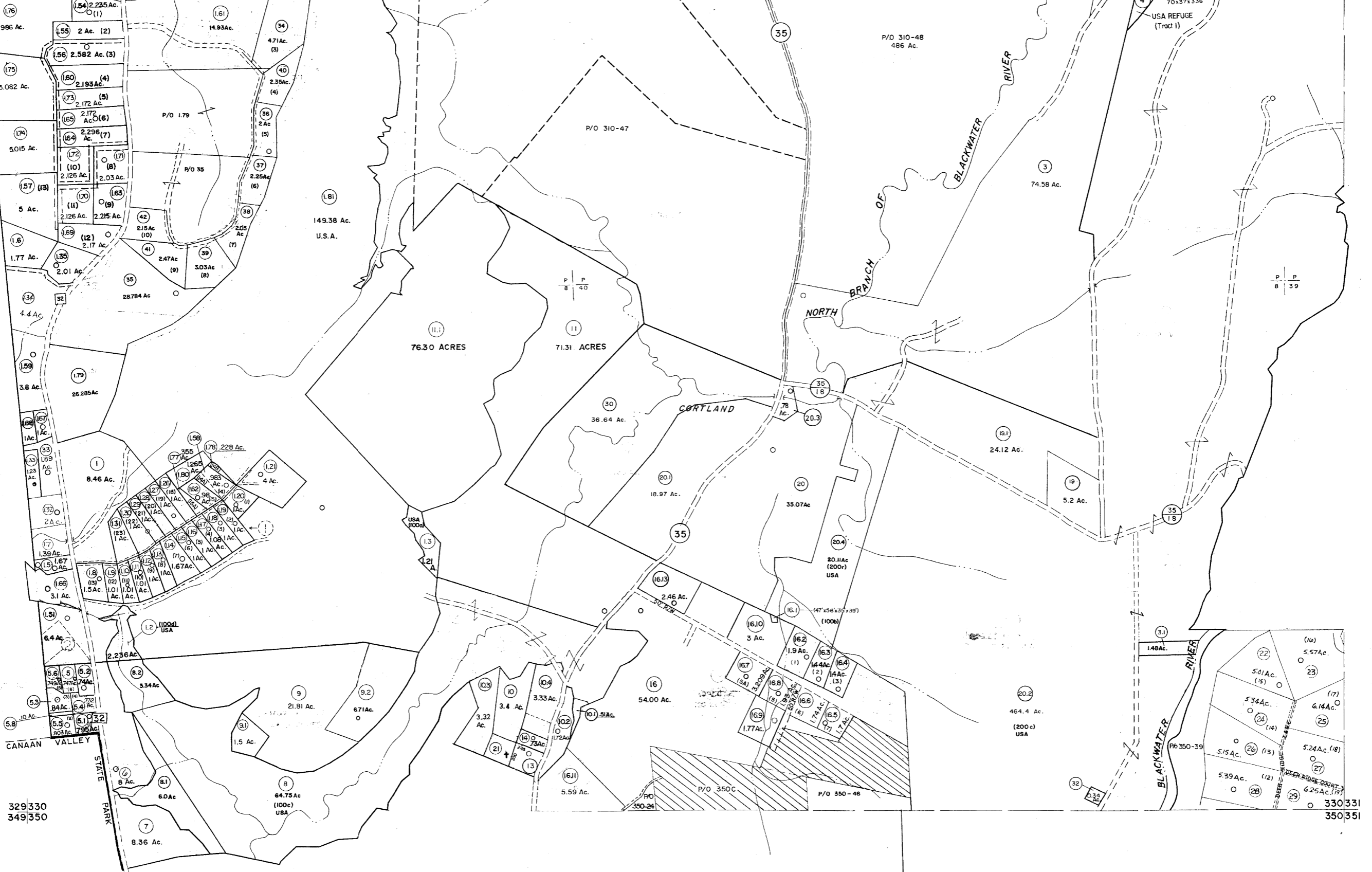


309310
329330

310311
330331



For Tax Purposes Only

Prepared by
MICHAEL BAKER, JR., INC.
Consulting Engineers
Rochester, Pennsylvania

Legend

Property line	—	Original lot line	—
Edge of pavement or roadway	—	Deed lot number	(15)
Corporation line	—	Parcel or index number	(27)
District line	—	Improvement	○
County line	—	Railroad	—

Revisions

1	6-3-64	9	REV. TO 3-1-89	R.E.B	17	SLS INC.	1/28/99	DSW
2	6-5-75	10	OGIS	1/5/91	DSH	18	SLS INC.	3/2/00
3	11-78	11	OGIS	3-19-92	TL	19	ESI	1/31/01
4	Revised to 7-1-85	12	OGIS	1/30/93	DSH	20	ESI	2/12/02
5	7-1-84	13	OGIS	12/12/93	SAJ	21	ESI	2/20/03
6	Revised to 7-1-85	14	OGIS	2-95	HD	22	HBS	2/19/04
7	July 1986	15	O.G.I.S	4-1-96	J.E.B	23	3/21/05	S.B.H
8	Revised to 7-1-85	16	SLS INC.	3/3/98	J.W.M	24	3/28/06	S.B.H

L-22-08 44.5
6-21-09 44.5
KEY MAP

310
329 330 331
350

TUCKER COUNTY
STATE OF WEST VIRGINIA
Office of Assessor

DISTRICT

DRY FORK

SHEET NO: 330

Date, Aerial Photography: November, 1961 Date, Map: Dec, 1962
Photo No: Scale: 1" = 400'