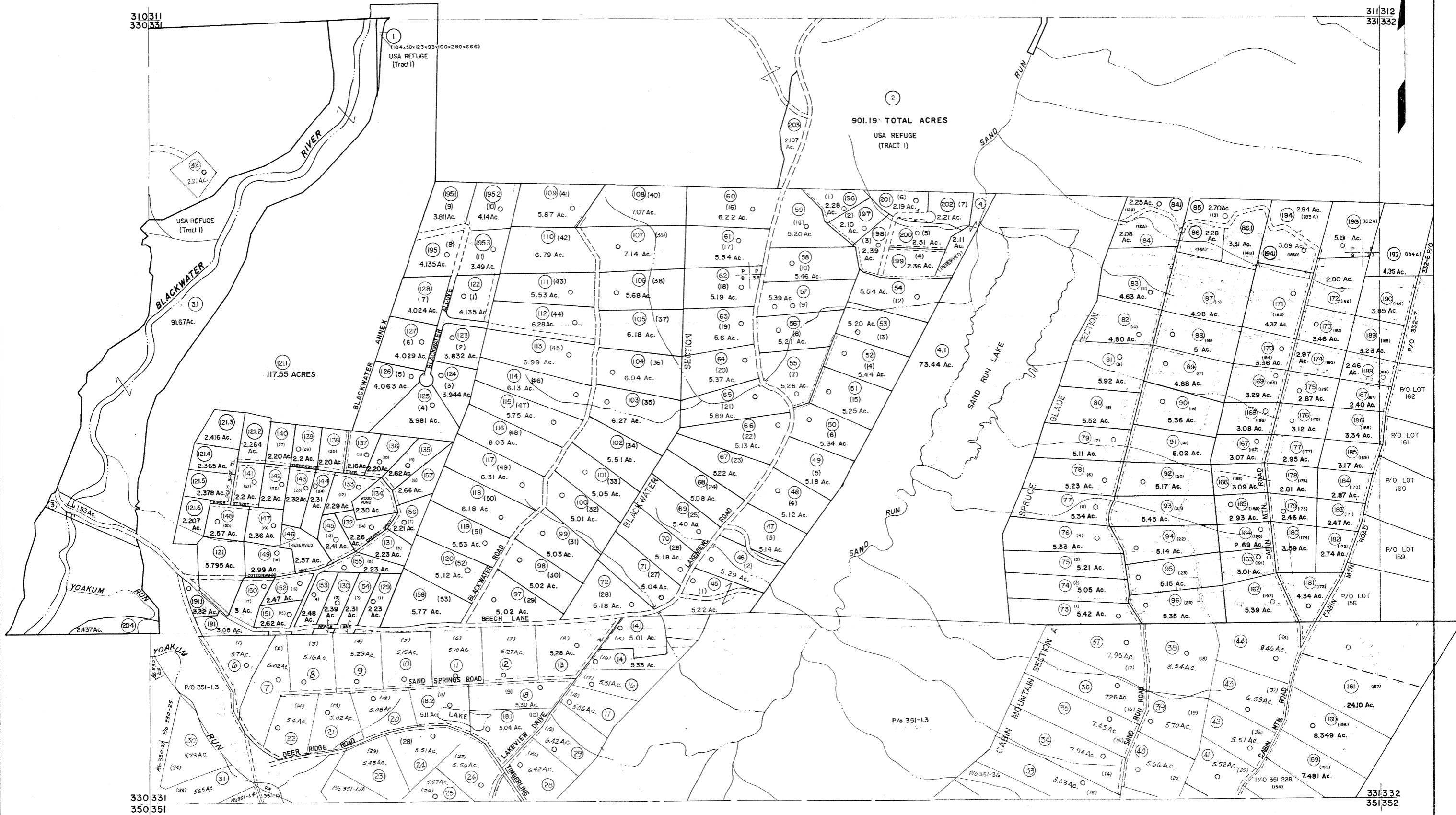


310311
330331

311312
331332



330331
350351

331332
351352

For Tax Purposes Only

Prepared by
MICHAEL BAKER, JR., INC.
Consulting Engineers
Rochester, Pennsylvania

Legend

Property line	Original lot line	Do not lot number	Parcel or index number
Edge of pavement or roadway	Improvement	Railroad	
Corporation line			
District line			
County line			

Revisions

1	11-20-78	9	OGIS 2-95	HD	17	ESI	2/12/02	REK
2	Revised to 7-1-84	10	O.G.I.S 4-1-96	J.E.B	18	ESI	2/20/03	REK
3	7-1-84	11	SLS INC. - DDC 5/97	L.E.S	19	HBS	2/19/04	
4	REV. TO 3-1-89	12	SLS INC. 3/3/88	J.W.M	20		3/21/05	S.B.H
5	OGIS 1/8/91	13	SLS INC. 1/28/99	D.S.W	21		3/24/07	S.B.H
6	OGIS 3-19-92	14	SLS INC. 3/2/00	J.W.M	22		6-22-08	4.5
7	OGIS 1/30/93	15	ESI 2/1/01	REK	23			
8	OGIS 12/12/93	16			24			

KEY MAP



TUCKER COUNTY
STATE OF WEST VIRGINIA
Office of Assessor

DISTRICT

DRY FORK

SHEET NO: 331

Date, Aerial Photography: November, 1961 Date, Map: Dec, 1962
Photo No: Scale: 1" = 400'