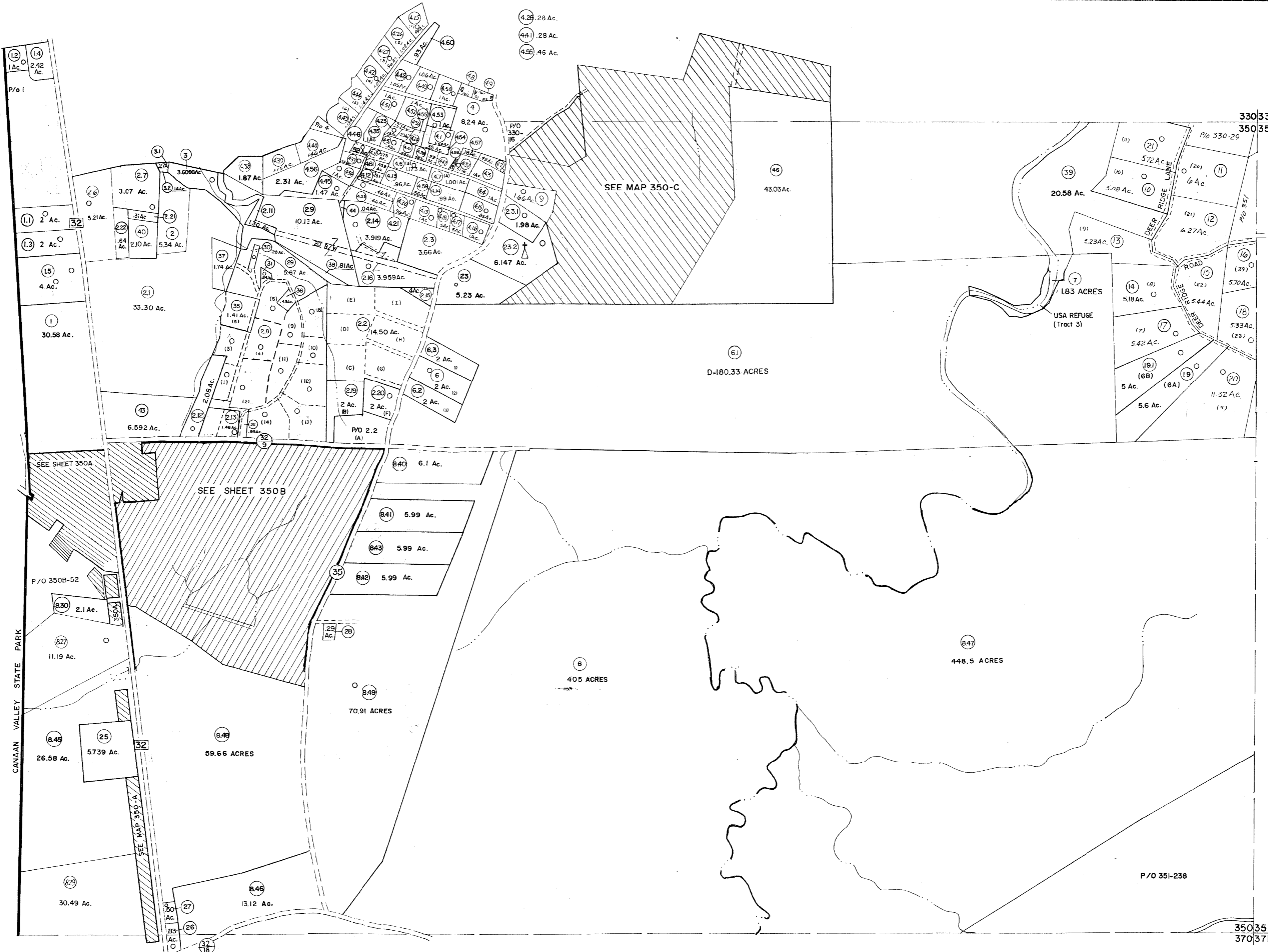


329|330  
349|350

330|331  
350|351

349|350  
369|370

350|351  
370|371



For Tax Purposes Only

Prepared by  
MICHAEL BAKER, JR., INC.  
Consulting Engineers  
Rochester, Pennsylvania

Legend

Property line	—	Original lot line	- - - - -
Edge of pavement or roadway	—	Deed lot number	(15)
Corporation line	—	Parcel or index number	(99)
District line	—	Improvement	o
County line	—	Railroad	—

Revisions

1	6-5-75	J.C.	9	OGIS	1/5/91	DSH	17	SLS INC.	1/28/99	DSW
2	11-26-78	B.A.H.	10	OGIS	3-19-92	TL	18	SLS INC.	3/2/00	JWM
3	Revised to 1-1-85		11	OGIS	1/31/93	DSH	19	ESI	2/1/01	REK
4	7-1-84	L.E.S.	12	OGIS	12/12/93	SAJ	20	ESI	2/12/02	REK
5	Revised to 7-1-85	TR	13	OGIS	4-95	HD	21	H&S	2/19/04	
6	July, 1986	TRL	14	O.G.I.S.	4-1-96	J.E.B.	22	3/21/05	S&H	
7	Revised to 7-1-85		15	SLS INC.	DDC 5/97		23	6-22-08	4.5	
8	Revised to 3-1-89	R.F.B.	16	SLS INC.	3/3/98	JWM	24	6-21-09	4.5	

KEY MAP

330  
349 350 351  
370

TUCKER COUNTY  
STATE OF WEST VIRGINIA  
Office of Assessor

DISTRICT

DRY FORK

SHEET NO: 350

Date, Aerial Photography: November, 1961 Date, Map: Dec, 1962  
Photo No: Scale: 1" = 400'