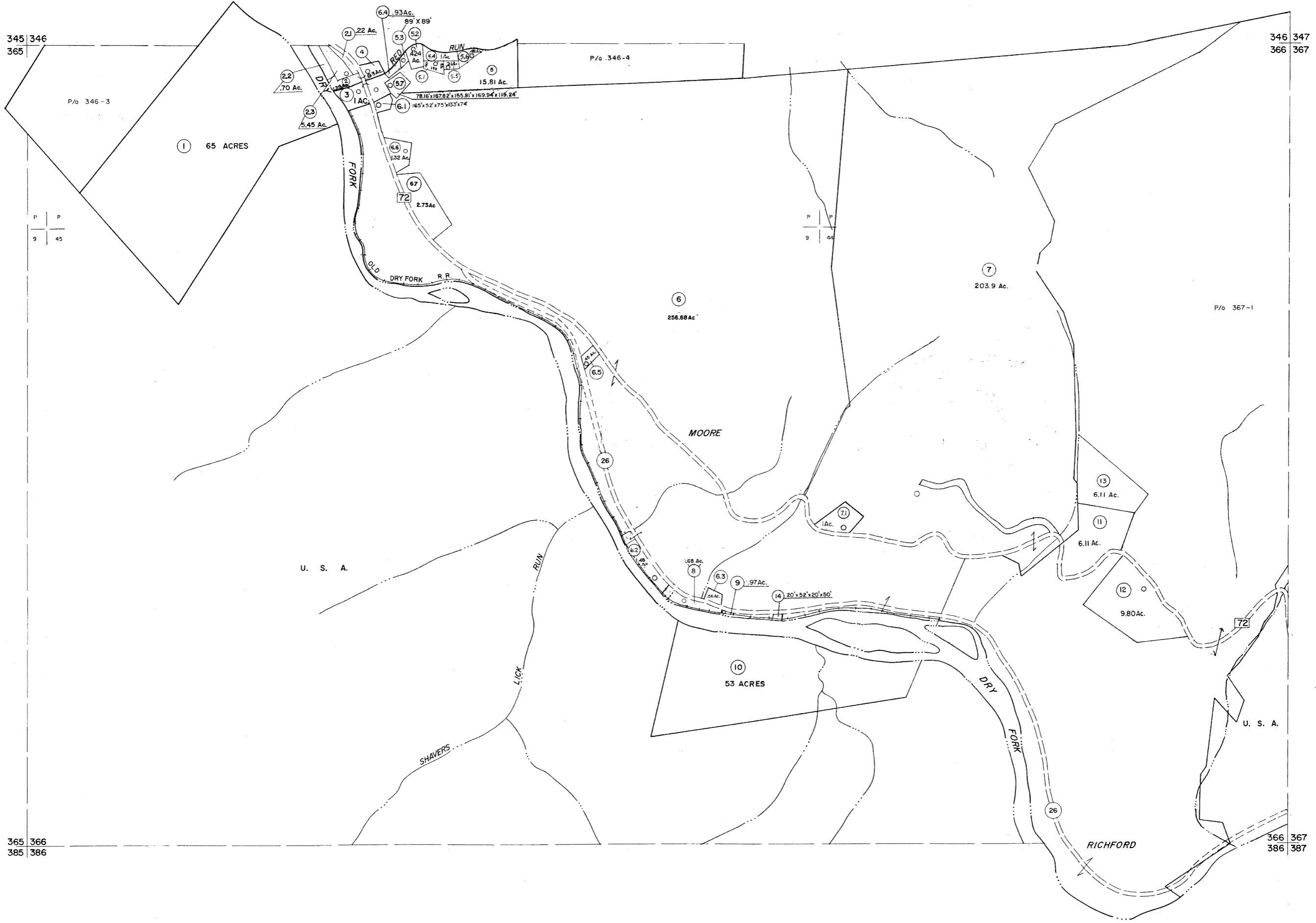


345 346
365

346 347
366 367

365 366
385 386

366 367
386 387



For Tax Purposes Only

Prepared by
MICHAEL BAKER, JR., INC.
Consulting Engineers
Rochester, Pennsylvania

Legend

Property line	—————	Original lot line	-----
Edge of pavement or roadway	-----	Deed lot number	(15)
Corporation line	-----	Parcel or index number	(2)
District line	-----	Improvement	o
County line	-----	Railroad	—+—+—+—

Revisions

1	6-6-75	BH	9	OGIS	1/31/93	DSH	17	3/28/06	S&H
2	11/22/78	OG	10	OGIS	12/12/93	SAJ	18	3/24/07	S&H
3	Revised to 7-1-85	OG	11	SLS INC.	3/3/98	JWM	19	6-22-08	††45
4	7-1-84	L.E.S.	12	SLS INC.	1/28/99	DSW	20		
5	July 1985	TRZ	13	SLS INC.	3/2/00	JWM	21		
6	Rev. to 3-1-89	REB	14	ESI	2/2/01	REK	22		
7	OGIS	1/6/91	DSH	15	H&S	2/19/04	23		
8			16		3/21/05	S&H	24		

KEY MAP



TUCKER COUNTY
STATE OF WEST VIRGINIA
Office of Assessor

DISTRICT

DRY FORK

SHEET NO: 366

Date, Aerial Photography: November, 1961 Date, Map: Dec., 1962
Photo No: Scale: 1" = 400'