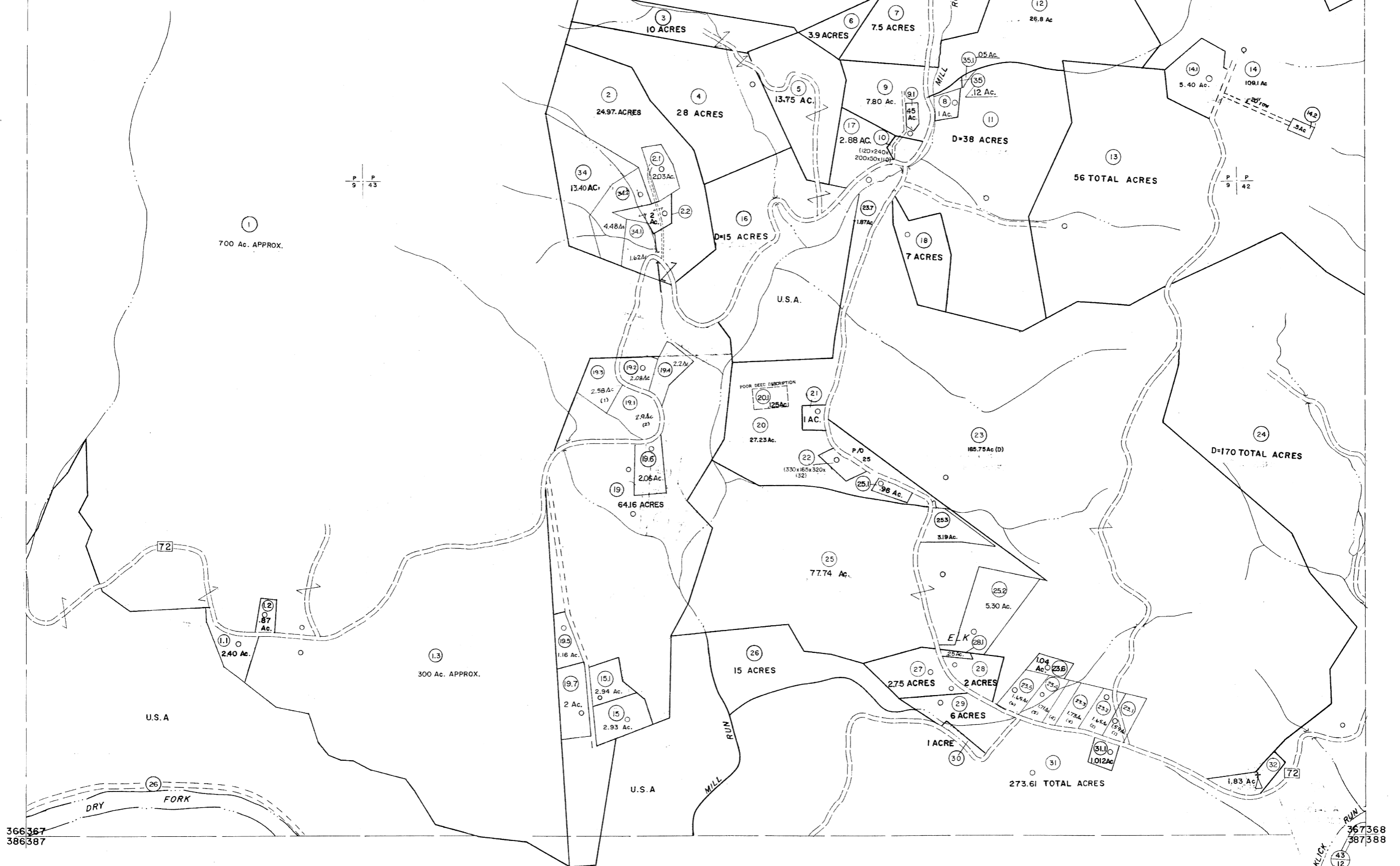


346347
366367

347348
367368



366367
386387

367368
387388

For Tax Purposes Only

Prepared by
MICHAEL BAKER, JR., INC.
Consulting Engineers
Rochester, Pennsylvania

Legend	
Property line	Original lot line
Edge of pavement or roadway	Dead lot number (15)
Corporation line	Parcel or index number (16)
District line	Improvement
County line	Railroad

Revisions			
1	6-3-62	9	OGIS 1/31/93 DSH
2	11-22-78	10	OGIS 2-95 HD
3	Revised to 7-1-88	11	0.61.S 4-1-96 J.E.B
4	7-1-84	12	SLS INC. DDC 5/97
5	July, 1986	13	SLS INC. 1/28/99 DSW
6	Rev. to 3-1-89	14	SLS INC. 3/2/00 JWM
7	OGIS 1/6/91	15	ESI 2/12/02 REK
8		16	



TUCKER COUNTY
STATE OF WEST VIRGINIA
Office of Assessor

DISTRICT
DRY FORK

SHEET NO: 367

Date, Aerial Photography: November, 1961 Date, Map: Dec., 1962
Photo No: Scale: 1"=400'