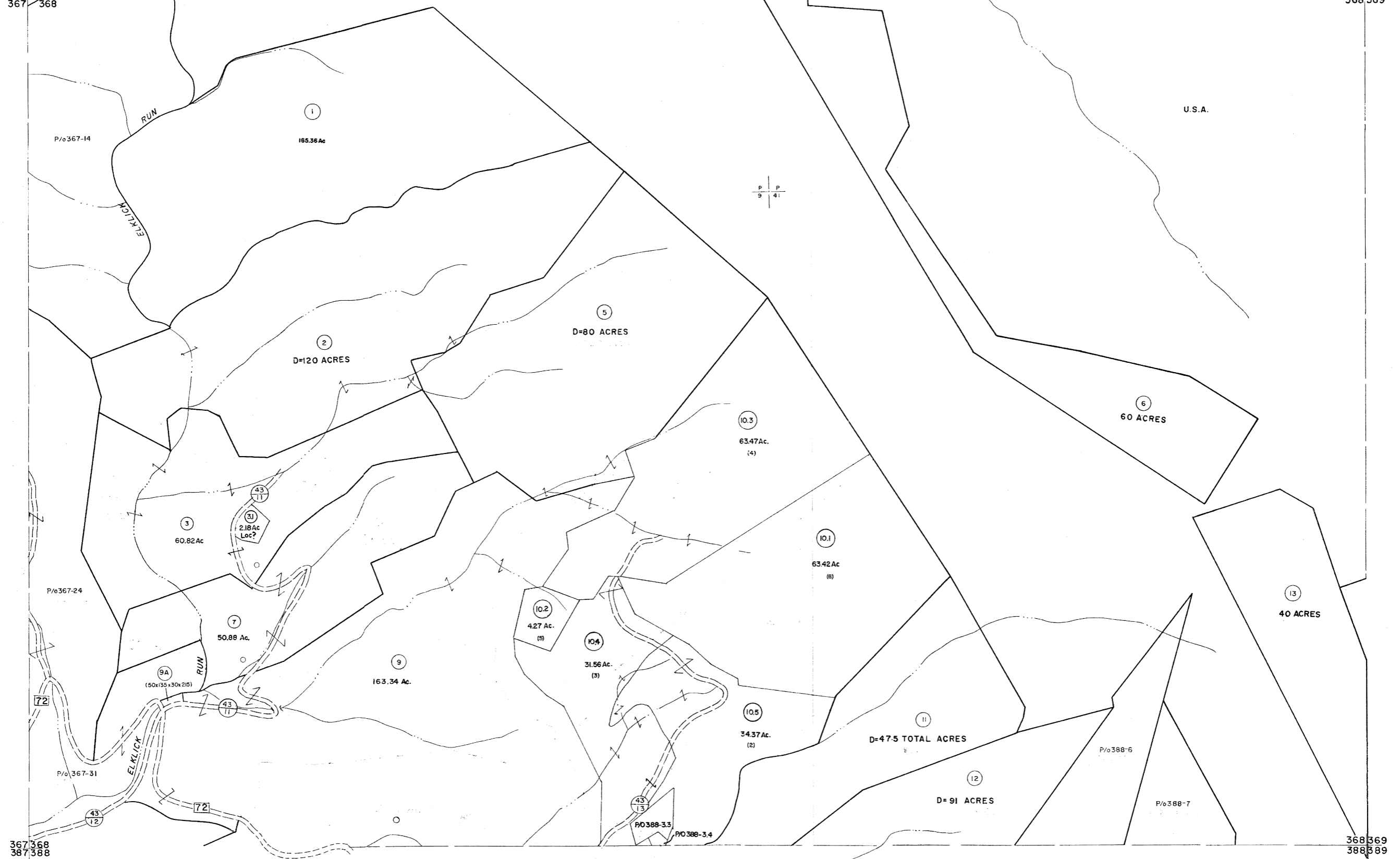


347 348
367 368

348 349
368 369



For Tax Purposes Only

Prepared by
MICHAEL BAKER, JR., INC.
Consulting Engineers
Rochester, Pennsylvania

Legend

Property line	—	Original lot line	---
Edge of pavement or roadway	---	Deed lot number	(15)
Corporation line	---	Parcel or index number	(12)
District line	---	Improvement	o
County line	---	Railroad	o

Revisions

1	11/22/76	OG	9	SLS INC. 3/2/00	JWM	17
2	Revision # 7-1-83		10	6-22-68	HAJ	18
3	July 1985		11	6-21-09	HAJ	19
4	OGIS 1/6/91	DSH	12			20
5	OGIS 12/12/93	SAJ	13			21
6	OGIS 2-95	HD	14			22
7	O.G.I.S. 4-1-96	J.E.B.	15			23
8	SLS INC. - DDC 5/97		16			24

KEY MAP



TUCKER COUNTY
STATE OF WEST VIRGINIA
Office of Assessor

DISTRICT

DRY FORK

SHEET NO: 368

Date, Aerial Photography: November, 1961 Date, Map: Dec., 1962
Photo No: Scale: 1" = 400'