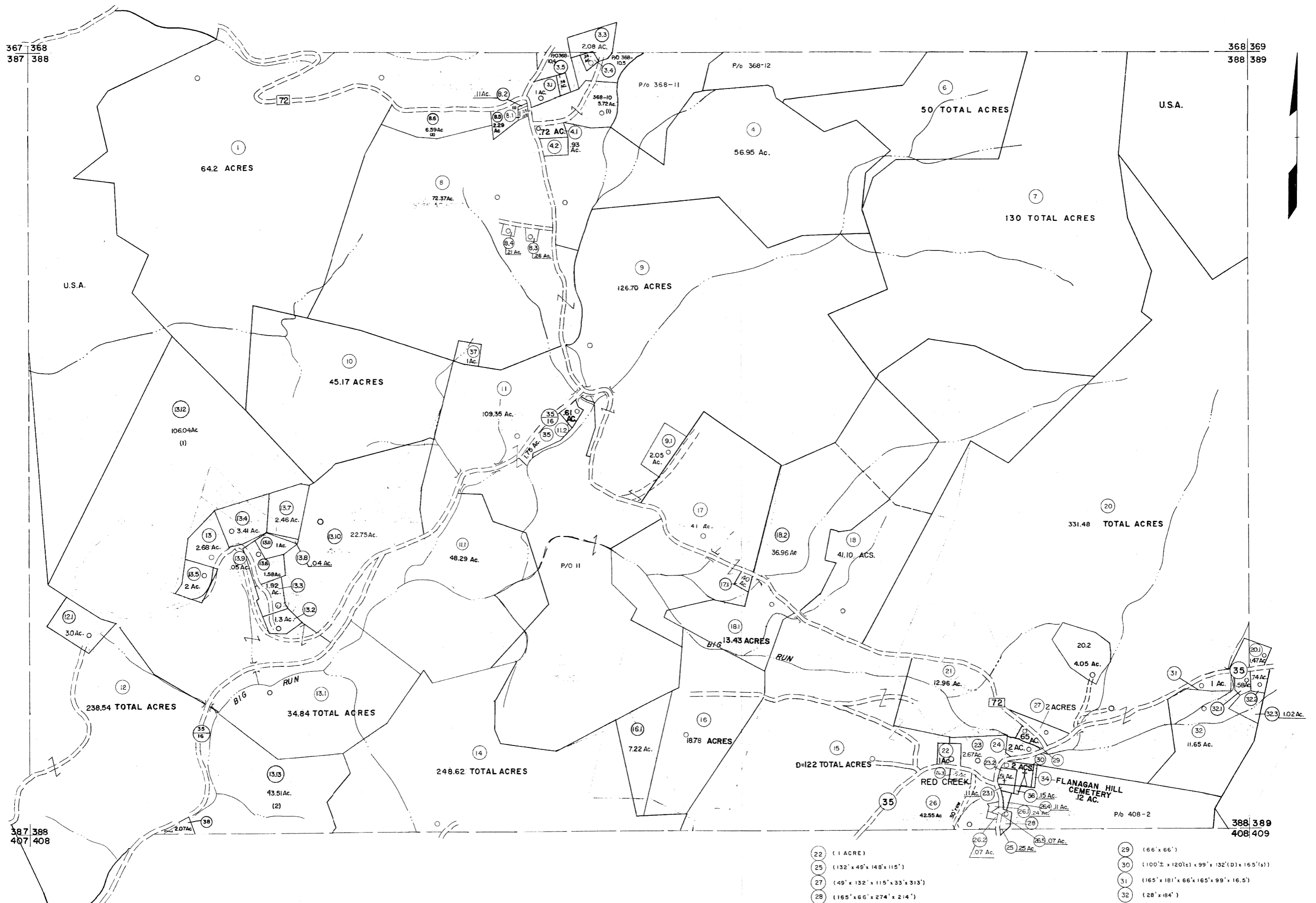


367 368  
387 388

368 369  
388 389



387 388  
407 408

388 389  
408 409

- 22 (1 ACRE)
- 25 (132' x 49' x 148' x 115')
- 27 (49' x 132' x 115' x 33' x 313')
- 28 (165' x 66' x 274' x 214')
- 29 (66' x 66')
- 30 (100' x 120' x 99' x 132' (D) x 165' (S))
- 31 (165' x 181' x 66' x 165' x 99' x 16.5')
- 32 (28' x 184')

For Tax Purposes Only

Prepared by  
MICHAEL BAKER, JR., INC.  
Consulting Engineers  
Rochester, Pennsylvania

Legend	
Property line	Original lot line
Edge of pavement or roadway	Dead lot number
Corporation line	Parcel or index number
District line	Improvement
County line	Railroad

Revisions			
1	10-3-68	9	Rev. to 3-1-89 R.E.B.
2	6-3-68	10	OGIS 1/6/91 DSH
3	11-27-78	11	OGIS 3-19-92 T.L.
4	REV. TO 7-1-83	12	OGIS 2/1/93 DSH
5	7-1-84	13	OGIS 12/12/93 SAJ
6	REV. TO 7-1-85	14	OGIS 2-95 H.D.
7	July, 1986	15	O.G.I.S. 4-1-98 J.E.B.
8	Revised to 7-1-87	16	SLS INC. - DDC 5/97
17	SLS INC. 3/4/98 J.W.M.	18	SLS INC. 1/28/99 DSW
19	SLS INC. 2/21/00 JAW	20	ESI 2/2/01 REK
21	ESI 2/20/02 REK	22	3/21/05 S.B.H.
23	3/28/06 S.B.H.	24	3/24/07 S.B.H.

6-11-08 445  
6-21-09 1145

KEY MAP

368  
387 388 389  
408

TUCKER COUNTY  
STATE OF WEST VIRGINIA  
Office of Assessor

DISTRICT  
DRY FORK

SHEET NO: 388

Date, Aerial Photography: Nov. 1961  
Photo No:

Date, Map: Dec. 1962  
Scale: 1" = 400'