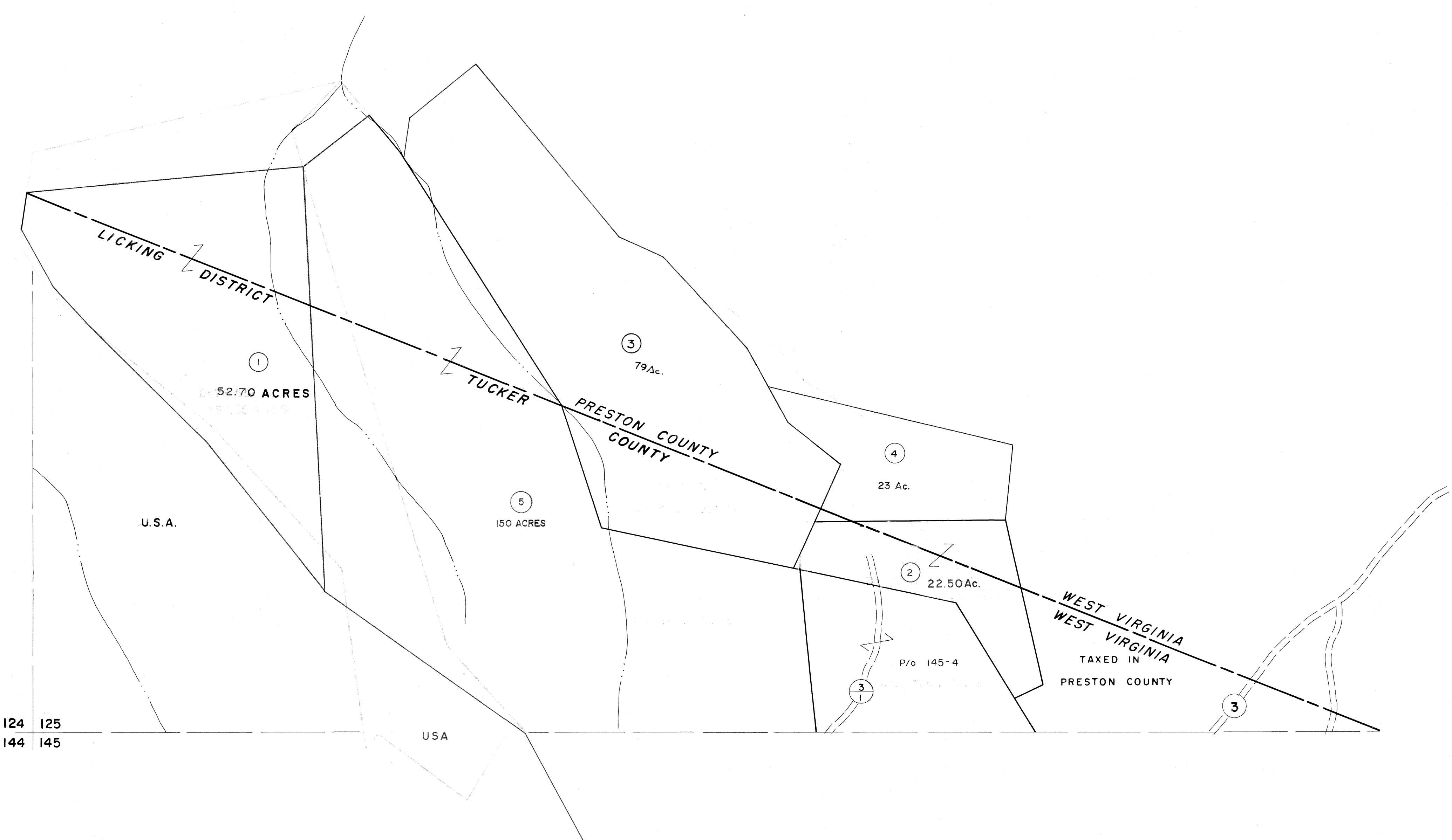


124 | 125

125 |



124 | 125
144 | 145

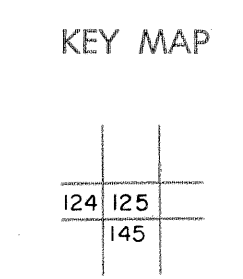
125 |
145 | 146

For Tax Purposes Only

Prepared by
MICHAEL BAKER, JR., INC.
Consulting Engineers
Rochester, Pennsylvania

| Legend | |
|-----------------------------|------------------------|
| Property line | Original lot line |
| Edge of pavement or roadway | Dead lot number |
| Corporation line | Parcel or index number |
| District line | Improvement |
| County line | Railroad |

| Revisions | |
|-----------|----------------------------------|
| 1 | 11/14/78 DGL SLS INC. - DDC 5/97 |
| 2 | Revised to 7-1-84 L.E.S. |
| 3 | 7-1-84 L.E.S. |
| 4 | Revised to 7-1-84 L.E.S. |
| 5 | OGIS 12/29/90 DSH |
| 6 | OGIS 1/23/93 DSH |
| 7 | OGIS 12/9/93 SAJ |
| 8 | |



TUCKER COUNTY
STATE OF WEST VIRGINIA
Office of Assessor

| | |
|--|----------------------|
| DISTRICT | LICKING |
| SHEET NO: 125 | |
| Date, Aerial Photography: November, 1961 | Date, Map: Dec, 1962 |
| Photo No: | Scale: 1" = 400' |