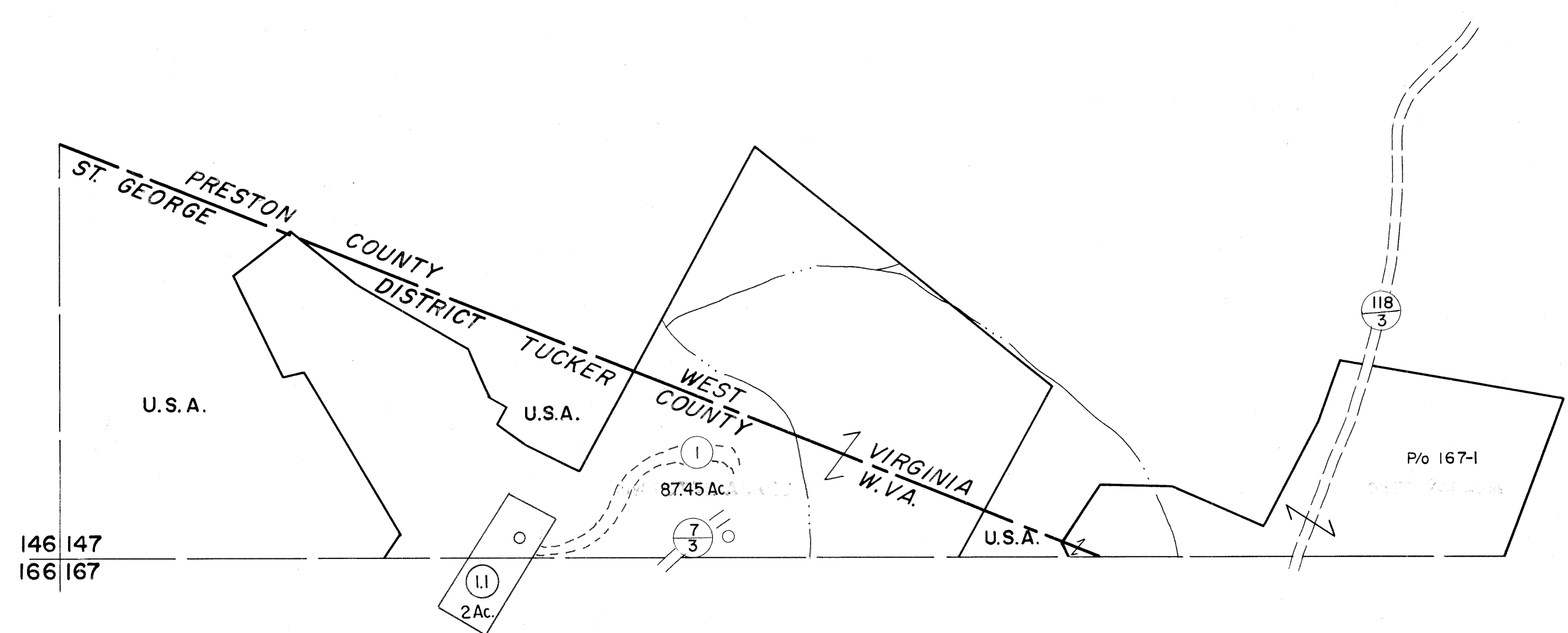


146|147

147



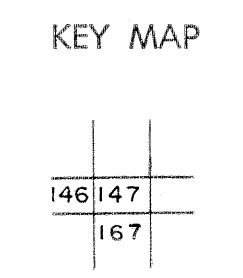
146 147
166 167

147
167 168

For Tax Purposes Only
 Prepared by
MICHAEL BAKER, JR., INC.
 Consulting Engineers
 Rochester, Pennsylvania

| Legend | |
|-----------------------------|------------------------|
| Property line | Original lot line |
| Edge of pavement or roadway | Deed lot number |
| Corporation line | Parcel or index number |
| District line | Improvement |
| County line | Railroad |

| Revisions | |
|-----------|--------------------|
| 1 | 11/16/78 DG |
| 2 | Revision 7-1-83 DF |
| 3 | OGIS 12/30/90 DSH |
| 4 | HBS 2/22/04 |
| 5 | |
| 6 | |
| 7 | |
| 8 | |



TUCKER COUNTY
 STATE OF WEST VIRGINIA
 Office of Assessor

DISTRICT **ST. GEORGE**
SHEET NO: 147
 Date, Aerial Photography: November, 1961 Date, Map: Dec, 1962
 Photo No: Scale: 1" = 400'