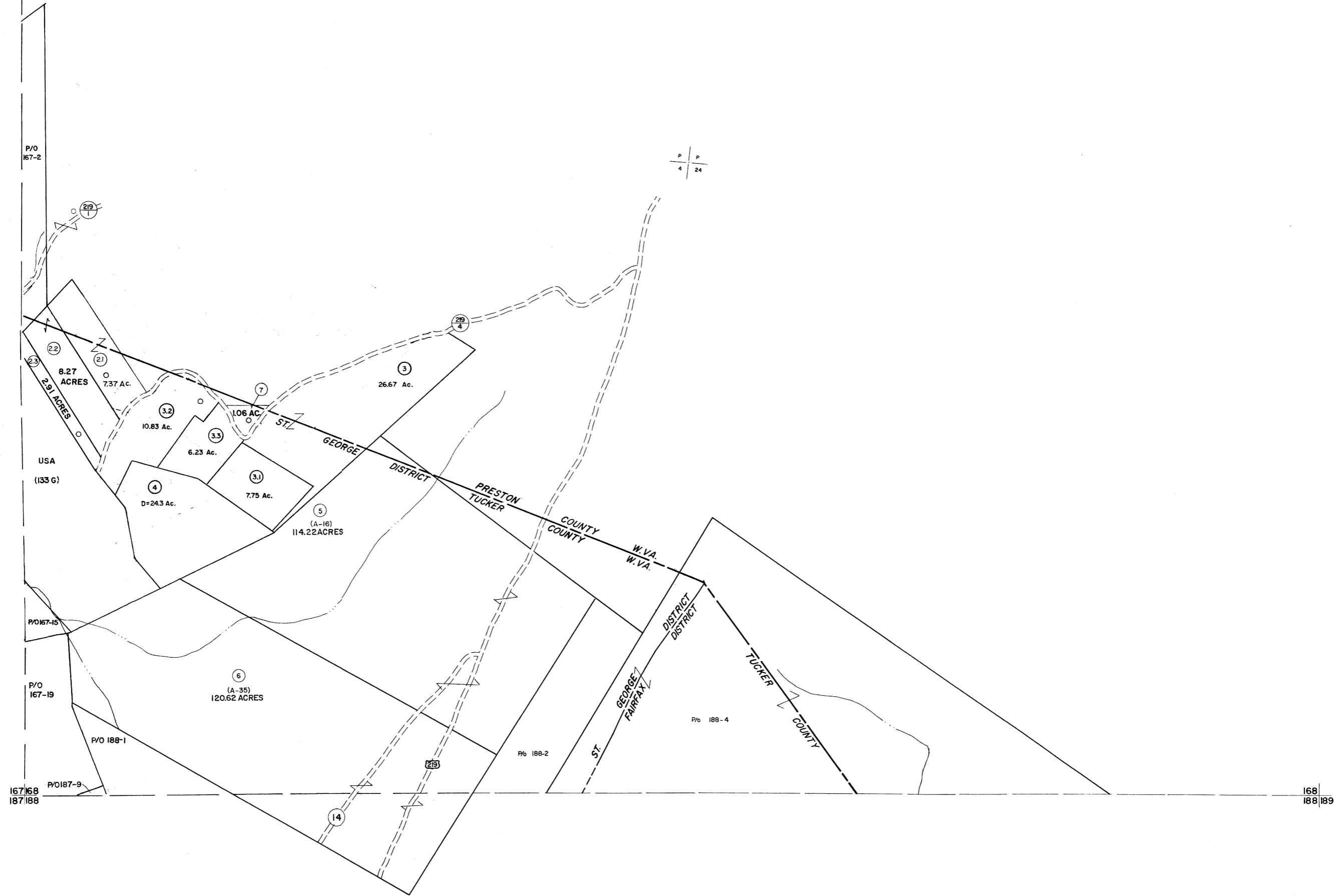


147
167|168

168



P
4
P
24

P/O
167-2

P/O167-15

P/O
167-19

167|168
167|188

P/O 188-1

P/O187-9

P/O 188-2

P/O 188-4

168
188|189

For Tax Purposes Only

Prepared by
MICHAEL BAKER, JR., INC.
Consulting Engineers
Rochester, Pennsylvania

Legend

| | | | |
|-----------------------------|-------|------------------------|-----------|
| Property line | ————— | Original lot line | - - - - - |
| Edge of pavement or roadway | ————— | Dead lot number | (15) |
| Corporation line | ————— | Parcel or index number | (99) |
| District line | ————— | Improvement | o |
| County line | ————— | Railroad | + |

Revisions

| | | | | | | |
|---|-------------------|-------|----|---------|------|----|
| 1 | 11/17/78 | D.G. | 9 | 3/26/07 | S&H | 17 |
| 2 | REVISED TO 7-1-83 | | 10 | 5-8-10 | H-45 | 18 |
| 3 | REV. TO 7-1-86 | NCS | 11 | | | 19 |
| 4 | REV. TO 3-1-89 | NCS | 12 | | | 20 |
| 5 | OGIS 12/30/90 | DSH | 13 | | | 21 |
| 6 | OGIS 3-19-92 | TL | 14 | | | 22 |
| 7 | OGIS 1/24/93 | DSH | 15 | | | 23 |
| 8 | O.G.I.S 4-1-98 | J.E.B | 16 | | | 24 |

KEY MAP



TUCKER COUNTY
STATE OF WEST VIRGINIA
Office of Assessor

DISTRICT **ST. GEORGE FAIRFAX**

SHEET NO: 168

Date, Aerial Photography: November, 1961 Date, Map: Dec. 1962
Photo No: Scale: 1" = 400'