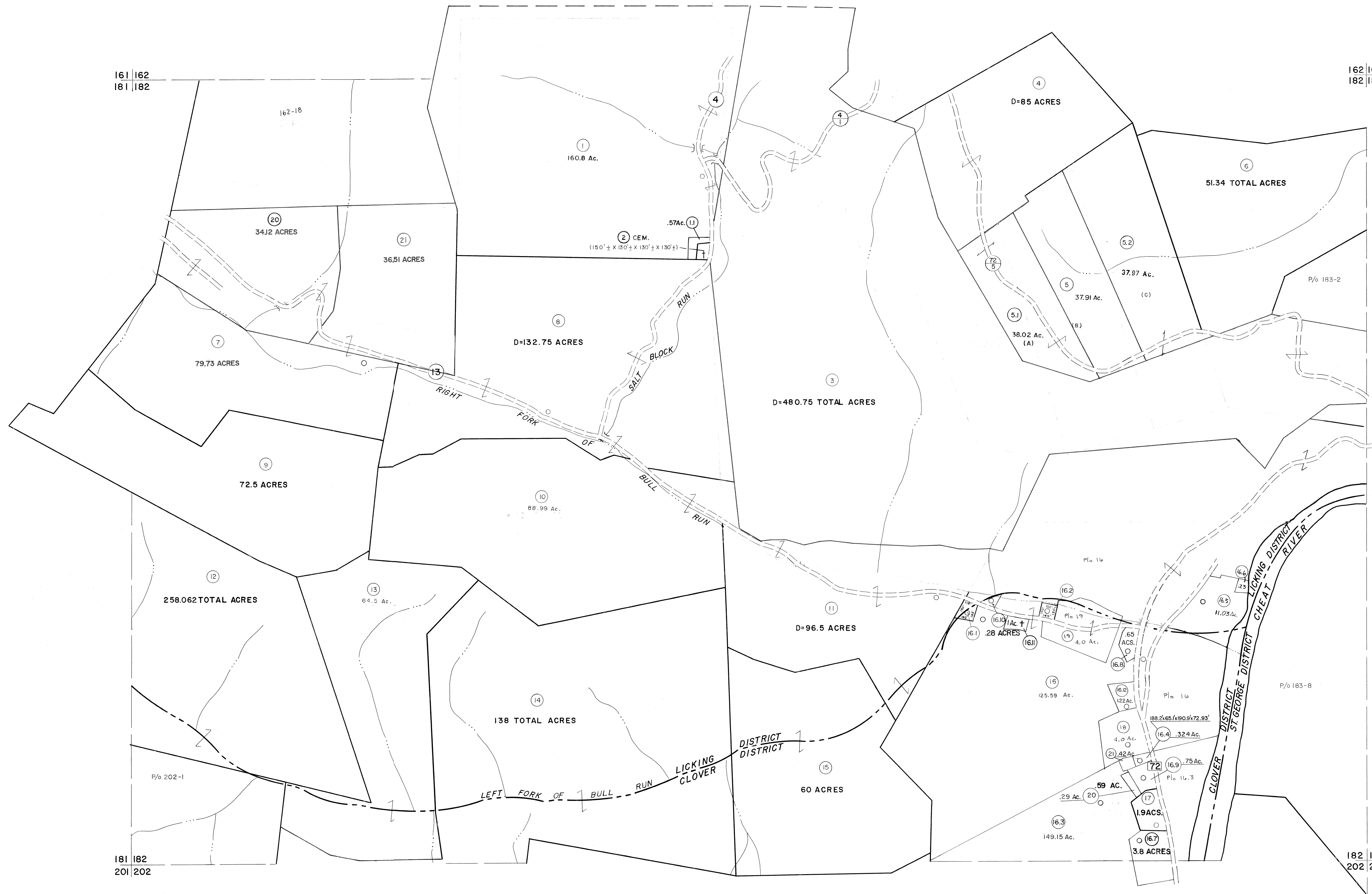


161 | 162  
181 | 182

162 | 163  
182 | 183



181 | 182  
201 | 202

182 | 183  
202 | 203

For Tax Purposes Only

Prepared by  
MICHAEL BAKER, JR., INC.  
Consulting Engineers  
Rochester, Pennsylvania

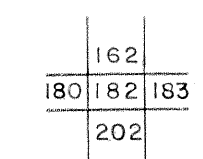
Legend

Property line	—	Original lot line	—
Edge of pavement or roadway	—	Deed lot number	(15)
Corporation line	—	Parcel or index number	(22)
District line	—	Improvement	o
County line	—	Railroad	—

Revisions

1	6-6-75	J.C.	9	O.G.I.S.	4-1-96	J.E.B.	17	3/26/07	S&H
2	11-20-78	D.G.	10	SLS INC.	3/1/00	J.W.M.	18		
3	REVISED TO 7-1-83		11	ESI	1/31/01	REK	19		
4	7-1-84	L.E.S.	12	ESI	2/7/02	REK	20		
5	REV. TO 7-1-85	NCS	13	HBS	2/22/04		21		
6	REV. TO 3-1-89	NCS	14		3/21/05	S&H	22		
7	OGIS 3-19-92	TL	15		3/28/06	S&H	23		
8	OGIS 12/11/93	SAJ	16				24		

KEY MAP



TUCKER COUNTY  
STATE OF WEST VIRGINIA  
Office of Assessor

DISTRICT LICKING CLOVER ST. GEORGE

SHEET NO: 182

Date, Aerial Photography: Nov., 1961 Date, Map: Dec., 1962  
Photo No: Scale: 1" = 400'