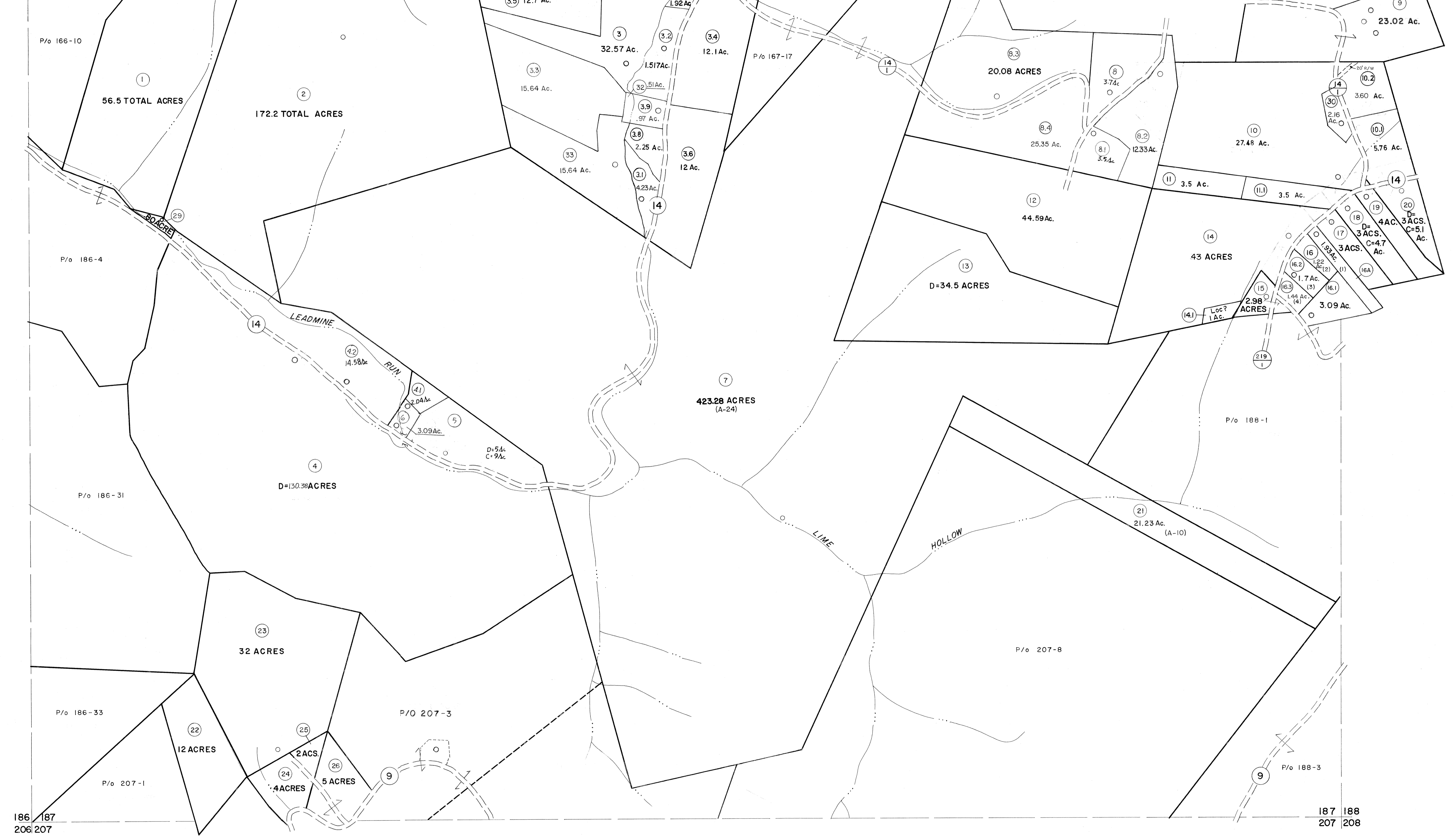


166 167  
186 187

167 168  
187 188



186 187  
206 207

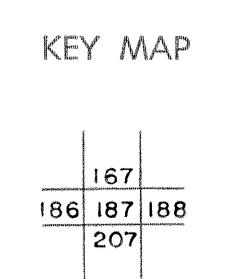
187 188  
207 208

For Tax Purposes Only

Prepared by  
MICHAEL BAKER, JR., INC.  
Consulting Engineers  
Rochester, Pennsylvania

Legend	
Property line	—
Edge of pavement or roadway	—
Corporation line	—
District line	—
County line	—
Original lot line	---
Deed lot number	(15)
Parcel or index number	(99)
Improvement	o
Railroad	—

Revisions	
1	10-3-63 B.H.
2	11-20-72 D.A.
3	To 7-1-83
4	7-1-84 L.E.S.
5	Revised to 7-1-85
6	REV TO 7-1-86 NCS
7	Revised to 7-1-87
8	REV TO 3-1-89 NCS
9	OGIS 12/30/90 DSH
10	OGIS 3-19-92 TL
11	OGIS 12/11/93 SAJ
12	OGIS 2-95 HD
13	O.G.I.S. 4-1-96 J.E.B.
14	SLS INC. - DDC 5/97
15	SLS INC. 2/19/98 DSW
16	SLS INC. 1/27/99 DSW
17	ESI 1/31/01 REK
18	ESI 2/7/02 REK
19	ESI 2/20/03 REK
20	H&S 2/22/04
21	3/28/06 S&H
22	3/24/07 S&H
23	
24	



TUCKER COUNTY  
STATE OF WEST VIRGINIA  
Office of Assessor

DISTRICT  
ST. GEORGE

SHEET NO: 187

Date, Aerial Photography: Nov, 1961 Date, Map: Dec, 1962  
Photo No: Scale: 1" = 400'