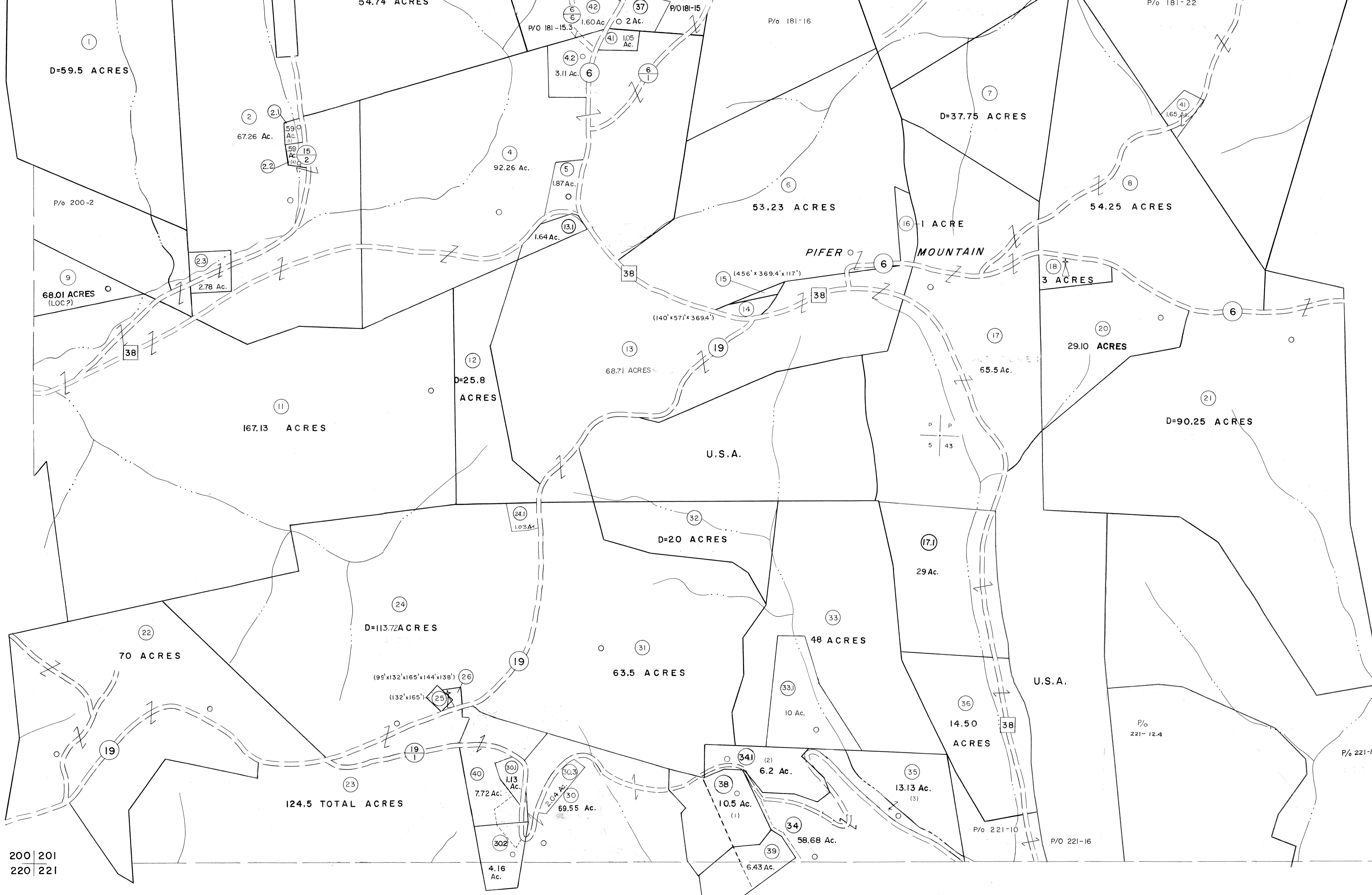


180 | 181
200 | 201

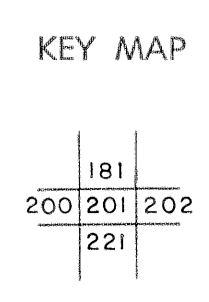
181 | 182
201 | 202



For Tax Purposes Only
Prepared by
MICHAEL BAKER, JR., INC.
Consulting Engineers
Rochester, Pennsylvania

Legend	
Property line	—
Edge of pavement or roadway	—
Corporation line	—
District line	—
County line	—
Original lot line	—
Deed lot number	(13)
Parcel or index number	(99)
Improvement	○
Railroad	—

Revisions						
1	6-3-07	9	OGIS 1/25/93	DSH	3/21/05	SBH
2	6-3-75	10	OGIS 12/11/93	SAJ	3/24/07	SBH
3	11-20-78	11	OGIS 2-95	HD		
4	11-19-88	12	SLS INC. - DDC 5/97			
5	12-1-85	13	SLS INC. 2/23/98	JWM		
6	REV. TO 7-1-86	14	SLS INC. 1/27/99	DSW		
7	OGIS 12/31/90	15	ESI 1/31/01	REK		
8	OGIS 3-19-92	16	H&S 2/22/04			



TUCKER COUNTY
STATE OF WEST VIRGINIA
Office of Assessor

DISTRICT	CLOVER
SHEET NO:	201
Date, Aerial Photography: Nov., 1961	Date, Map: Dec., 1962
Photo No:	Scale: 1"=400'