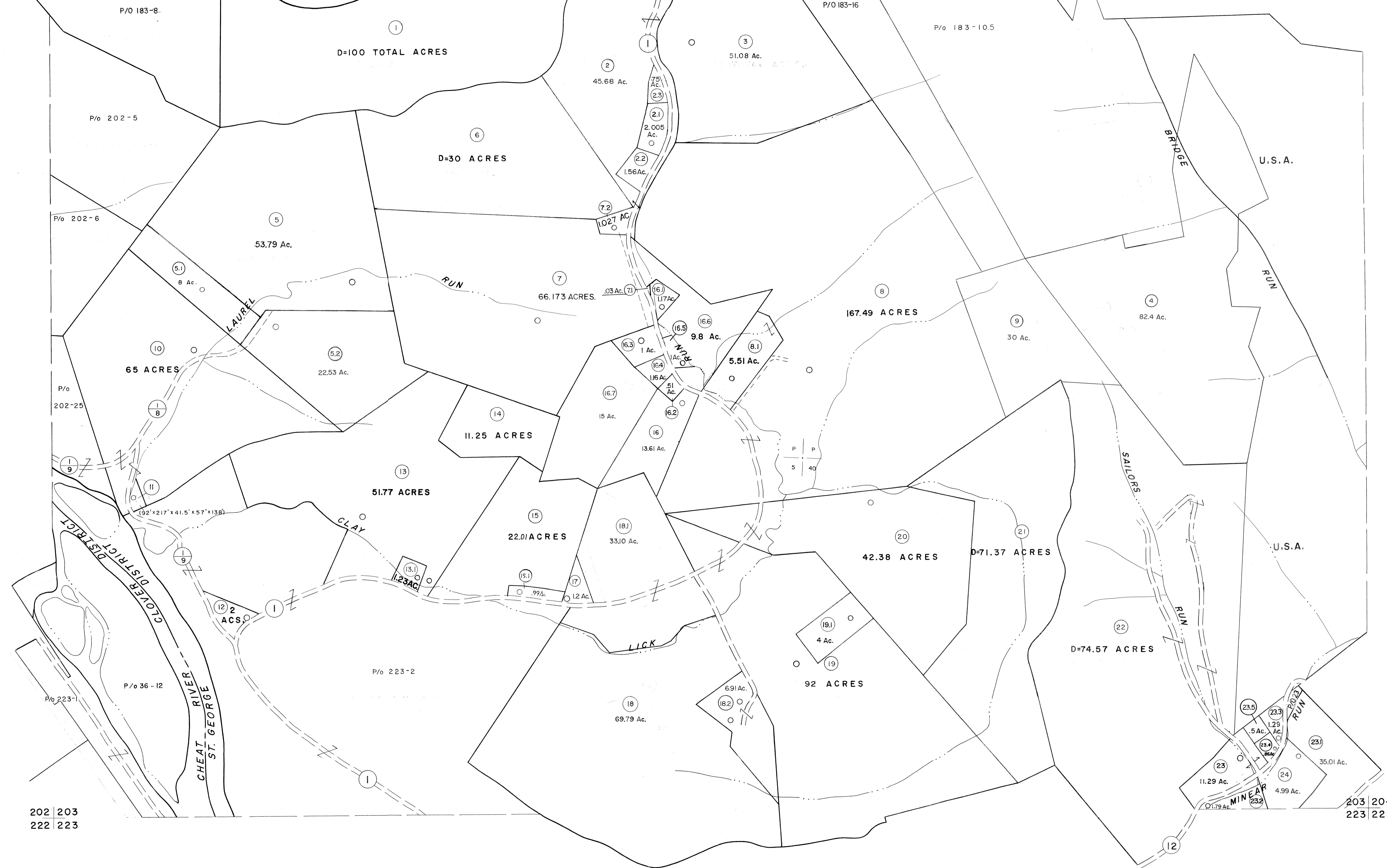


182 | 183
202 | 203

183 | 184
203 | 204



For Tax Purposes Only

Prepared by
MICHAEL BAKER, JR., INC.
Consulting Engineers
Rochester, Pennsylvania

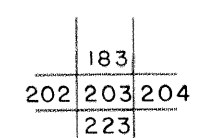
Legend

Property line	—	Original lot line	---
Edge of pavement or roadway	—	Deed lot number	(15)
Corporation line	---	Parcel or index number	(99)
District line	---	Improvement	o
County line	---	Railroad	+

Revisions

1	11/20/78	D.G.	9	OGIS	3-19-91	TL	17	SLS INC.	3/1/00	JWM
2	1/21/83	L.E.S.	10	OGIS	1/25/93	DSH	18	ES1	2/7/02	REK
3	7/21/84	L.E.S.	11	OGIS	12/11/93	SAJ	19	ES1	2/20/03	REK
4	Revised to 7-1-85		12	OGIS	2-95	HD	20	HBS	2/22/04	
5	REV TO 7-1-86	NCS	13	O.G.I.S.	4-1-96	J.E.B	21	3/28/06		S & H
6	Revised to 7-1-87		14	SLS INC.	-DDC	5/97	22	3/24/07		S & H
7	REV. TO 3-1-89	R.E.B.	15	SLS INC.	2/23/98	JWM	23			
8	OGIS	12/31/90	16	SLS INC.	1/27/99	DSW	24			

KEY MAP



TUCKER COUNTY
STATE OF WEST VIRGINIA
Office of Assessor

DISTRICT
CLOVER-ST. GEORGE

SHEET NO: 203

Date, Aerial Photography: Nov., 1961 Date, Map: Dec., 1962
Photo No: Scale: 1" = 400'