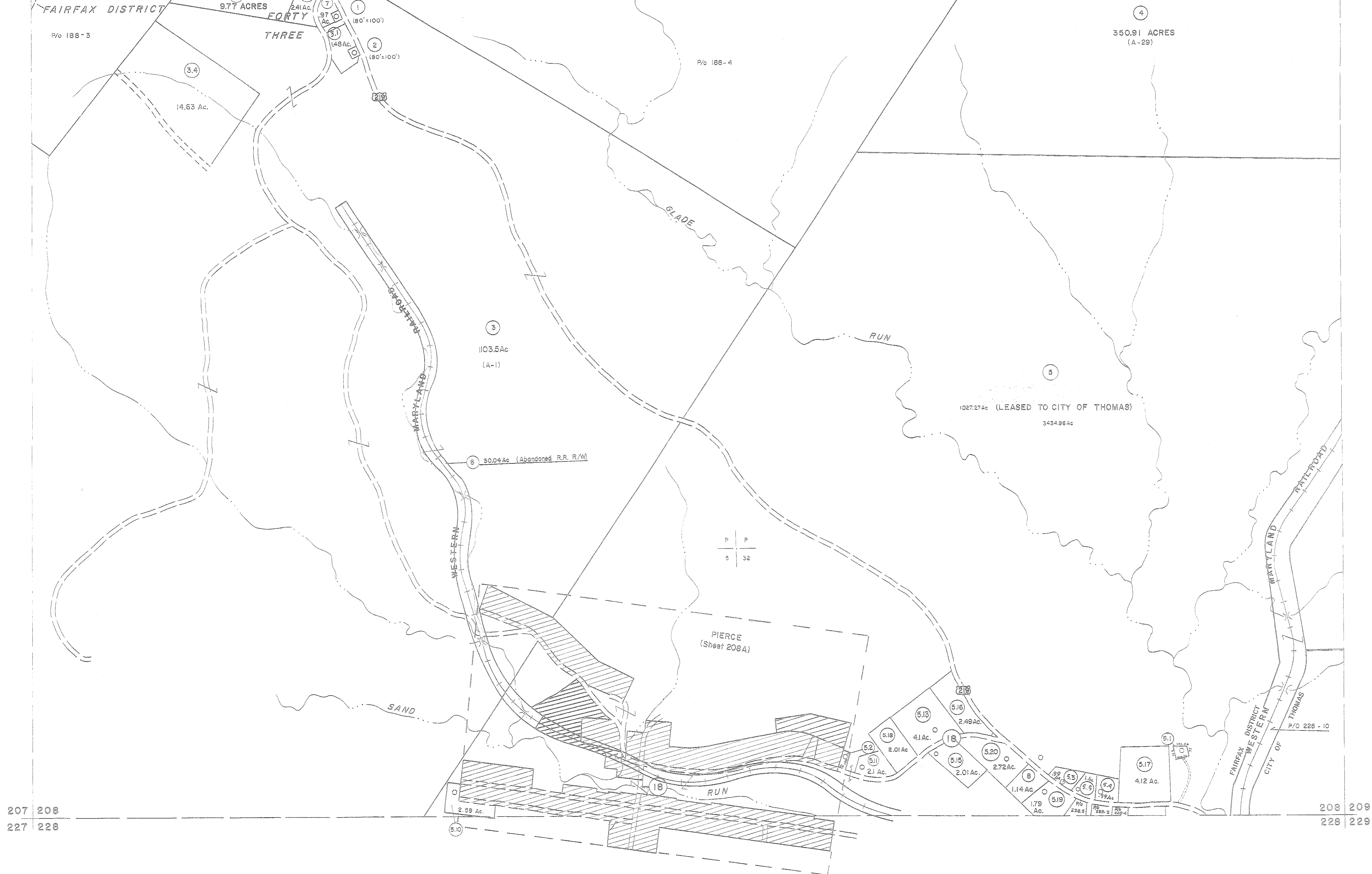


187 188
207 208

188 189
208 209



207 208
227 228

208 209
228 229

For Tax Purposes Only

Prepared by
MICHAEL BAKER, JR., INC.
Consulting Engineers
Rochester, Pennsylvania

Legend	
Property line	Original lot line
Edge of pavement or roadway	Deed lot number
Corporation line	Parcel or index number
District line	Improvement
County line	Railroad

Revisions					
1	11/20/78	DC	SLS INC.	2/23/98	JWM
2	REV. TO 7-1-86	NCS	SLS INC.	1/27/99	DSW
3	REV. TO 3-1-89	R.E.B.	SLS INC.	3/1/00	JWM
4	OGIS 2-19-92	TL	ESI	1/31/01	REK
5	OGIS 2-95	HD	ESI	2/7/02	REK
6	OGIS 4-1-96	J.E.S.	HBS	2/20/03	REK
7	SLS INC. - DDC 5/97		S.B.H.	2/22/04	
8				5/26/15	S.B.H.
9				3/21/05	
10				3/28/06	S.B.H.
11				6-22-08	TT#5
12				6-21-09	TT#5
13				8-8-10	TT#5
14				6/23/11	S.B.H.
15				5-4-13	TT#5
16					S.B.H.

KEY MAP

TUCKER COUNTY
STATE OF WEST VIRGINIA
Office of Assessor

DISTRICT
FAIRFAX

SHEET NO: 208

Date, Aerial Photography: Nov., 1961 Date, Map: DS, 1962
Photo No: Scale: 1" = 400'