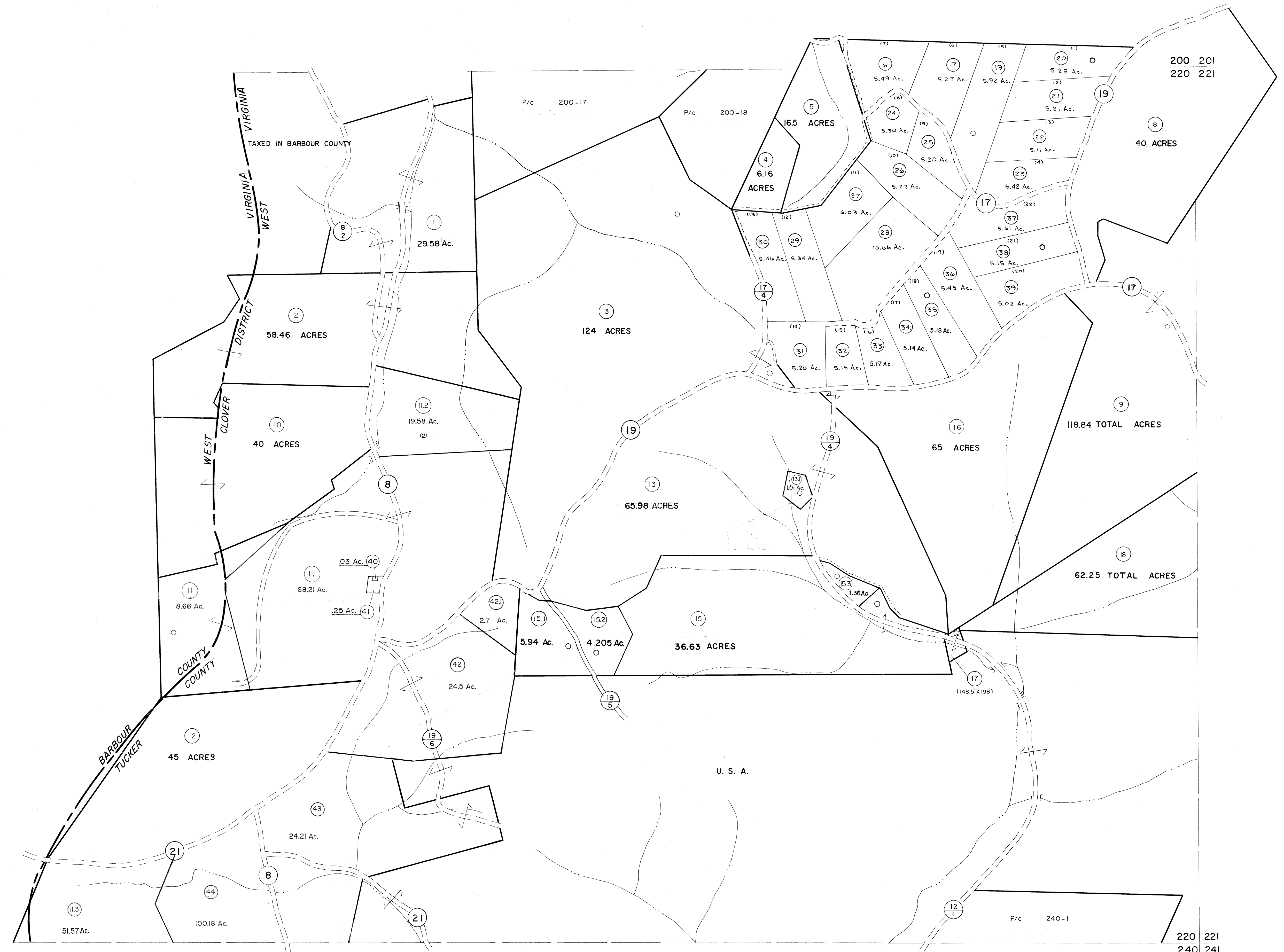


200
220

220
240



For Tax Purposes Only
 Prepared by
MICHAEL BAKER, JR., INC.
 Consulting Engineers
 Rochester, Pennsylvania

| Legend | |
|-----------------------------|------------------------|
| Property line | Original lot line |
| Edge of pavement or roadway | Deed lot number |
| Corporation line | Parcel or index number |
| District line | Improvement |
| County line | Railroad |

| Revisions | |
|-------------------------|----------------------------|
| 1 6-3-75 JC | 9 OGIS 4-95 HD 17 |
| 2 11-1-83 JC | 10 SLS INC. - DDC 5/97 18 |
| 3 7-1-85 JC | 11 SLS INC. 2/23/98 JWM 19 |
| 4 REV. TO 7-1-86 NCS | 12 SLS INC. 1/27/99 DSW 20 |
| 5 Rev. to 3-1-89 R.E.B. | 13 ESI 1/31/01 REK 21 |
| 6 OGIS 3-19-92 T.L. | 14 HBS 2/22/04 22 |
| 7 OGIS 1/25/93 DSH | 15 23 |
| 8 OGIS 12/11/93 SAJ | 16 24 |

KEY MAP

TUCKER COUNTY
 STATE OF WEST VIRGINIA
 Office of Assessor

DISTRICT
CLOVER
 SHEET NO: 220
 Date, Aerial Photography: November, 1961 Date, Map: Dec., 1962
 Photo No: Scale: 1" = 400'