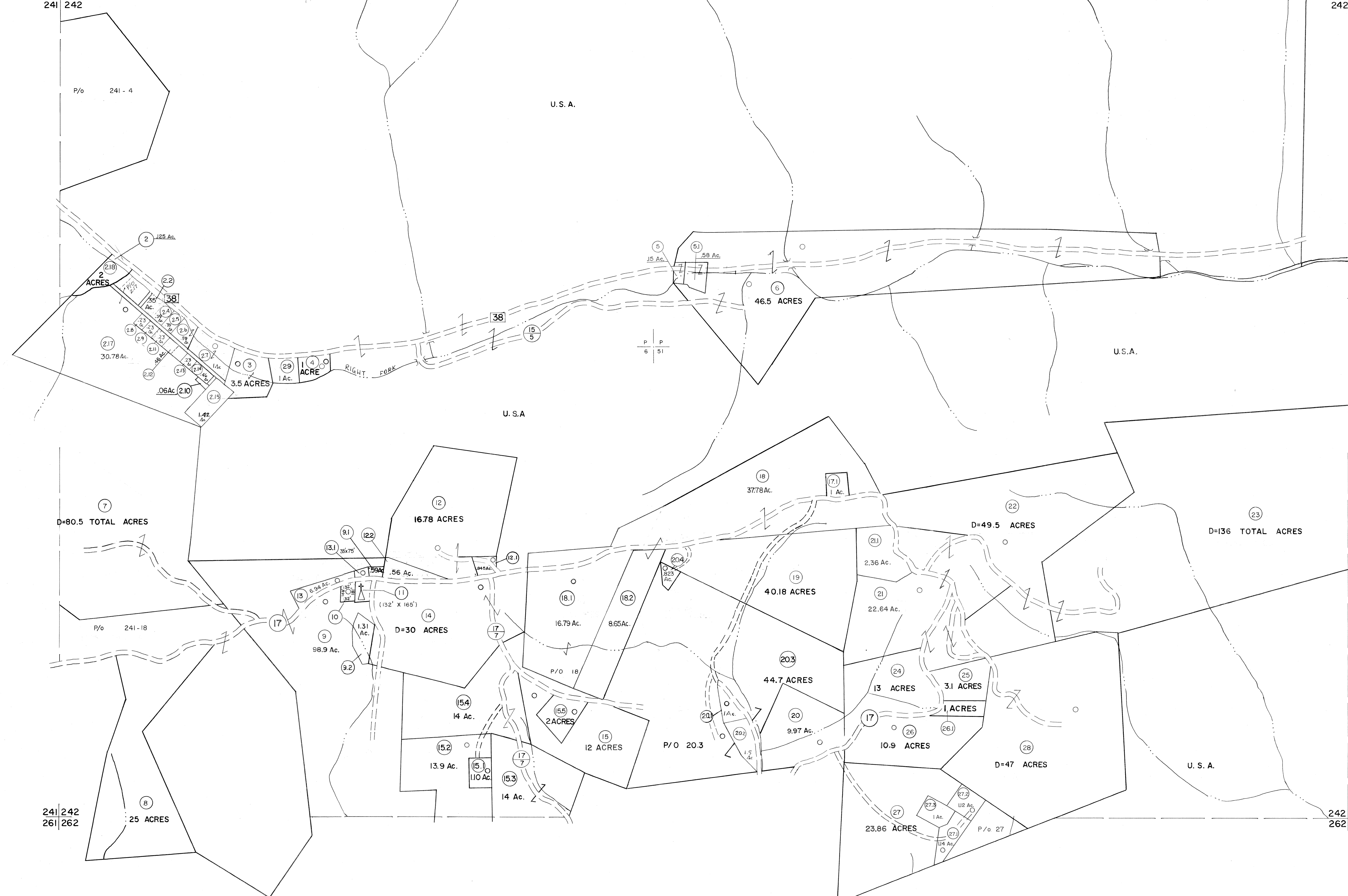


221 222
241 242

222 223
242 243



For Tax Purposes Only

Prepared by
MICHAEL BAKER, JR., INC.
Consulting Engineers
Rochester, Pennsylvania

Legend	
Property line	—————
Edge of pavement or roadway	—————
Corporation line	—————
District line	—————
County line	—————
Original lot line	-----
Deed lot number	(15)
Parcel or index number	(29)
Improvement	○
Railroad	—+—+—+—

Revisions	
1	JUNE 75 PAM
2	11-21-78 DG
3	Revised to 7-1-88
4	7-1-84 L.E.S.
5	Revised to 7-1-85
6	REV. TO 7-1-86 N.C.S.
7	REV. TO 3-1-89 R.E.B.
8	OGIS 12/31/90 DSH
9	OGIS 3-19-92 TL
10	OGIS 1/25/93 DSH
11	OGIS 12/11/93 SAJ
12	O.G.I.S 4-1-96 J.E.B
13	SLS INC. - DDC 5/97
14	SLS INC. 2/23/98 JWM
15	SLS INC. 1/27/99 DSW
16	ESI 1/31/01 REK
17	ESI 2/8/02 REK
18	H&S 2/22/04
19	3/24/07 S8H
20	
21	
22	
23	
24	

KEY MAP

TUCKER COUNTY
STATE OF WEST VIRGINIA
Office of Assessor

DISTRICT
CLOVER

SHEET NO: 242

Date, Aerial Photography: November, 1961 Date, Map: Dec, 1962
Photo No: Scale: 1" = 400'