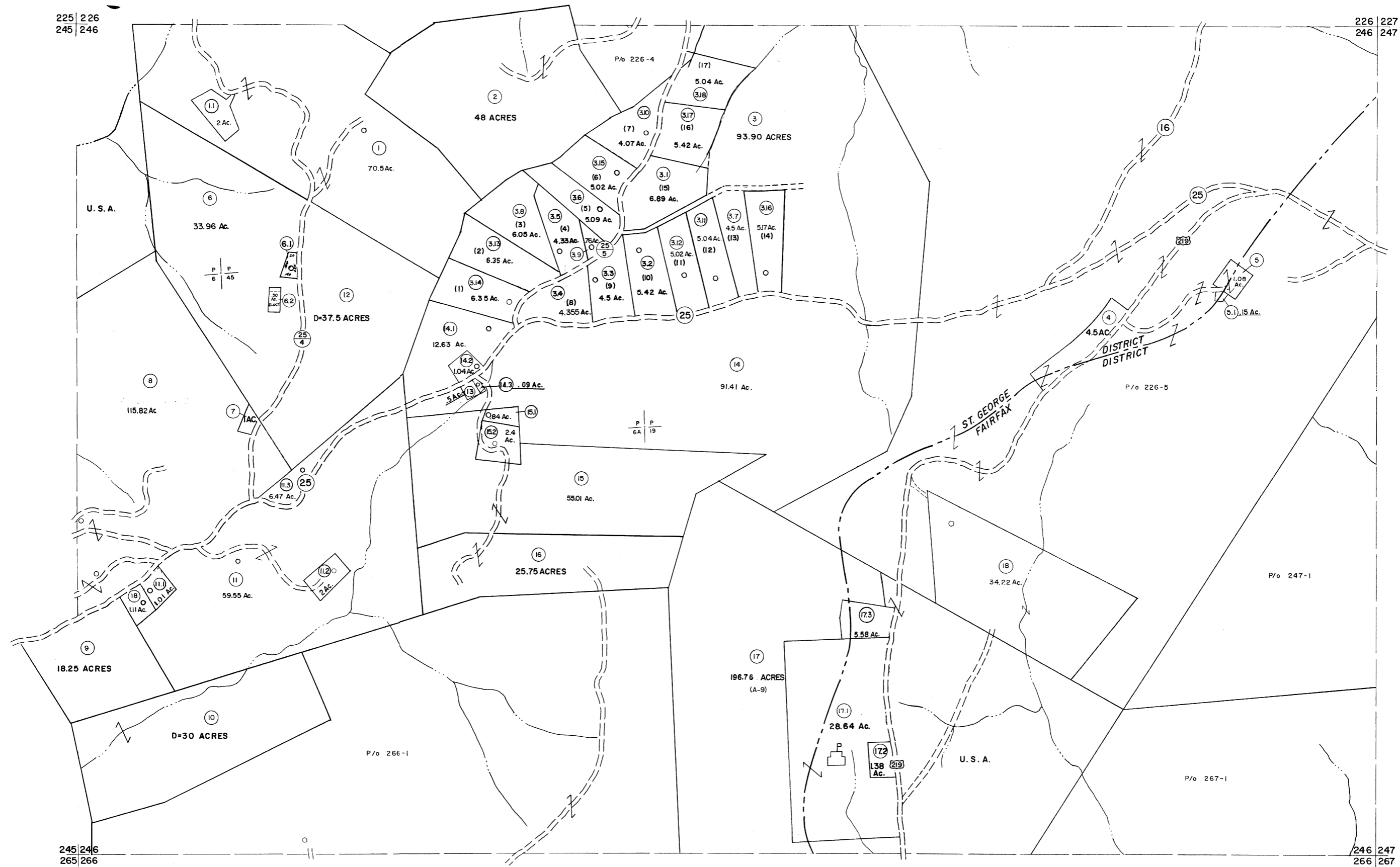


225 | 226  
245 | 246

226 | 227  
246 | 247



245 | 246  
265 | 266

246 | 247  
266 | 267

For Tax Purposes Only

Prepared by  
**MICHAEL BAKER, JR., INC.**  
Consulting Engineers  
Rochester, Pennsylvania

**Legend**

Property line	—	Original lot line	---
Edge of pavement or roadway	---	Deed lot number	(15)
Corporation line	---	Parcel or index number	(99)
District line	---	Improvement	○
County line	---	Railroad	—+—

**Revisions**

1	11-21-78	T.G.	9	OGIS	3-19-92	TL	17	ESI	2/20/03	REK
2	Revised to 7-1-83		10	OGIS	12/11/93	SAJ	18	HBS	2/19/03	
3	7-1-84	L.E.S.	11	OGIS	2-95	HD	19		3/21/05	S&H
4	11-1985		12	O.G.I.S.	4-1-96	J.E.B.	20		3/24/07	S&H
5	REV TO 7-1-86	N.C.S.	13	SLS INC.	DDC 5/97		21		4-21-09	H&S
6	Revised to 7-1-87		14	SLS INC.	2/23/98	J.W.M.	22		5-8-10	H&S
7	REV. TO 3-1-89	R.E.B.	15	ESI	2/8/02	REK	23			
8	OGIS	12/31/90	DSH.	16			24			

**KEY MAP**



**TUCKER COUNTY**  
STATE OF WEST VIRGINIA  
Office of Assessor

DISTRICT  
**ST. GEORGE FAIRFAX**

SHEET NO: 246

Date, Aerial Photography: Nov., 1962  
Date, Map: Dec., 1962  
Photo No: Scale: 1" = 400'