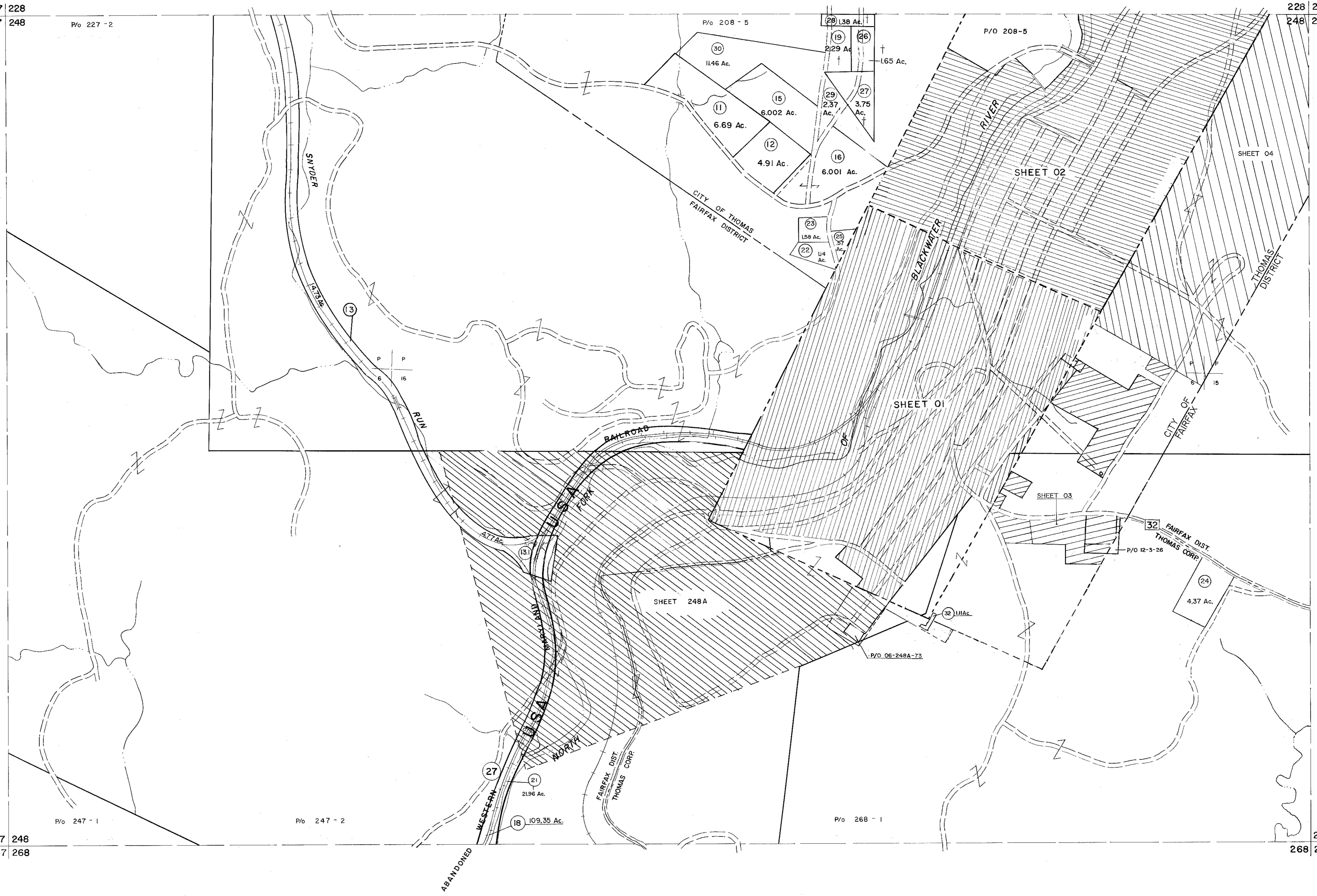


227 228
247 248

P/O 227-2

228 229
248 249



247 248
267 268

P/O 247-1

P/O 247-2

P/O 268-1

249
268 269

For Tax Purposes Only

Prepared by
MICHAEL BAKER, JR., INC.
Consulting Engineers
Rochester, Pennsylvania

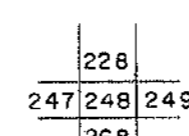
Legend

Property line	—————	Original lot line	-----
Edge of pavement or roadway	-----	Dead lot number	(15)
Corporation line	-----	Parcel or index number	(19)
District line	-----	Improvement	o
County line	-----	Railroad	———x———

Revisions

No.	Date	By	Description
1	11-27-78	T.C.	O.G.I.S. 4-1-96 J.E.B.
2	Revised to 7-1-85	NCS	SLS INC. - DDC 5/97
3	REV. TO 7-1-86	NCS	SLS INC. - DDC 7/97
4	REV. TO 3-1-89	R.E.B.	SLS INC. 2/23/98 J.W.M.
5	OGIS 1/1/91	DSH	SLS INC. 1/27/99 DSW
6	OGIS 3-19-92	TL	SLS INC. 3/1/00 J.W.M.
7	OGIS 1/25/93	DSH	ESI 2/8/02 REK
8	OGIS 2-95	HD	3/21/05 S.B.H.

KEY MAP



TUCKER COUNTY
STATE OF WEST VIRGINIA
Office of Assessor

DISTRICT

FAIRFAX - DAVIS

SHEET NO: 248

Date, Aerial Photography: November, 1961 Date, Map: Dec. 1962
Photo No: Scale: 1" = 400'