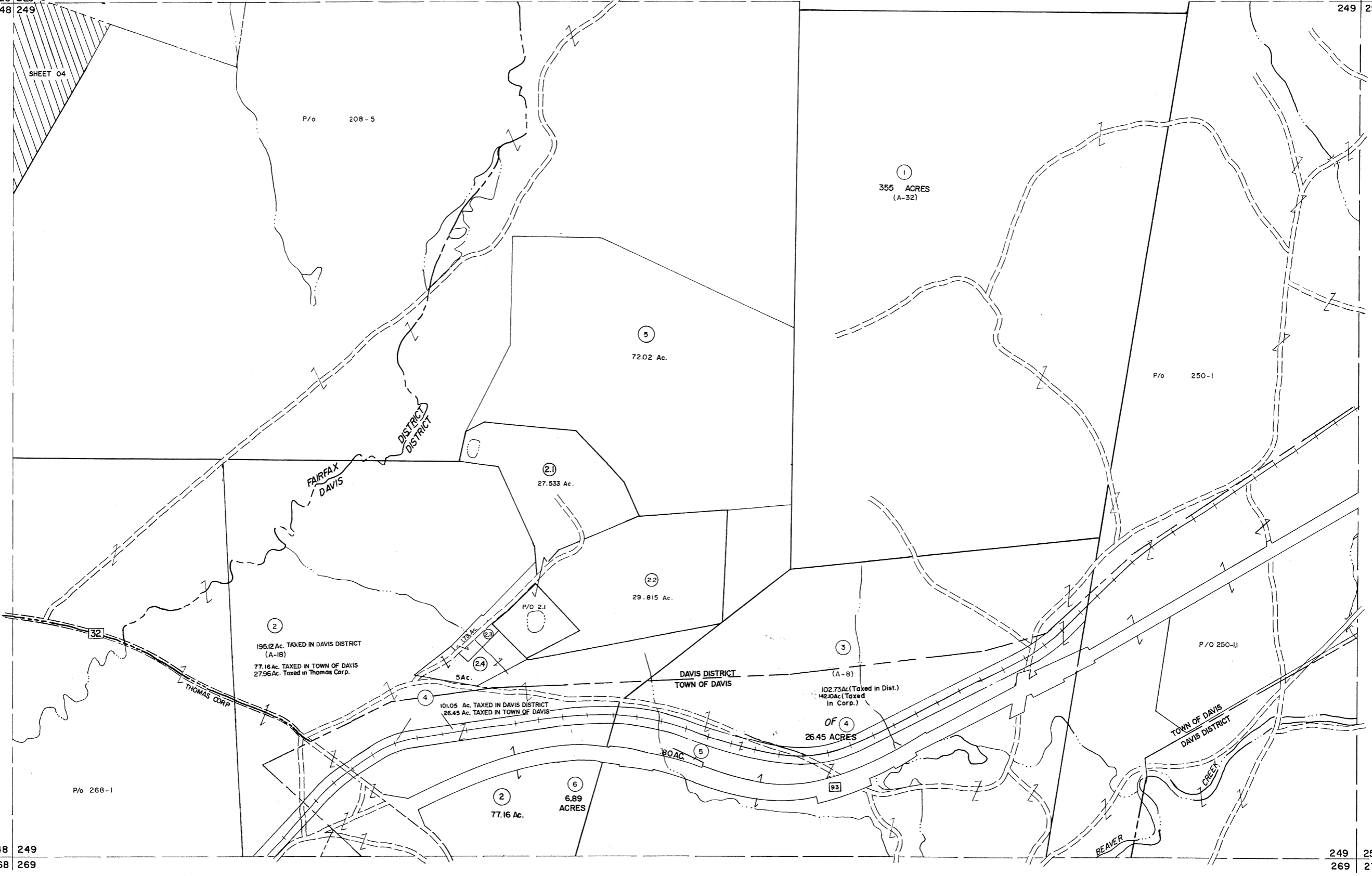


228 229
248 249

229 230
249 250



248 249
268 269

249 250
269 270

For Tax Purposes Only

Prepared by
MICHAEL BAKER, JR., INC.
Consulting Engineers
Rochester, Pennsylvania

Legend

Property line	—	Original lot line	- - - -
Edge of pavement or roadway	—	Deed lot number	(15)
Corporation line	—	Parcel or index number	(29)
District line	- - - -	Improvement	o
County line	- - - -	Railroad	o

Revisions

1	PAH 11-78	9	SLS INC. - DDC 7/97	17	6-21-09	H 4 5
2	Revised to 7-1-88	10	SLS INC. 2/23/98	JWM	18	
3	REV. TO 7-1-86	NCS	SLS INC. 1/27/99	DSW	19	
4	OGIS 1/1/91	DSH	SLS INC. 3/1/00	JWM	20	
5	OGIS 1/26/93	DSH	ESI 2/5/01	REK	21	
6	OGIS 2-95	HD	3/21/05	SBH	22	
7	D.G.I.S 4-1-96	J.E.B	3/24/07	SBH	23	
8	SLS INC. - DDC 5/97	18	6-22-08	H 4 5	24	

KEY MAP



TUCKER COUNTY

STATE OF WEST VIRGINIA

Office of Assessor

DISTRICT

DAVIS-FAIRFAX

SHEET NO: 249

Date, Aerial Photography: November, 1961 Date, Map: Dec. 1962
Photo No. Scale: 1" = 400'