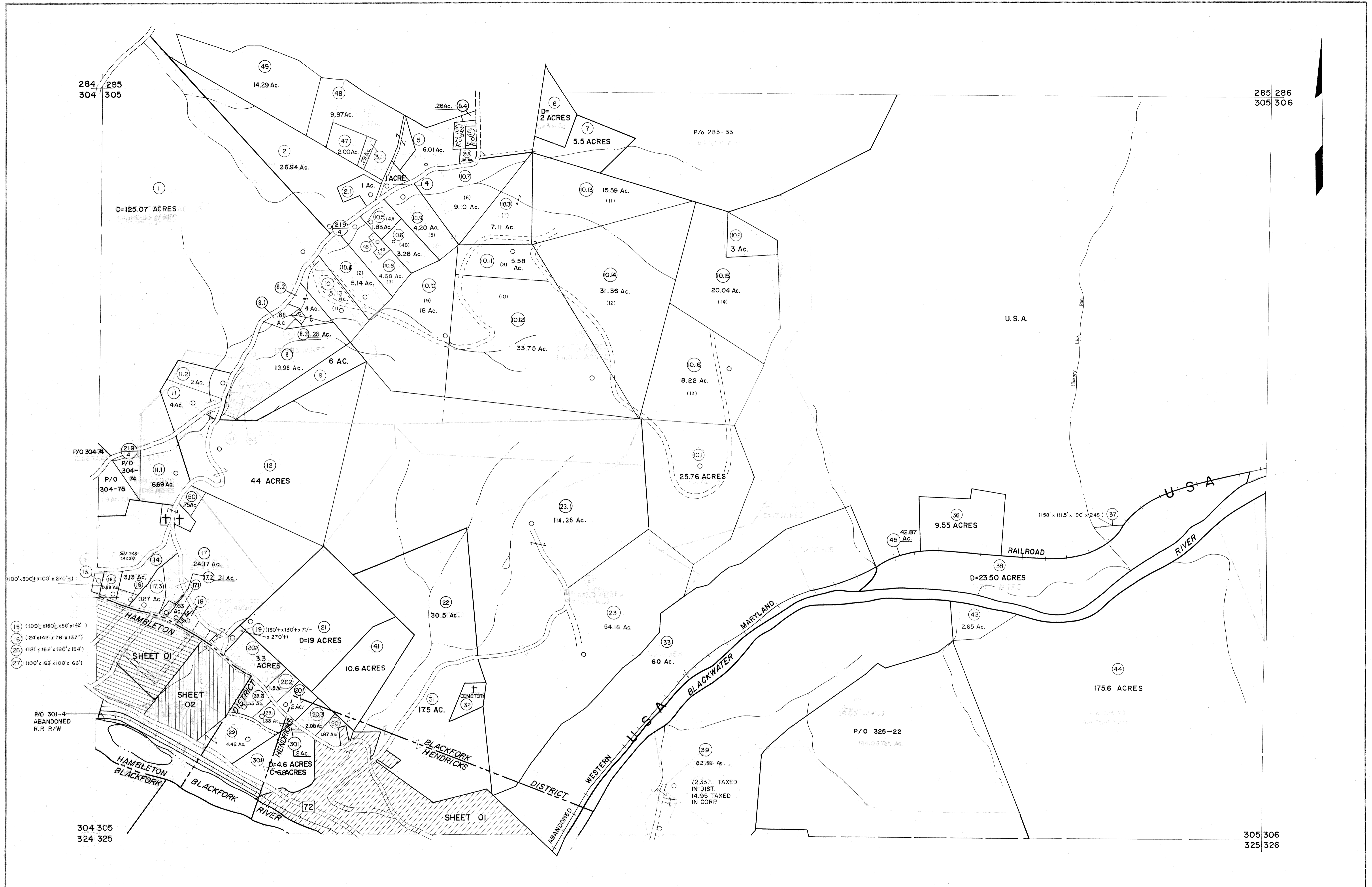


284 285
304 305

285 286
305 306

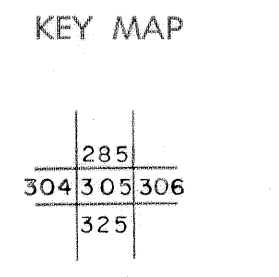


- (15) (100' x 150' x 50' x 142')
- (16) (124' x 142' x 78' x 137')
- (26) (181' x 165' x 180' x 154')
- (27) (100' x 168' x 100' x 166')

For Tax Purposes Only
 Prepared by
MICHAEL BAKER, JR., INC.
 Consulting Engineers
 Rochester, Pennsylvania

Legend	
Property line	Original lot line
Edge of pavement or roadway	Deed lot number
Corporation line	Parcel or index number
District line	Improvement
County line	Railroad

Revisions			
1	10-3-63		
2	6-3-75		
3	11-26-78	BAH	
4	Revised to 7-1-83		
5	Revised to 7-1-85		
6	July, 1986	TRL	
7	Revised to 7-1-87		
8	Revised to 3-1-89	R.L.B.	
9	OGIS 1/4/91	DSH	
10	OGIS 3-19-92	TL	
11	OGIS 1/30/93	DSH	
12	OGIS 12/11/93	SAJ	
13	OGIS 2-95	HD	
14	O.G.I.S. 4-1-96	J.E.B.	
15	SLS INC. - DDC	5/97	
16	SLS INC.	3/3/98	JWM
17	SLS INC.	1/28/99	DSW
18	SLS INC.	3/2/00	JWM
19	ESI	2/1/01	REK
20	ESI	2/20/02	REK
21	H&S	2/19/04	
22		3/21/05	S&H
23		3/24/07	S&H
24			



TUCKER COUNTY
 STATE OF WEST VIRGINIA
 Office of Assessor

DISTRICT **BLACKFORK**
SHEET NO: 305
 Date, Aerial Photography: November, 1961 Date, Map: Dec, 1962
 Photo No: Scale: 1" = 400'