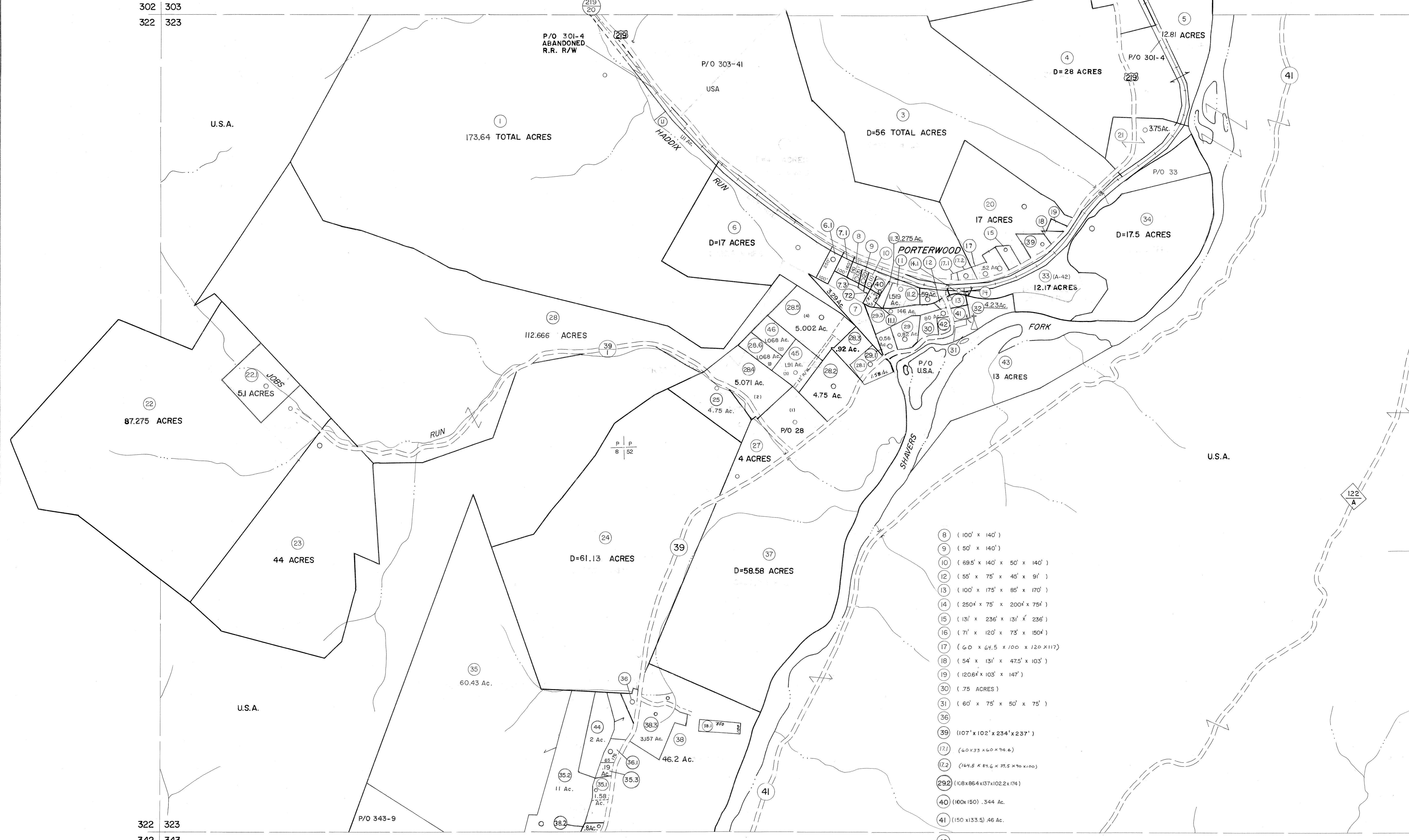


302 303
322 323

303 304
323 324



- 8 (100' x 140')
- 9 (50' x 140')
- 10 (69.5' x 140' x 50' x 140')
- 12 (55' x 75' x 45' x 91')
- 13 (100' x 175' x 85' x 170')
- 14 (250' x 75' x 200' x 75')
- 15 (131' x 236' x 131' x 236')
- 16 (71' x 120' x 73' x 150')
- 17 (60' x 64.5' x 100' x 120' x 117')
- 18 (54' x 131' x 47.5' x 103')
- 19 (1206' x 103' x 147')
- 30 (.75 ACRES)
- 31 (60' x 75' x 50' x 75')
- 36
- 39 (107' x 102' x 234' x 237')
- 171 (60 x 33 x 60 x 74.6)
- 172 (141.5' x 81.6' x 37.5' x 70 x 100)
- 292 (108 x 86.4 x 137 x 102.2 x 174)
- 40 (100 x 150) .344 Ac.
- 41 (150 x 133.5) .46 Ac.
- 42 (132 x 82.5) .25 Ac.
- 72 .03 Ac.
- 73 .02 Ac.

322 323
342 343

323 324
343 344

For Tax Purposes Only

Prepared by
MICHAEL BAKER, JR., INC.
Consulting Engineers
Rochester, Pennsylvania

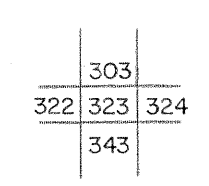
Legend

Property line	—	Original lot line	- - - - -
Edge of pavement or roadway	— — — — —	Deed lot number	(15)
Corporation line	— · — · —	Parcel or index number	(49)
District line	— · — · —	Improvement	○
County line	— · — · —	Railroad	— + — + —

Revisions

1	10-3-63	9	REV. TO 3-1-89	R.E.B.	17	SLS INC.	3/2/00	JWM
2	4-4-75	10	OGIS 1/5/91	DSH	18	ESI	2/1/01	REK
3	11-27-78	11	OGIS 3-19-92	TL	19	ESI	2/20/03	REK
4	Revised to 7-1-85	12	OGIS 1/30/93	DSH	20	HAS	2/19/04	
5	7-1-84	13	O.G.I.S. 4-1-96	J.E.B.	21		3/21/05	S.B.H.
6	July 1985	14	SLS INC. - DDC	5/97	22			
7	July 1986	15	SLS INC.	3/3/98	JWM	23		
8	Revised to 7-1-87	16	SLS INC.	1/28/99	DSW	24		

KEY MAP



TUCKER COUNTY

STATE OF WEST VIRGINIA

Office of Assessor

DISTRICT

BLACKFORK

SHEET NO: 323

Date, Aerial Photography: November, 1961 Date, Map: Dec, 1962
Photo No: Scale: 1" = 400'