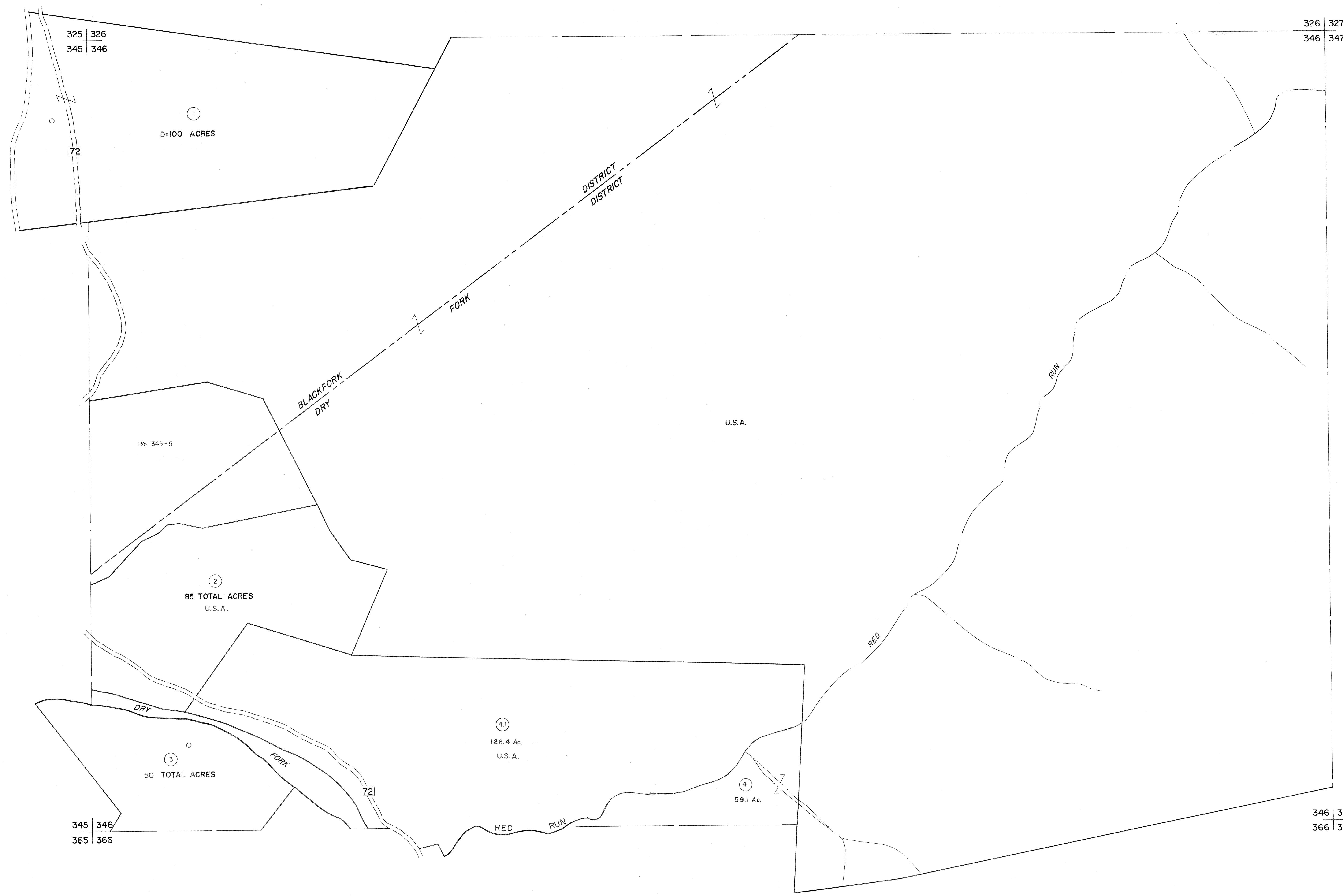


325 | 326
345 | 346

326 | 327
346 | 347



345 | 346
365 | 366

346 | 347
366 | 367

For Tax Purposes Only

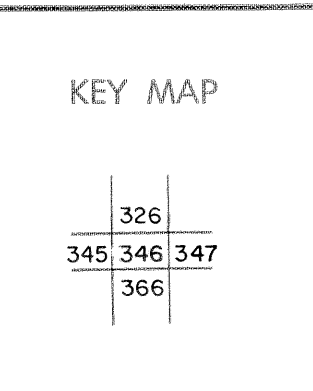
Prepared by
MICHAEL BAKER, JR., INC.
Consulting Engineers
Rochester, Pennsylvania

Legend

| | | | |
|-----------------------------|-----------|------------------------|-----------|
| Property line | — | Original lot line | - - - - - |
| Edge of pavement or roadway | — · — · — | Deed lot number | (15) |
| Corporation line | - · - · - | Parcel or index number | (99) |
| District line | - · - · - | Improvement | ○ |
| County line | - - - - - | Railroad | —+—+—+— |

Revisions

| | | | |
|---|-------------------|----|----|
| 1 | Revised to 7-1-83 | 9 | 17 |
| 2 | OGIS 1/5/91 DSH | 10 | 18 |
| 3 | OGIS 1/31/93 DSH | 11 | 19 |
| 4 | ESI 2/12/02 REK | 12 | 20 |
| 5 | | 13 | 21 |
| 6 | | 14 | 22 |
| 7 | | 15 | 23 |
| 8 | | 16 | 24 |



TUCKER COUNTY
STATE OF WEST VIRGINIA
Office of Assessor

DISTRICT **BLACKFORK DRY FORK**

SHEET NO: 346

Date, Aerial Photography: November, 1961 Date, Map: Dec. 1962
Photo No: Scale: 1" = 400'