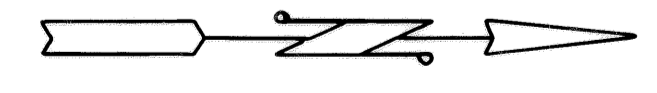
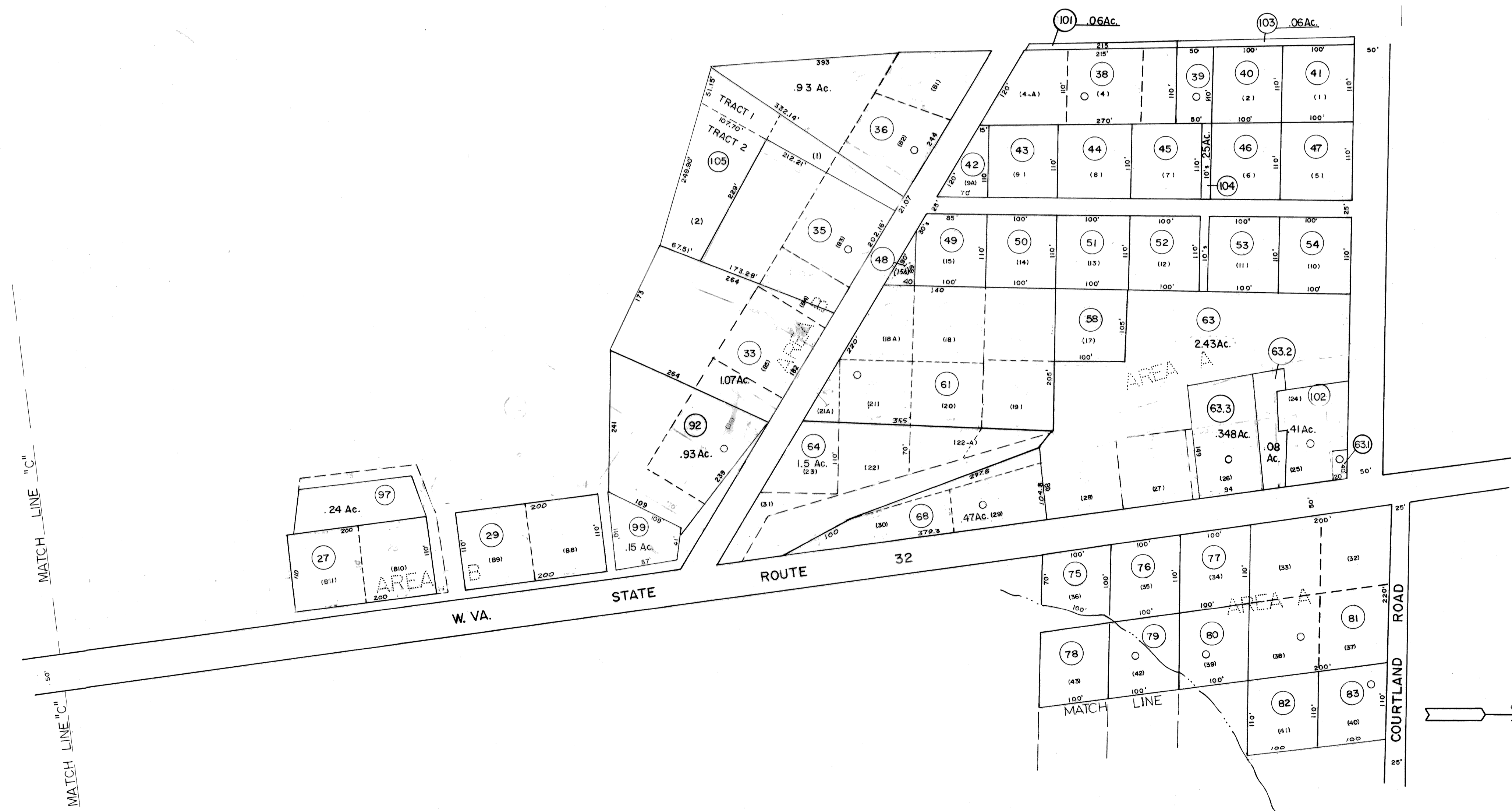
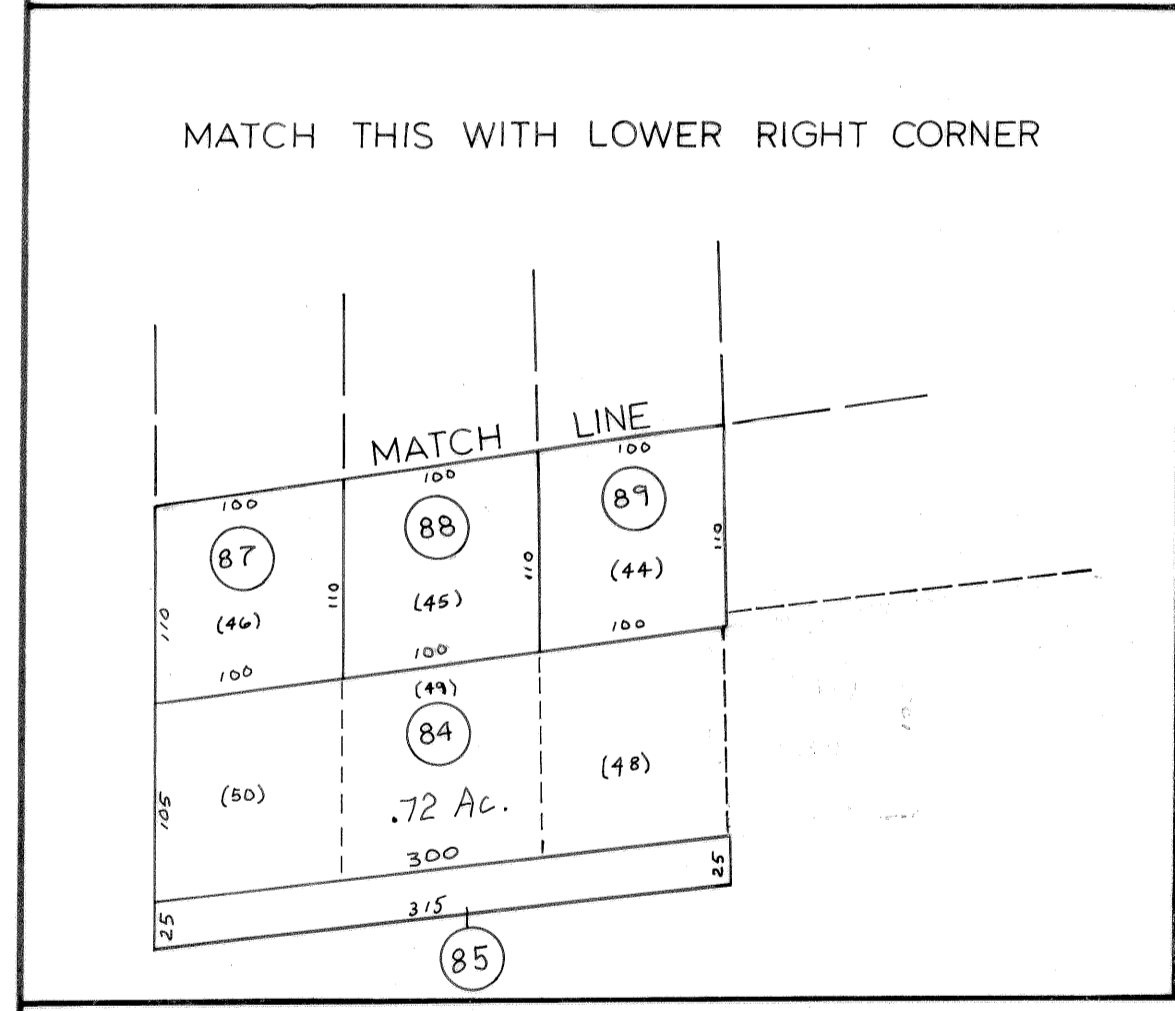
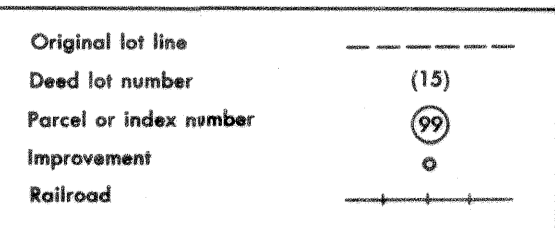
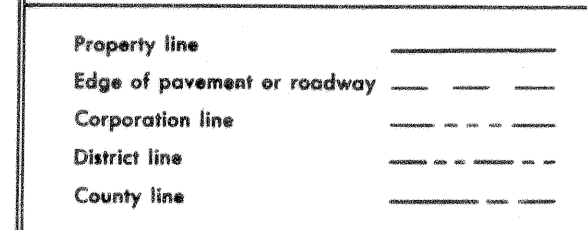


W. VA. STATE ROUTE 32



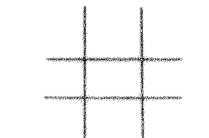
For Tax Purposes Only

Prepared by  
ASSESSMENT EQUALIZATION DIV.  
STATE TAX COMMISSIONER  
CHARLESTON, W. VA.



Revisions			
1	6-5-75	T.E.	9
2	11-22-78	D.G.	10
3	Revised to 7-1-83		11
4	7-1-84	L.E.S.	12
5	1/1/85		13
6	Rev. to 3-1-89	R.E.B.	14
7	OGIS 1/5/91	DSH	15
8	OGIS 3-19-92	TL	16
9	OGIS 1/31/93	DSH	17
10	OGIS 2-95	HD	18
11	O.G.I.S 4-1-96	J.E.B	19
12	SLS INC. 1/28/99	DSW	20
13	ESI 2/12/02	REK	21
14	HBS 2/19/04		22
15	3/28/06	S.B.H	23
16			24

KEY MAP



TUCKER COUNTY  
STATE OF WEST VIRGINIA  
Office of Assessor

DISTRICT DRY FORK

SHEET NO: 350-A

Date, Aerial Photography: NOV. '66  
Photo No: Scale: 1" = 100'