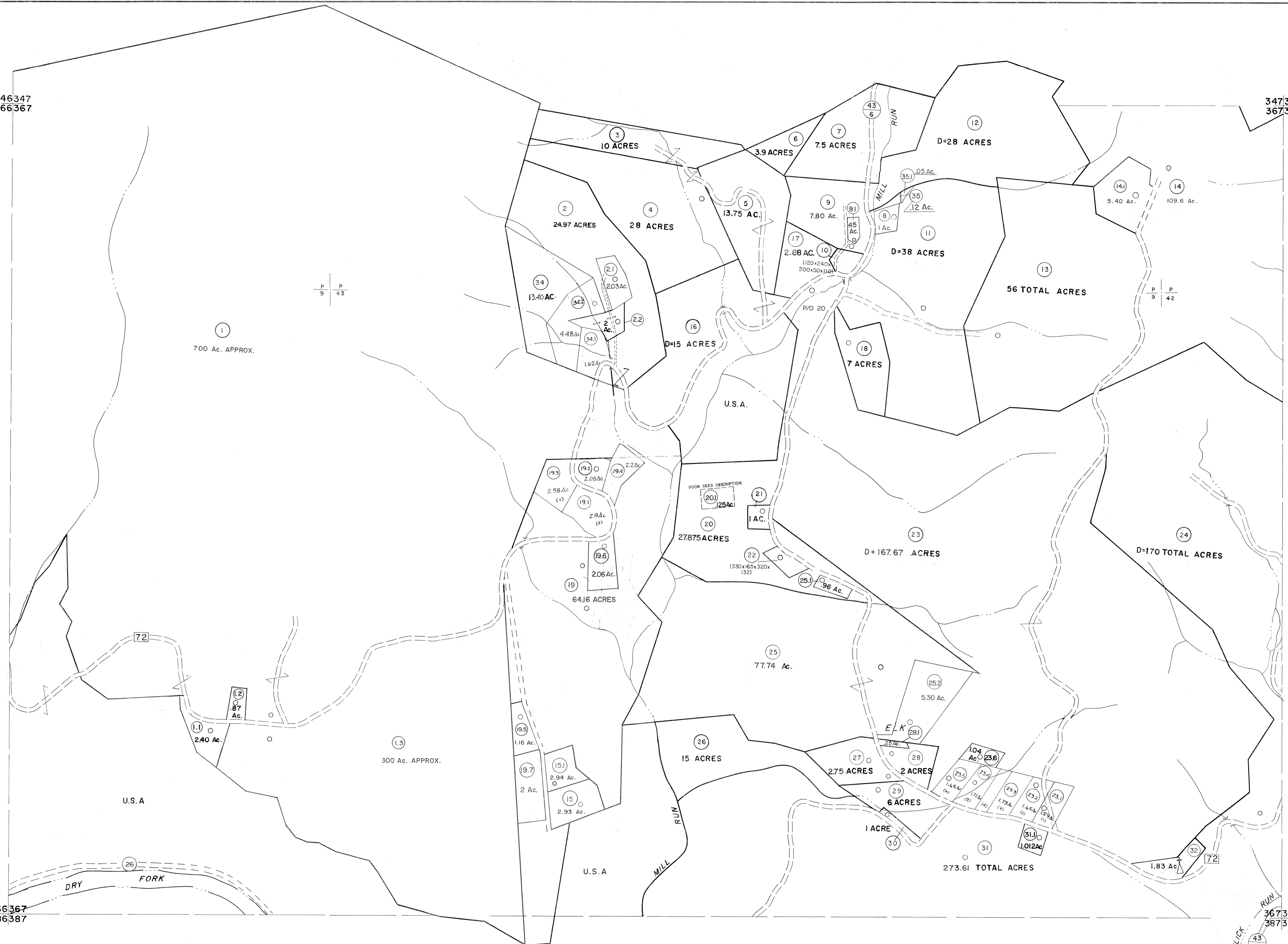


346347  
366367

347348  
367368

366367  
386387

367368  
387388



For Tax Purposes Only

Prepared by  
MICHAEL BAKER, JR., INC.  
Consulting Engineers  
Rochester, Pennsylvania

Legend

Property line	—	Original lot line	- - - - -
Edge of pavement or roadway	—	Deed lot number	(15)
Corporation line	—	Parcel or index number	(9)
District line	—	Improvement	○
County line	—	Railroad	—+—

Revisions

1	6-3-04	9	OGIS 1/31/93	DSH	17	ESI 2/20/03	REK
2	11-22-78	10	OGIS 2-95	HD	18	HBS 2/19/04	
3	Revised to 7-1-88	11	O.G.I.S. 4-1-96	J.E.B	19	3/21/05	S.B.H
4	7-1-84	12	SLS INC. - DDC 5/97		20		
5	July, 1986	13	SLS INC. 1/28/99	DSW	21		
6	Rev. to 3-1-89	14	SLS INC. 3/2/00	JWM	22		
7	OGIS 1/6/91	15	ESI 2/12/02	REK	23		
8		16			24		

KEY MAP

347  
366367368  
387

TUCKER COUNTY  
STATE OF WEST VIRGINIA  
Office of Assessor

DISTRICT

DRY FORK

SHEET NO: 367

Date, Aerial Photography: November, 1961 Date, Map: Dec. 1962  
Photo No. Scale: 1"=400'