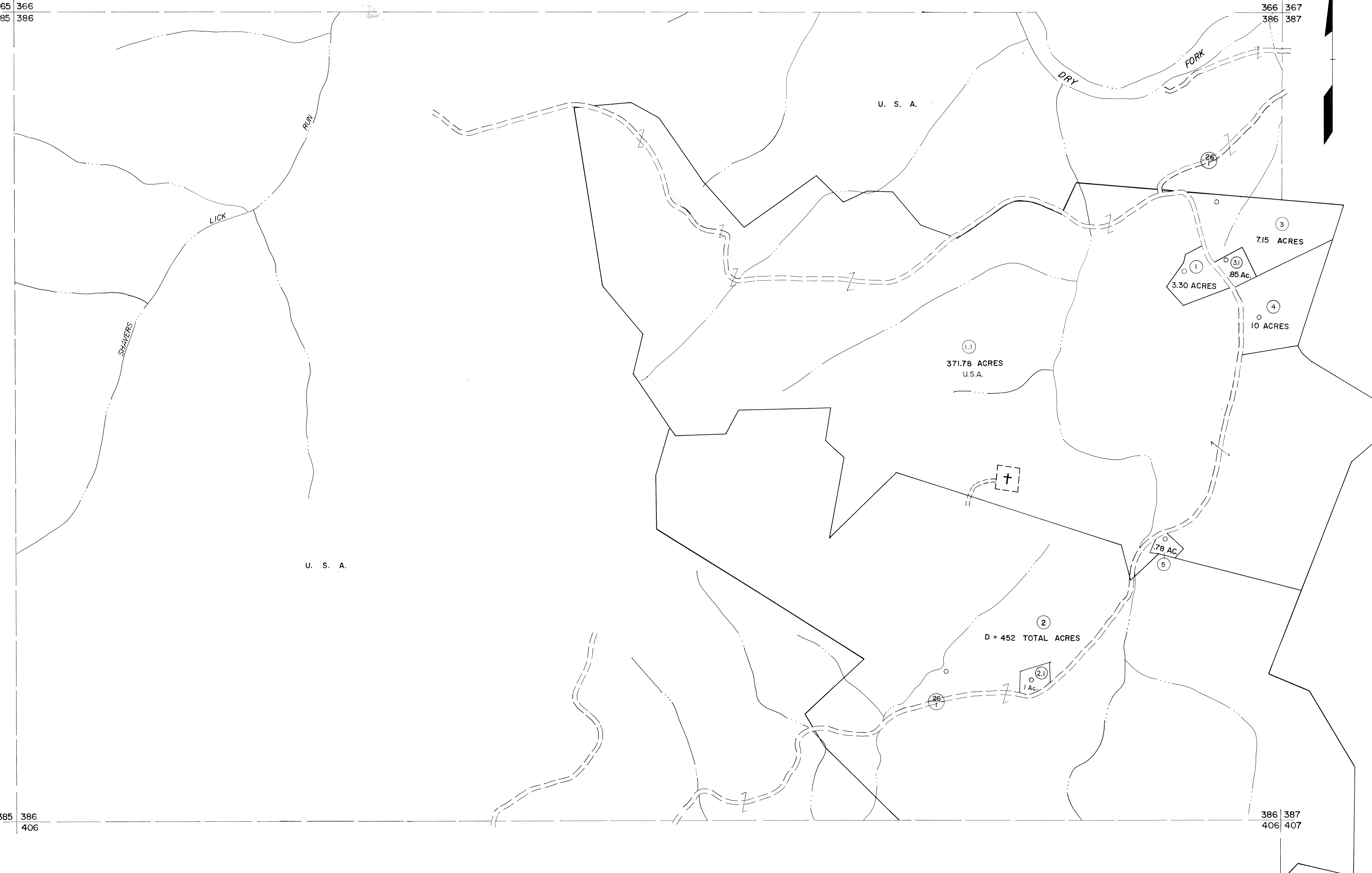


365 366  
385 386

366 367  
386 387

385 386  
406

386 387  
406 407



For Tax Purposes Only

Prepared by  
MICHAEL BAKER, JR., INC.  
Consulting Engineers  
Rochester, Pennsylvania

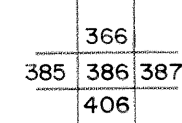
Legend

Property line	—————	Original lot line	- - - - -
Edge of pavement or roadway	—————	Deed lot number	(15)
Corporation line	—————	Parcel or index number	(2)
District line	—————	Improvement	○
County line	—————	Railroad	+

Revisions

1	11-27-78	DG	9	17
2	REV. TO 7-1-83	NCS	10	18
3	REV. TO 7-1-85	NCS	11	19
4	OGIS 1/6/91	DSH	12	20
5	OGIS 3-19-92	TL	13	21
6	OGIS 2/1/93	DSH	14	22
7	OGIS 12/12/93	SAJ	15	23
8			16	24

KEY MAP



TUCKER COUNTY  
STATE OF WEST VIRGINIA  
Office of Assessor

DISTRICT

DRY FORK

SHEET NO: 386

Date, Aerial Photography: November, 1961 Date, Map: Dec., 1962  
Photo No: Scale: 1" = 400'