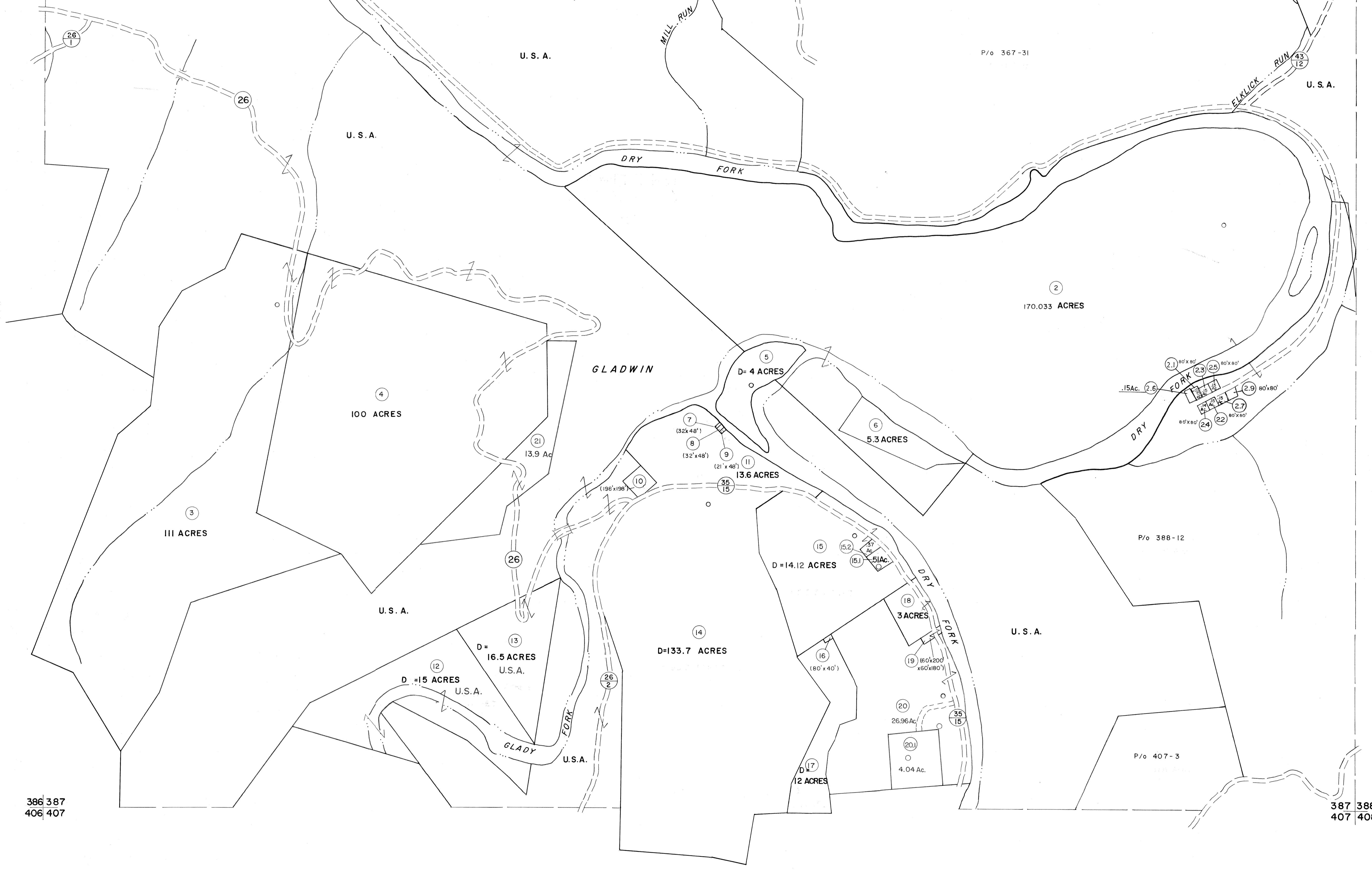


366 367
386 387

367 368
387 388



386 387
406 407

387 388
407 408

For Tax Purposes Only

Prepared by
MICHAEL BAKER, JR., INC.
Consulting Engineers
Rochester, Pennsylvania

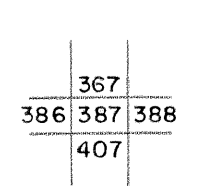
Legend

Property line	—	Original lot line	- - - - -
Edge of pavement or roadway	— · — · —	Deed lot number	(15)
Corporation line	- - - - -	Parcel or index number	(22)
District line	- · - · -	Improvement	o
County line	- - - - -	Railroad	— + — + —

Revisions

1	11-27-78	DG	9	OGIS	2/1/93	DSH	17
2	REV. TO 7-1-83	NCS	10	OGIS	12/12/93	SAJ	18
3	7-1-84	L.E.S.	11	SLS INC.	1/28/99	DSW	19
4	REV. TO 7-1-85	NCS	12	REV. TO	2/21/00		20
5	July 1986	TRL	13	ESI	2/20/03	REK	21
6	Revised to 7-1-87		14	3/24/07		S & H	22
7	OGIS	1/6/91	DSH	15			23
8	OGIS	3-19-92	TL	16			24

KEY MAP



TUCKER COUNTY
STATE OF WEST VIRGINIA
Office of Assessor

DISTRICT
DRY FORK

SHEET NO: 387

Date, Aerial Photography: November, 1961 Date, Map: Dec. 1962
Photo No: Scale: 1" = 400'