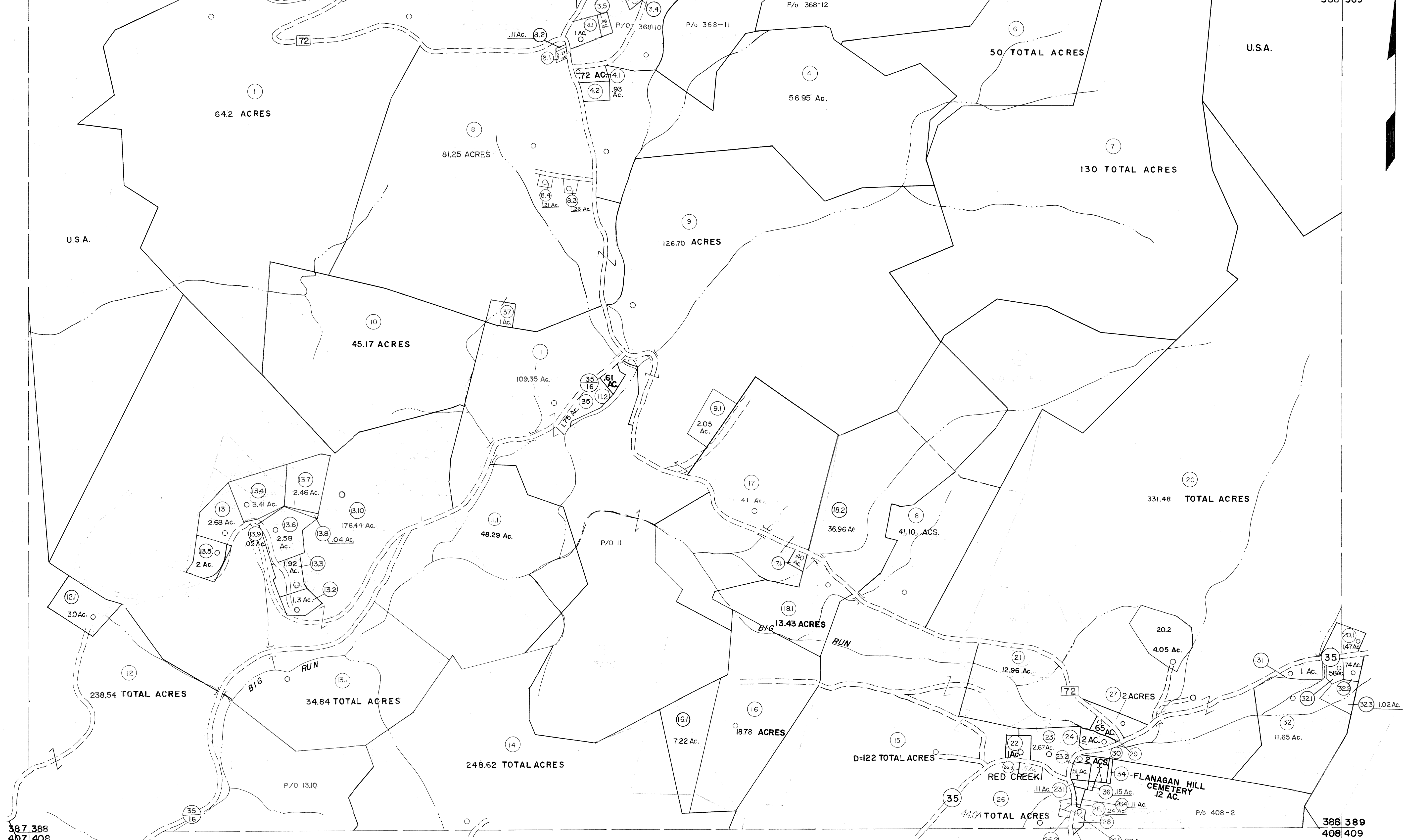


367 368
387 388

368 369
388 389



387 388
407 408

388 389
408 409

- 22 (1 ACRE)
- 25 (132' x 49' x 148' x 115')
- 27 (49' x 132' x 115' x 33' x 313')
- 28 (165' x 66' x 274' x 214')
- 29 (66' x 66')
- 30 (100' x 120' x 99' x 132' (D) x 165' (S))
- 31 (165' x 181' x 66' x 165' x 99' x 16.5')
- 32 (28' x 184')

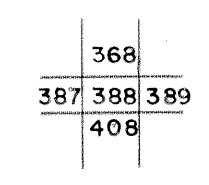
Legend

| | | | |
|-----------------------------|-------|------------------------|-------|
| Property line | ——— | Original lot line | ----- |
| Edge of pavement or roadway | ——— | Deed lot number | (15) |
| Corporation line | ----- | Parcel or index number | (16) |
| District line | ----- | Improvement | ○ |
| County line | ----- | Railroad | —+— |

Revisions

| | | | | | | | |
|---|-------------------|----|---------------------|--------|----|------------------|--------|
| 1 | 10-3-63 | 9 | Rev. to 3-1-89 | REB | 17 | SLS INC. 3/4/98 | JWM |
| 2 | 6-3-66 | 10 | OGIS 1/6/91 | DSH | 18 | SLS INC. 1/28/99 | DSW |
| 3 | 11-27-78 | 11 | OGIS 3-19-92 | TL | 19 | SLS INC. 2/21/00 | JAW |
| 4 | REV. TO 7-1-83 | 12 | OGIS 2/1/93 | DSH | 20 | ESI 2/2/01 | REK |
| 5 | 7-1-84 | 13 | OGIS 12/12/93 | SAJ | 21 | ESI 2/20/02 | REK |
| 6 | REV. TO 7-1-85 | 14 | OGIS 2-95 | HD | 22 | 3/21/05 | S.B.H. |
| 7 | July, 1986 | 15 | O.G.I.S. 4-1-96 | J.E.B. | 23 | 3/28/06 | S.B.H. |
| 8 | Revised to 7-1-87 | 16 | SLS INC. - DDC 5/97 | | 24 | 3/24/07 | S.B.H. |

KEY MAP



TUCKER COUNTY
STATE OF WEST VIRGINIA
Office of Assessor

DISTRICT
DRY FORK

SHEET NO: 388

Date, Aerial Photography: Nov. 1961
Photo No: _____
Date, Map: Dec. 1962
Scale: 1" = 400'

For Tax Purposes Only
Prepared by
MICHAEL BAKER, JR., INC.
Consulting Engineers
Rochester, Pennsylvania