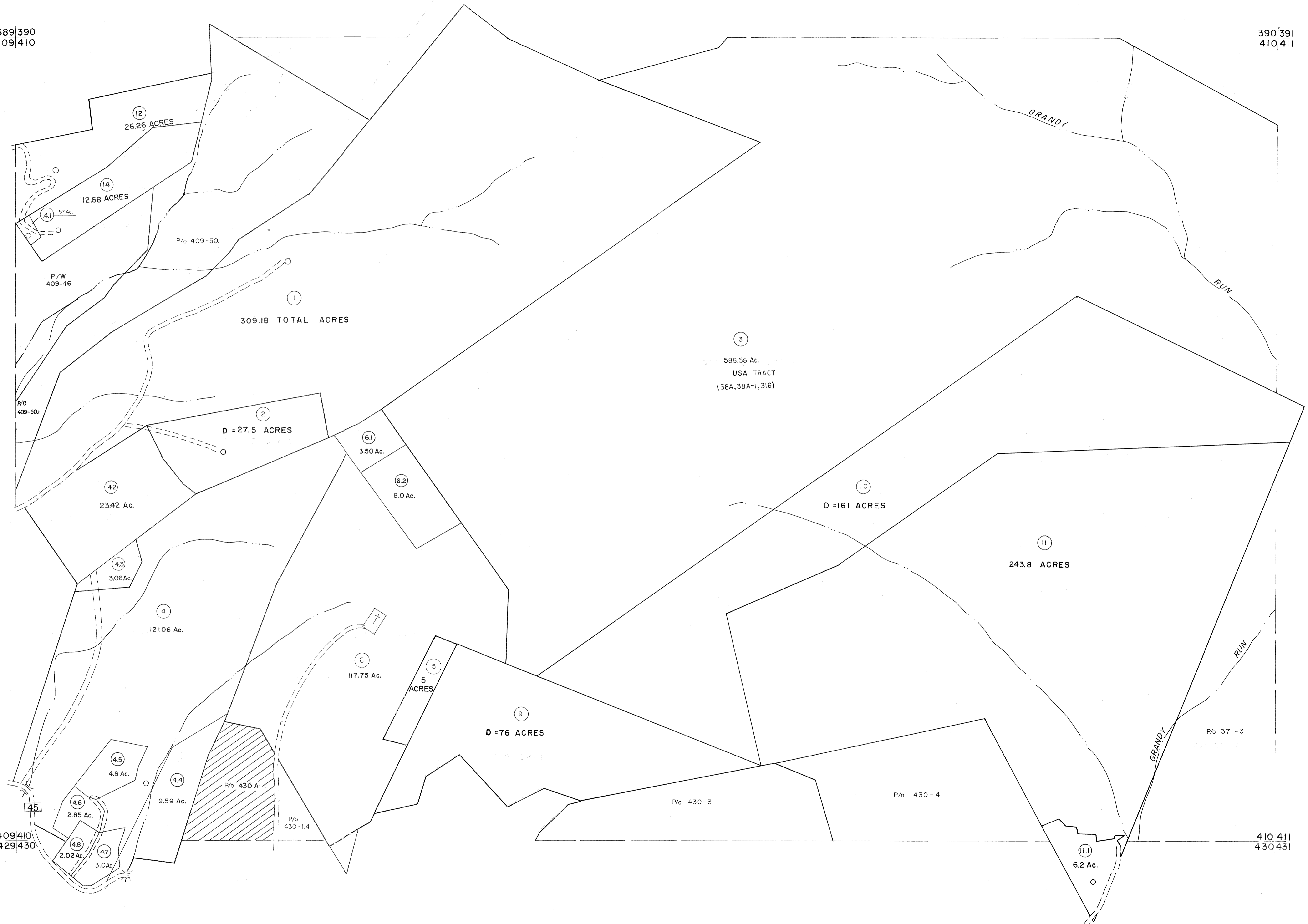


389|390  
409|410

390|391  
410|411



For Tax Purposes Only

Prepared by  
MICHAEL BAKER, JR., INC.  
Consulting Engineers  
Rochester, Pennsylvania

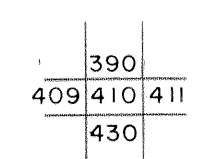
Legend

Property line	—	Original lot line	—
Edge of pavement or roadway	—	Deed lot number	(13)
Corporation line	—	Parcel or index number	(22)
District line	—	Improvement	○
County line	—	Railroad	—

Revisions

1	11-27-78	DA	9	SLS INC. - DDC	5/97	17
2	REV. TO 7-1-83	NCS	10	SLS INC.	3/4/98	JWM
3	7-1-84	L.E.S.	11	SLS INC.	1/28/99	DSW
4	REV. TO 7-1-85	NCS	12	ES1	2/12/02	REK
5	REV. TO 3-1-89	R.E.B.	13	ES1	2/20/03	REK
6	OGIS	2/11/93	DSH	H&S	2/04	REK
7	OGIS	12/12/93	SAJ		3/21/05	SBH
8	O.G.I.S	4-1-96	J.E.B		3/18/06	SBH

KEY MAP



TUCKER COUNTY  
STATE OF WEST VIRGINIA  
Office of Assessor

DISTRICT

DRY FORK

SHEET NO: 410

Date, Aerial Photography: Nov, 1961 Date, Map: Dec, 1962  
Photo No: Scale: 1" = 400'