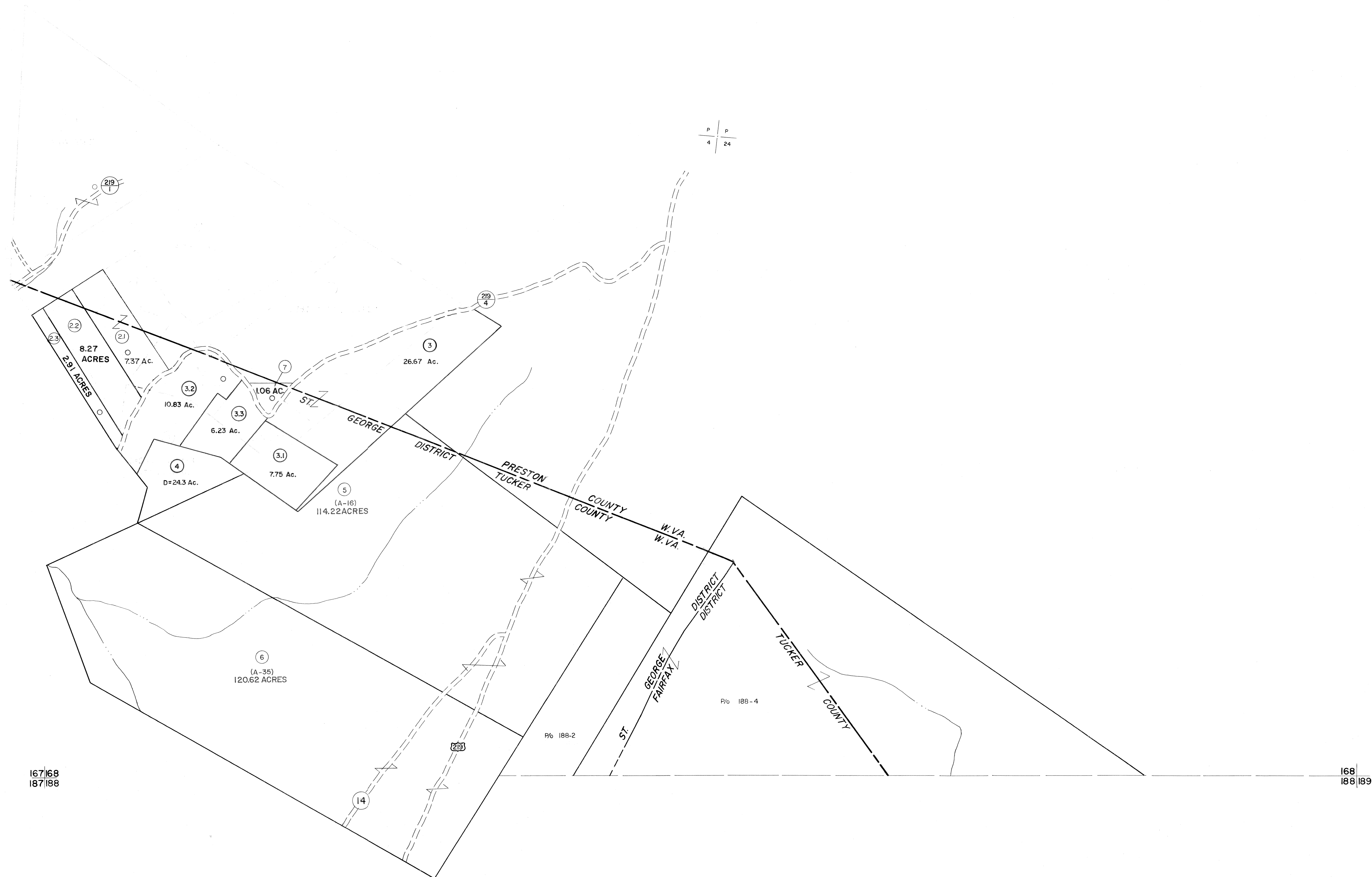


147  
167|168

168



167|168  
187|188

168  
188|189

**For Tax Purposes Only**

Prepared by  
**MICHAEL BAKER, JR., INC.**  
Consulting Engineers  
Rochester, Pennsylvania

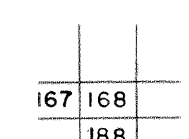
**Legend**

Property line	———	Original lot line	-----
Edge of pavement or roadway	———	Deed lot number	(15)
Corporation line	-----	Parcel or index number	(29)
District line	-----	Improvement	o
County line	-----	Railroad	+

**Revisions**

No.	Date	By	Description	No.	Date	By	Description
1	11/17/78	D.G.		9	3/26/07	S&H	
2	REVISED TO 7-1-83			10			
3	REV. TO 7-1-86	NCS		11			
4	REV. TO 3-1-89	NCS		12			
5	OGIS 12/30/90	DSH		13			
6	OGIS 3-19-92	TL		14			
7	OGIS 1/24/93	DSH		15			
8	O.G.I.S. 4-1-98	J.E.B.		16			

**KEY MAP**



**TUCKER COUNTY**

STATE OF WEST VIRGINIA

Office of Assessor

DISTRICT

**ST. GEORGE  
FAIRFAX**

**SHEET NO: 168**

Date, Aerial Photography: November, 1961 Date, Map: Dec., 1962  
Photo No: Scale: 1" = 400'