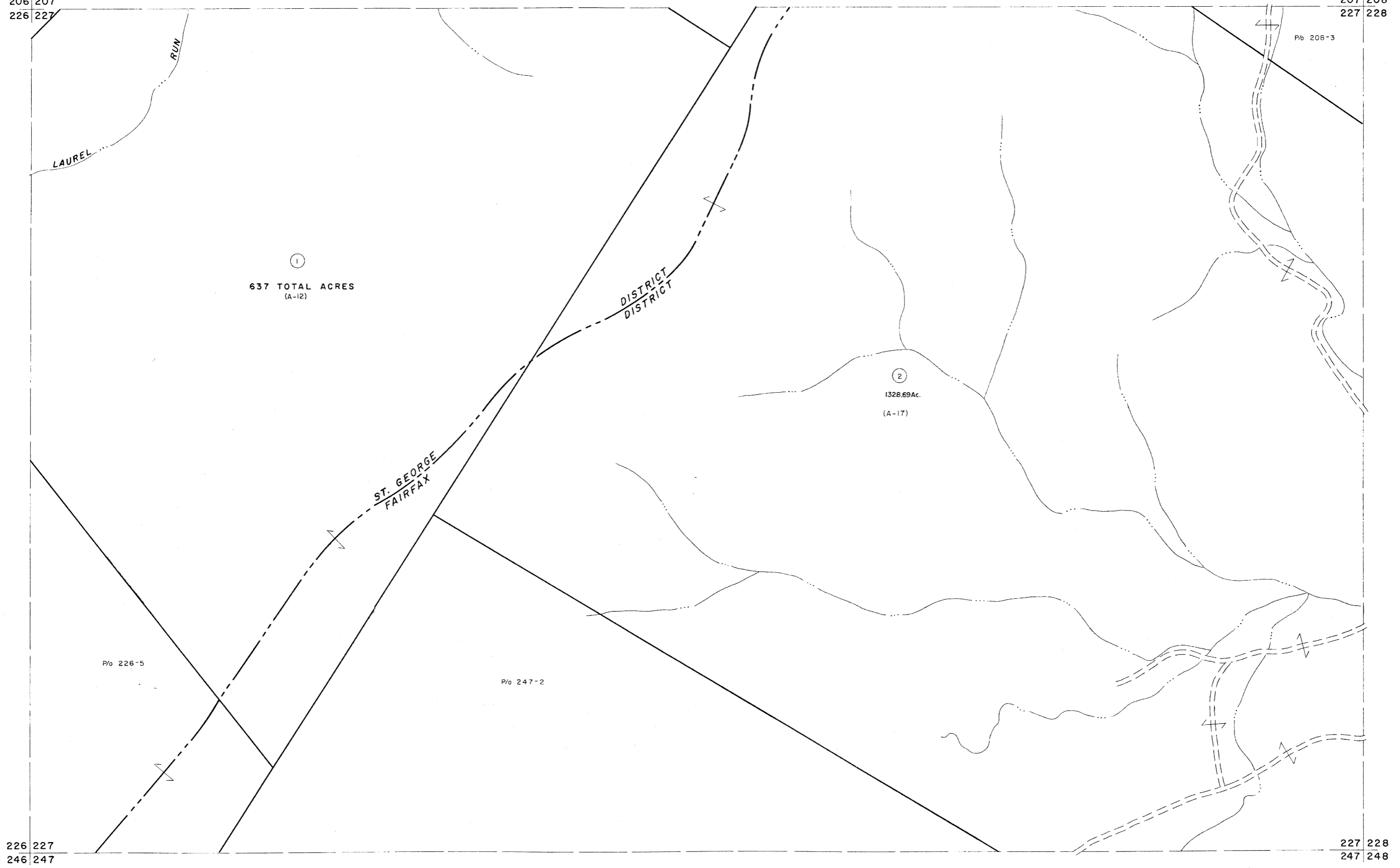


206 207
226 227

207 208
227 228



226 227
246 247

227 228
247 248

For Tax Purposes Only
 Prepared by
MICHAEL BAKER, JR., INC.
 Consulting Engineers
 Rochester, Pennsylvania

Legend	
Property line	Original lot line
Edge of pavement or roadway	Dead lot number
Corporation line	Parcel or index number
District line	Improvement
County line	Railroad

Revisions			
1	REV. TO 7-1-86	NCS	10
2	REV. TO 3-1-89	REB	11
3	6-22-08	H45	12
4	6-21-07	H45	13
5			14
6			15
7			16
8			17



TUCKER COUNTY
 STATE OF WEST VIRGINIA
 Office of Assessor

DISTRICT
FAIRFAX-ST. GEORGE
 SHEET NO: **227**
 Date, Aerial Photography: Nov., 1961 Date, Map: Dec., 1962
 Photo No: Scale: 1" = 400'