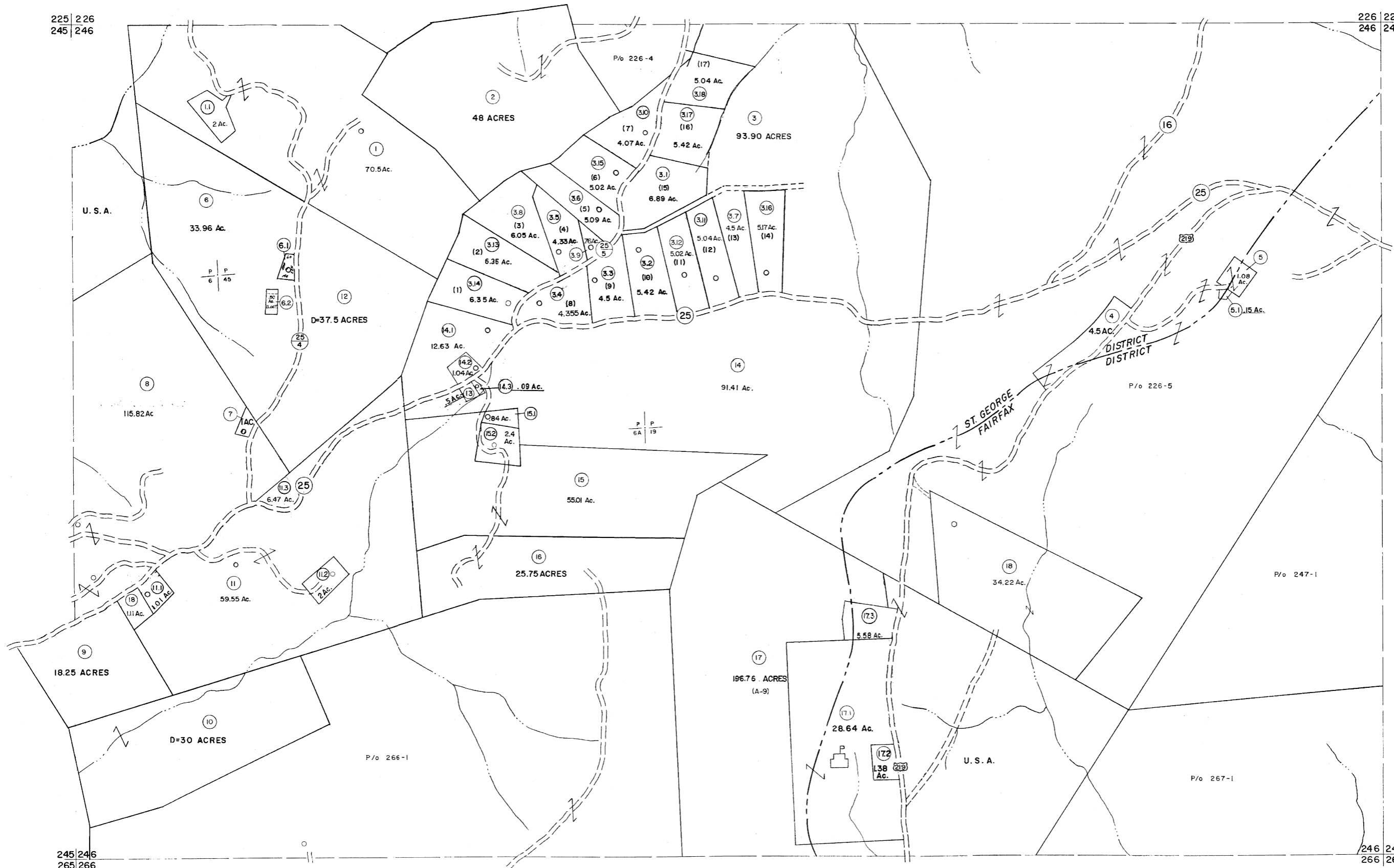


225 | 226  
245 | 246

226 | 227  
246 | 247



245 | 246  
265 | 266

246 | 247  
266 | 267

For Tax Purposes Only

Prepared by  
**MICHAEL BAKER, JR., INC.**  
Consulting Engineers  
Rochester, Pennsylvania

**Legend**

Property line	---	Original lot line	---
Edge of pavement or roadway	---	Deed lot number	(15)
Corporation line	---	Parcel or index number	(15)
District line	---	Improvement	---
County line	---	Railroad	---

**Revisions**

1	11-21-78	T.G.	9	OGIS	3-19-92	TL	17	ESI	2/20/03	REK
2	Revised to 7-1-88		10	OGIS	12/11/93	SAJ	18	HBS	2/19/03	
3	7-1-84	L.E.S.	11	OGIS	2-95	HD	19	3/21/05	S.B.H.	
4	REV. TO 7-1-86	NCS	12	O.G.I.S.	4-1-96	J.E.B.	20	3/24/07	S.B.H.	
5	REV. TO 7-1-87		13	SLS INC.	5/97		21	4-21-09	H.S.	
6	REV. TO 3-1-89	R.E.S.	14	SLS INC.	2/23/98	J.W.M.	22			
7	REV. TO 3-1-89	R.E.S.	15	ESI	2/8/02	REK	23			
8	OGIS	12/31/90	DSH	16			24			

**KEY MAP**



**TUCKER COUNTY**  
STATE OF WEST VIRGINIA  
Office of Assessor

DISTRICT **ST. GEORGE FAIRFAX**

**SHEET NO: 246**

Date, Aerial Photography: Nov., 1961 Date, Map: Dec., 1962  
Photo No. Scale: 1" = 400'