

227 228
247 248

P/O 227 - 2

228 229
248 249

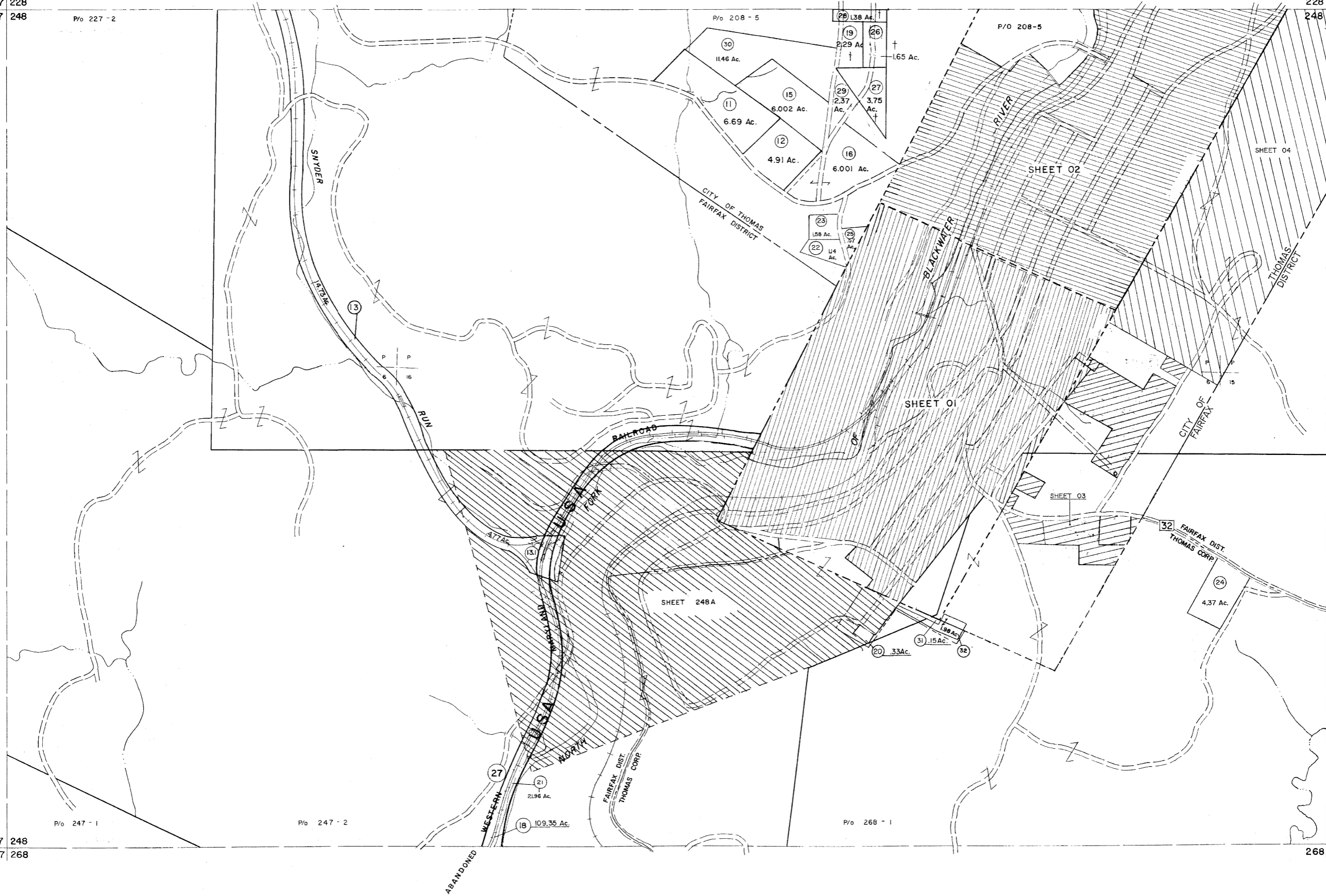
247 248
267 268

P/O 247 - 1

P/O 247 - 2

P/O 268 - 1

249
268 269



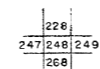
Legend

Property line	—————	Original lot line	-----
Edge of pavement or roadway	-----	Dead lot number	(15)
Corporation line	-----	Parcel or index number	(9)
District line	-----	Improvement	o
County line	-----	Railroad	—+—+—+—

Revisions

1	11-27-78	T.C.	9	O.G.I.S. 4-1-96	J.E.B.	17	6-27-02	++4.5
2	REV. TO 7-1-86	NCS	11	SLS INC. - DDC 5/97		18	6-21-09	++4.5
3	REV. TO 3-1-89	REB	12	SLS INC. 2/23/98	J.W.M.	20		
4	OGIS 1/1/91	DSH	13	SLS INC. 1/27/99	DSW	21		
5	OGIS 3-19-92	TL	14	SLS INC. 3/1/00	J.W.M.	22		
6	OGIS 1/25/93	DSH	15	ESI	2/8/02	REK	23	
7	OGIS 2-95	HD	16	3/21/05	S.B.H.	24		

KEY MAP



For Tax Purposes Only

Prepared by
MICHAEL BAKER, JR., INC.
Consulting Engineers
Rochester, Pennsylvania

TUCKER COUNTY
STATE OF WEST VIRGINIA
Office of Assessor

DISTRICT

FAIRFAX - DAVIS

SHEET NO: 248

Date, Aerial Photography: November, 1961 Date, Map: Dec. 1962
Photo No: Scale: 1" = 400'