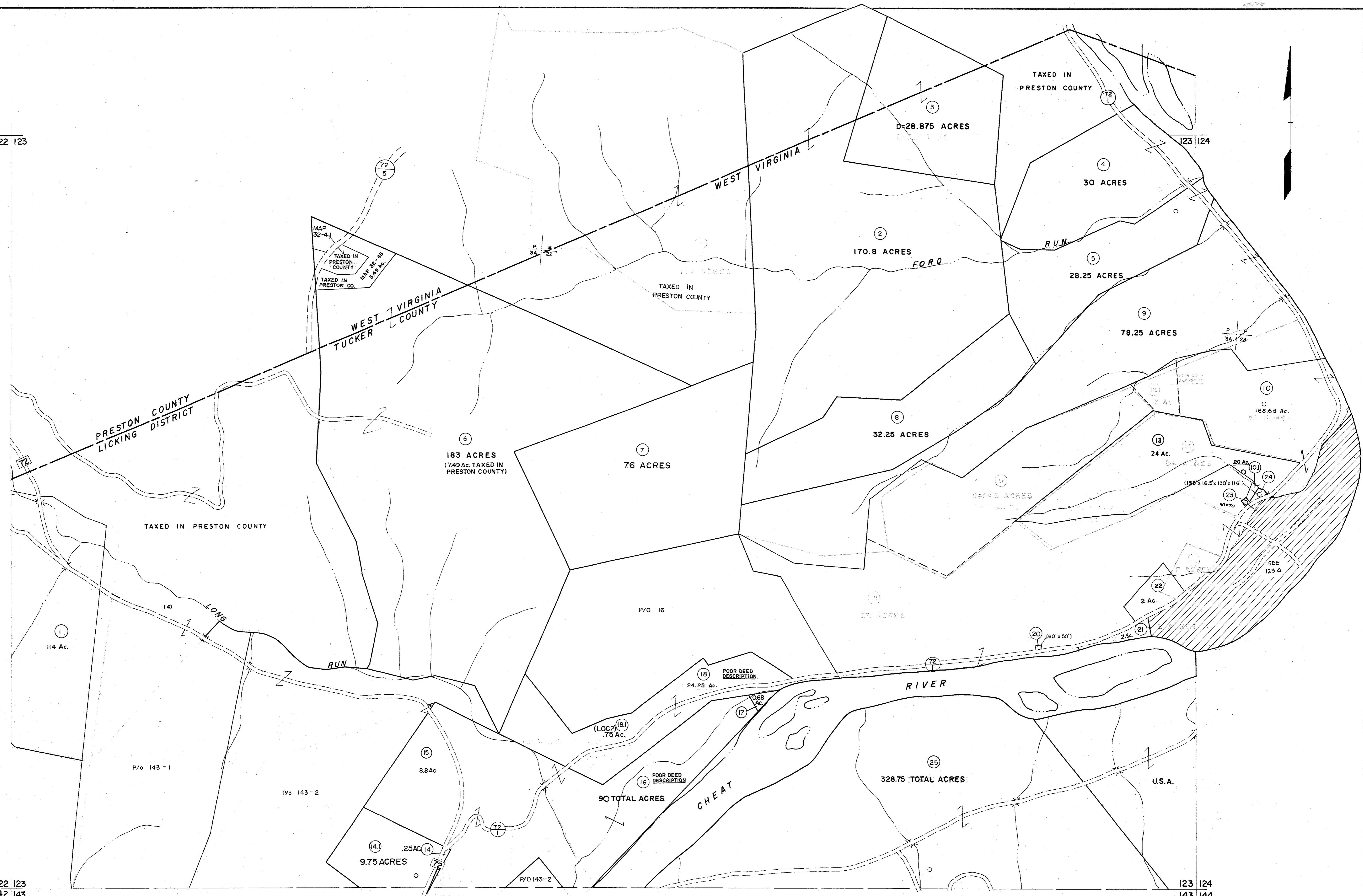


122 123

122 123
142 143

123 124

123 124
143 144

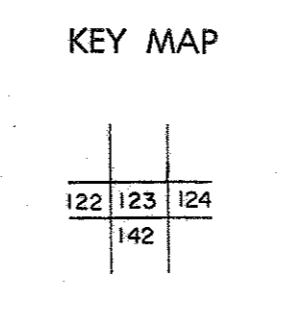


For Tax Purposes Only

Prepared by
MICHAEL BAKER, JR., INC.
Consulting Engineers
Rochester, Pennsylvania

Legend	
Property line	—
Edge of pavement or roadway	—
Corporation line	—
District line	—
County line	—
Original lot line	— (15)
Dead lot number	— (16)
Parcel or index number	— (17)
Improvement	— (18)
Railroad	— (19)

Revisions	
1	6-9-75 J.C.
2	11/14/78 D.G.
3	Revised 7-1-88
4	REV. TO 7-1-86 NCS
5	REV. TO 3-1-89 NCS
6	OGIS 12/29/90 DSH
7	OGIS 3-19-92 TL
8	
9	OGIS 1/23/92 DSH
10	O.G.I.S 4-1-96 J.E.B
11	SLS INC. - DDC 5/97
12	SLS INC. 2/19/98 DSW
13	5-4-13 J+S
14	5/26/15 SBH
15	
16	
17	
18	
19	
20	
21	
22	
23	
24	



TUCKER COUNTY
STATE OF WEST VIRGINIA
Office of Assessor

DISTRICT
LICKING

SHEET NO: 123

Date, Aerial Photography: November, 1961 Date, Map: Dec., 1962
Photo No. Scale: 1" = 400'