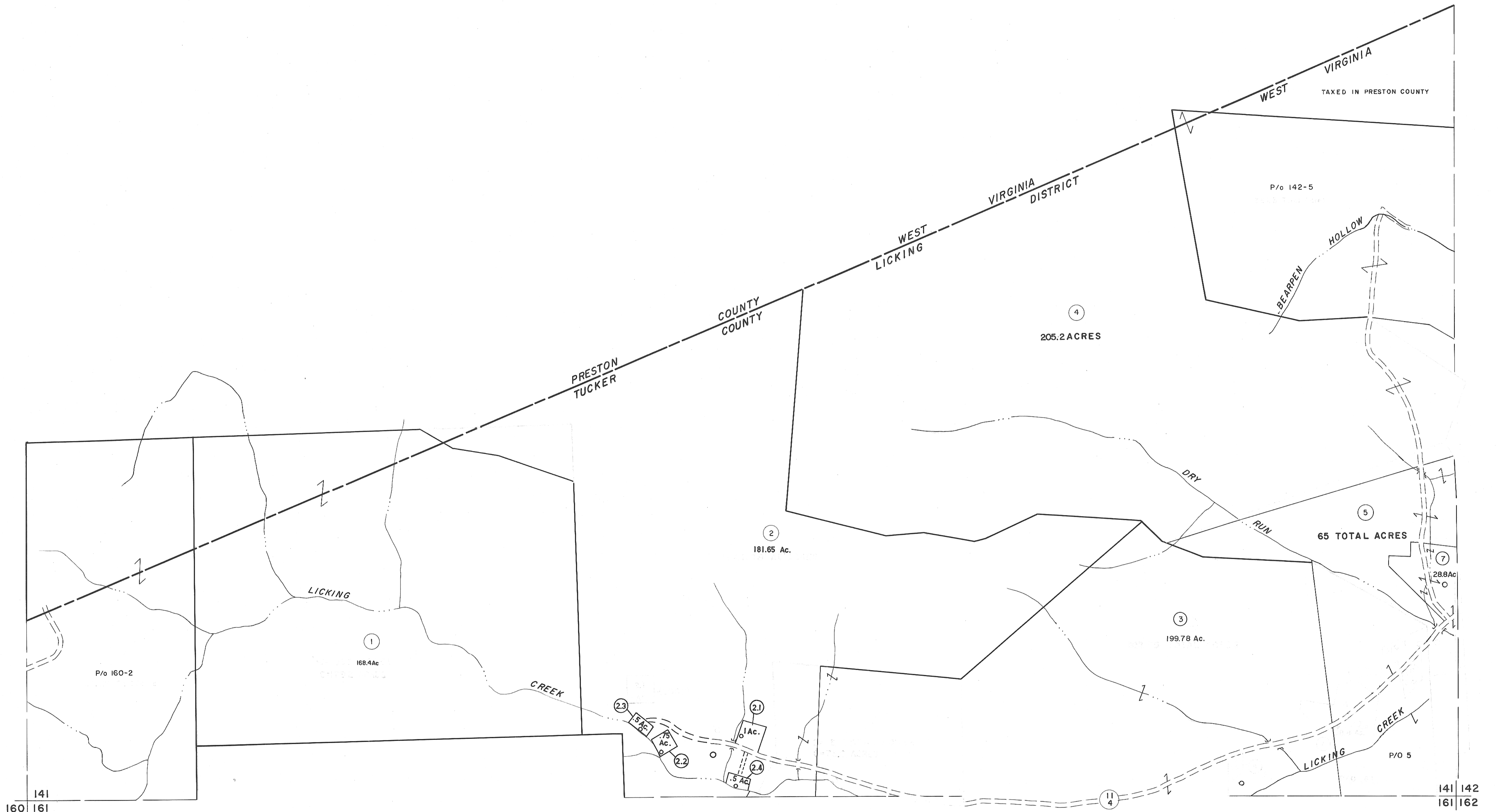


141

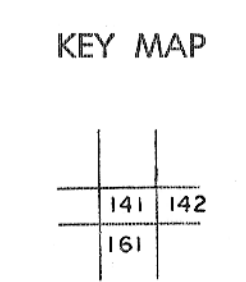
122  
141 142



For Tax Purposes Only  
 Prepared by  
**MICHAEL BAKER, JR., INC.**  
 Consulting Engineers  
 Rochester, Pennsylvania

Legend	
Property line	—
Edge of pavement or roadway	- - - -
Corporation line	- · - · -
District line	- - - -
County line	- - - -
Original lot line	- - - -
Deed lot number	(15)
Parcel or index number	(29)
Improvement	o
Railroad	—+—+—+—

Revisions	
1	Revised to 7-1-88
2	7-1-84 L.E.S.
3	REV. TO 7-1-86 NCS
4	OGIS 12/29/90 DSH
5	OGIS 3-19-92 TL
6	OGIS 4-95 HD
7	7/3/11 SBH
8	5-4-13 H 4.3



**TUCKER COUNTY**  
 STATE OF WEST VIRGINIA  
 Office of Assessor

DISTRICT **LICKING**  
 SHEET NO: 141  
 Date, Aerial Photography: November, 1961 Date, Map: Dec., 1962  
 Photo No: Scale: 1" = 400'