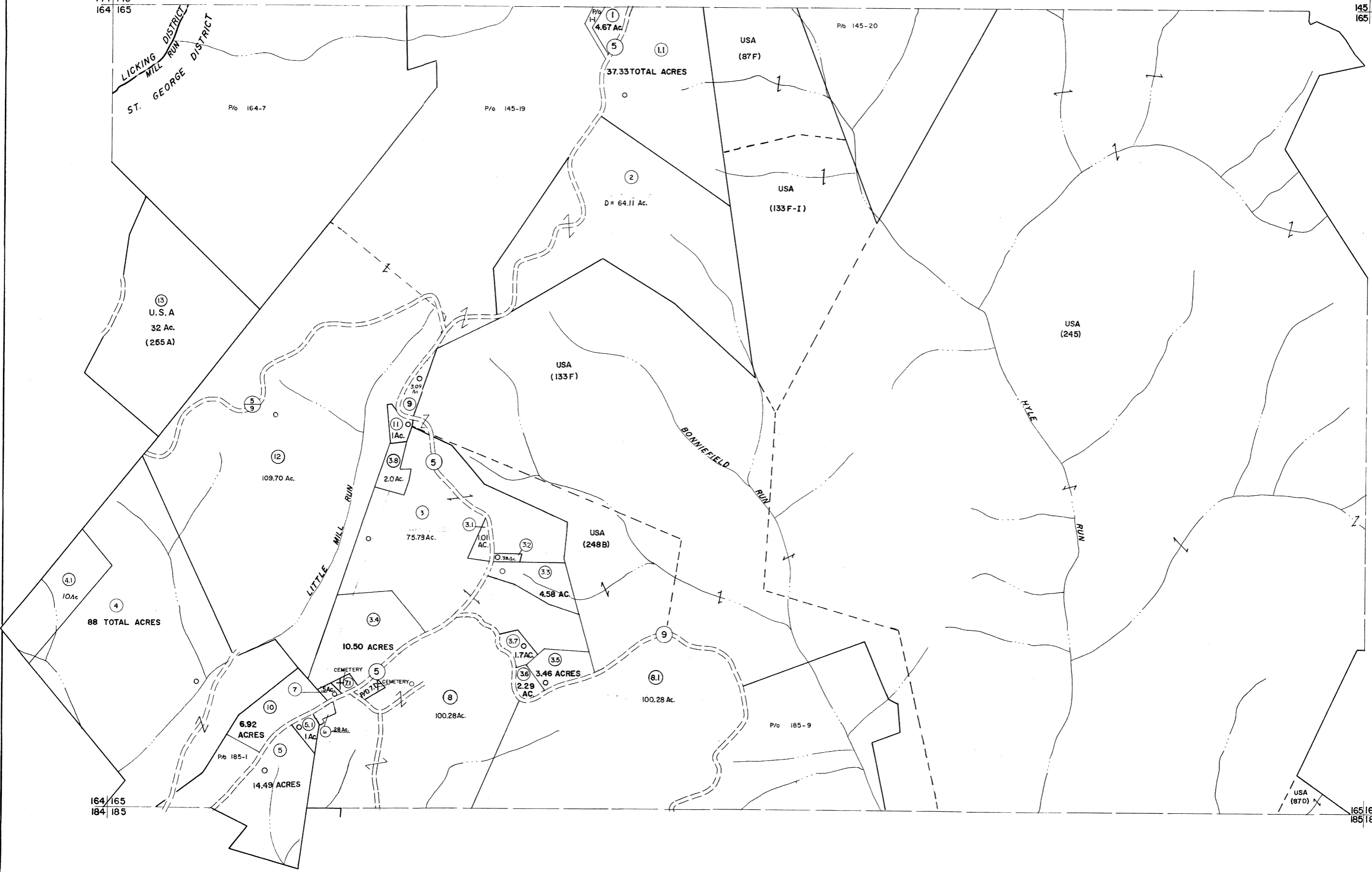


144 | 145
164 | 165

145 | 146
165 | 166



For Tax Purposes Only

Prepared by
MICHAEL BAKER, JR., INC.
Consulting Engineers
Rochester, Pennsylvania

Legend

- Property line ————
- Edge of pavement or roadway ————
- Corporation line ————
- District line ————
- County line ————
- Original lot line ————
- Deed lot number (15)
- Parcel or index number (99)
- Improvement (O)
- Railroad (—+—)

Revisions

1	6-2-66	9	OGIS 1/24/93	DSH	17	5-8-10	4-4-5
2	6-6-75	10	OGIS 2-95	HD	18		
3	REVISED TO 7-1-83	11	SLS INC. - DDC 5/97		19		
4	7-1-84	12	L.E.S. SLS INC. 2/19/98	DSW	20		
5	REV. TO 7-1-86	13	NCS SLS INC. 1/27/99	DSW	21		
6	REVISED TO 7-1-87	14	ESI 1/30/01	REK	22		
7	REV TO 3-1-89	15	NCS ESI 2/7/02	REK	23		
8	OGIS 3-19-92	16	HBS 2/22/04		24		

KEY MAP



TUCKER COUNTY
STATE OF WEST VIRGINIA
Office of Assessor

DISTRICT **ST. GEORGE LICKING**

SHEET NO: 165

Date, Aerial Photography: November, 1961 Date, Map: Dec., 1962
Photo No. Scale: 1" = 400'