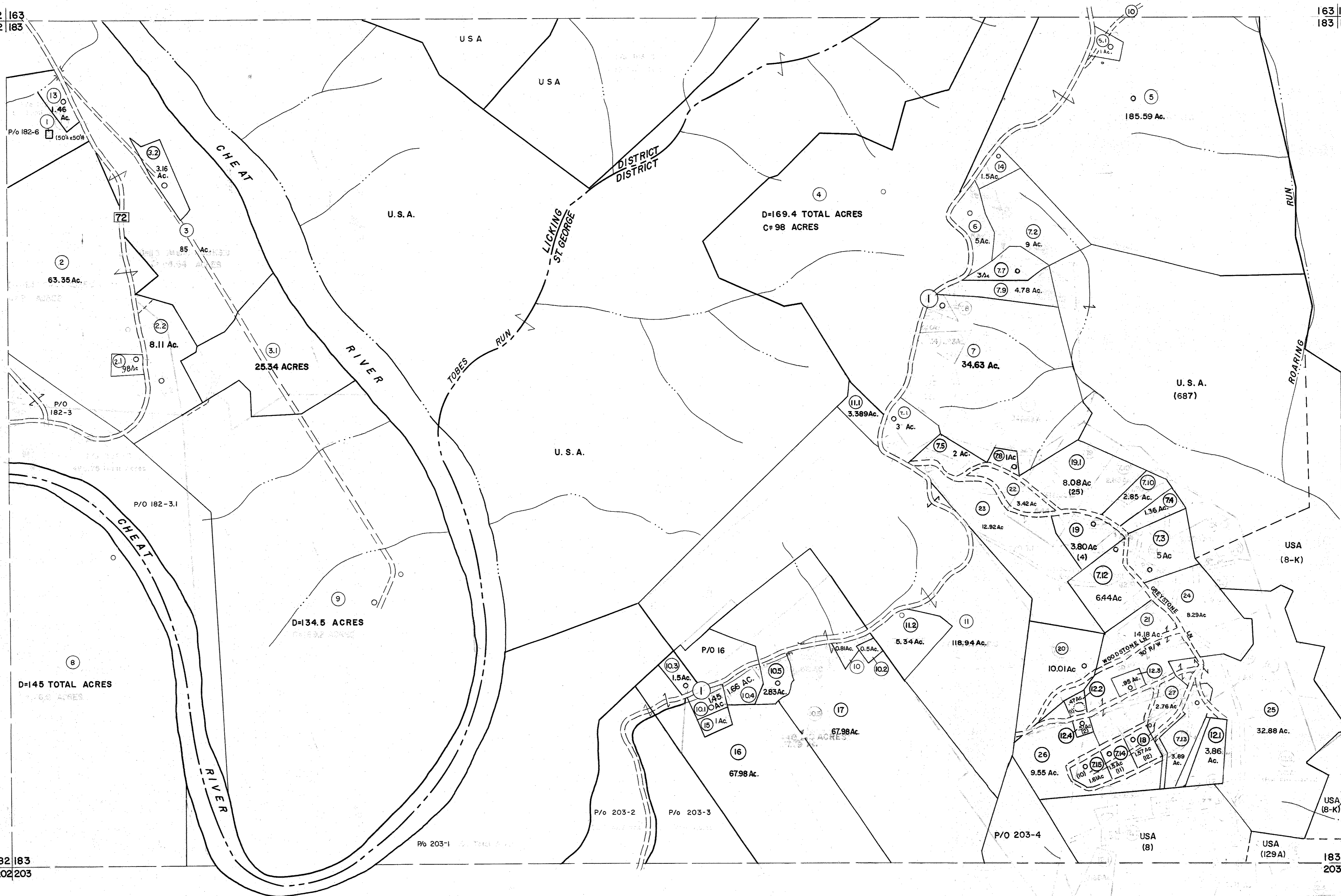


162 | 163
182 | 183

163 | 164
183 | 184



182 | 183
202 | 203

183 | 184
203 | 204

For Tax Purposes Only

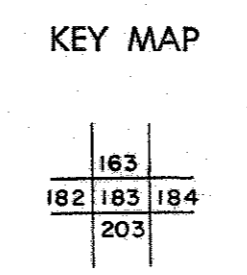
Prepared by
MICHAEL BAKER, JR., INC.
 Consulting Engineers
 Rochester, Pennsylvania

Legend

Property line	—	Original lot line	—
Edge of pavement or roadway	—	Deed lot number	(15)
Corporation line	—	Parcel or index number	(16)
District line	—	Improvement	—
County line	—	Railroad	—

Revisions

1	6-6-75	JC	9	OGIS	3-19-92	TL	17	7/4/11	S&H
2	11/20/78	OG	10	OGIS	1/24/93	DSH	18	5-4-13	H&S
3	7-1-83	CR	11	OGIS	12/11/93	SAJ	19		
4	7-1-84	L.E.S.	12	SLS INC.	2/19/98	DSW	20		
5	REV. TO 7-1-86	NCS	13	H&S	2/22/04		21		
6	Revised to 7-1-87	DF	14		3/21/05		S&H	22	
7	REV. TO 3-1-89	NCS	15		3/24/07		S&H	23	
8	OGIS	12/30/90	DSH	16	5-8-10		H&S	24	



TUCKER COUNTY
 STATE OF WEST VIRGINIA
 Office of Assessor

DISTRICT LICKING ST. GEORGE

SHEET NO: 183

Date, Aerial Photography: Nov., 1961
 Photo No. Date, Map: Dec., 1962
 Scale: 1" = 400'