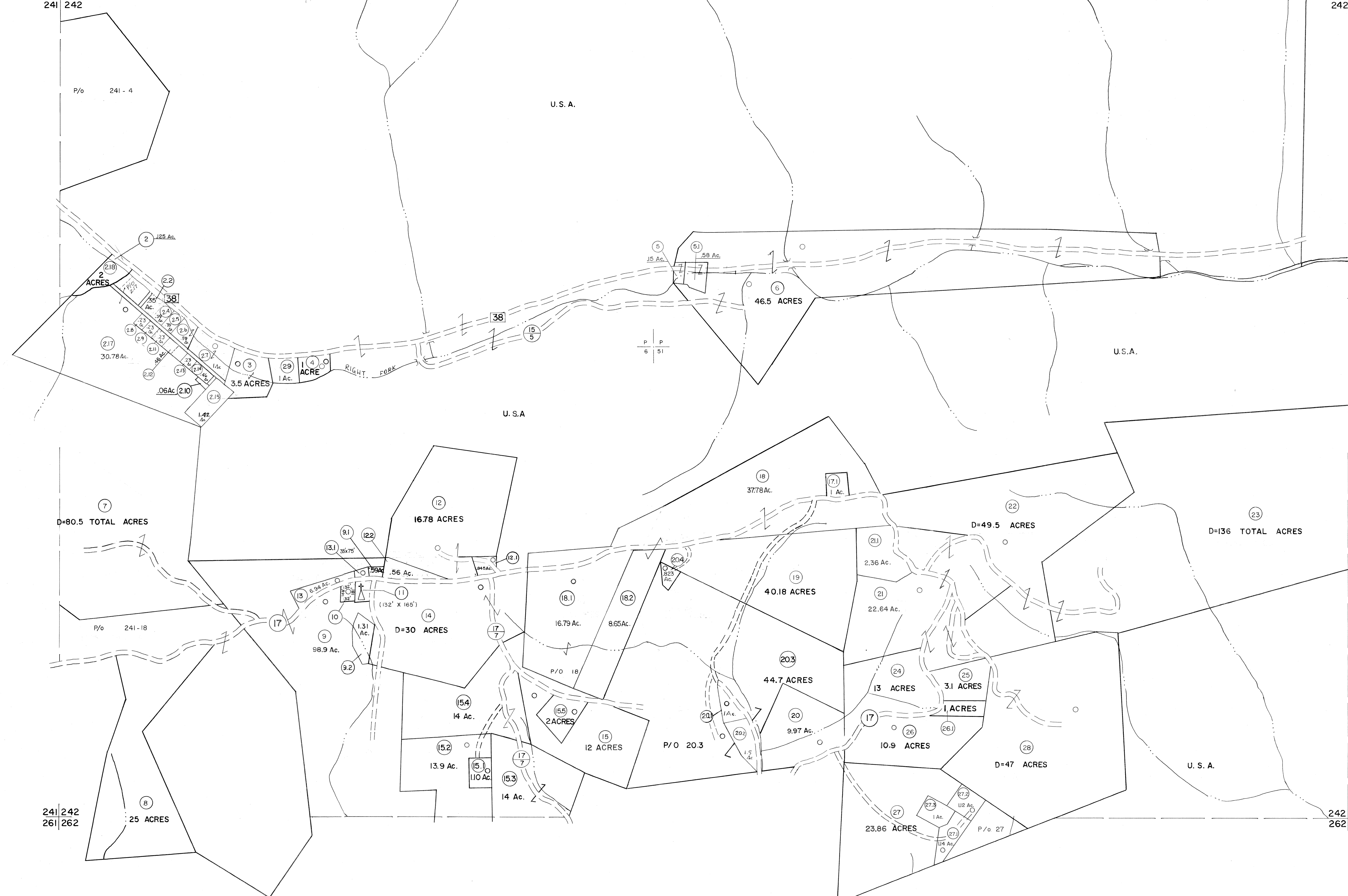


221 222  
241 242

222 223  
242 243



For Tax Purposes Only

Prepared by  
MICHAEL BAKER, JR., INC.  
Consulting Engineers  
Rochester, Pennsylvania

| Legend                      |         |
|-----------------------------|---------|
| Property line               | —————   |
| Edge of pavement or roadway | —————   |
| Corporation line            | —————   |
| District line               | —————   |
| County line                 | —————   |
| Original lot line           | -----   |
| Deed lot number             | (15)    |
| Parcel or index number      | (29)    |
| Improvement                 | ○       |
| Railroad                    | —+—+—+— |

| Revisions |                       |
|-----------|-----------------------|
| 1         | JUNE 75 PAM           |
| 2         | 11-21-78 DG           |
| 3         | Revised to 7-1-88     |
| 4         | 7-1-84 L.E.S.         |
| 5         | Revised to 7-1-85     |
| 6         | REV. TO 7-1-86 NCS    |
| 7         | REV. TO 3-1-89 R.E.B. |
| 8         | OGIS 12/31/90 DSH     |
| 9         | OGIS 3-19-92 TL       |
| 10        | OGIS 1/25/93 DSH      |
| 11        | OGIS 12/11/93 SAJ     |
| 12        | O.G.I.S 4-1-96 J.E.B  |
| 13        | SLS INC. - DDC 5/97   |
| 14        | SLS INC. 2/23/98 JWM  |
| 15        | SLS INC. 1/27/99 DSW  |
| 16        | ESI 1/31/01 REK       |
| 17        | ESI 2/8/02 REK        |
| 18        | H&S 2/22/04           |
| 19        | 3/24/07 S&H           |
| 20        |                       |
| 21        |                       |
| 22        |                       |
| 23        |                       |
| 24        |                       |

KEY MAP

TUCKER COUNTY  
STATE OF WEST VIRGINIA  
Office of Assessor

DISTRICT CLOVER

SHEET NO: 242

Date, Aerial Photography: November, 1961 Date, Map: Dec, 1962  
Photo No: Scale: 1" = 400'