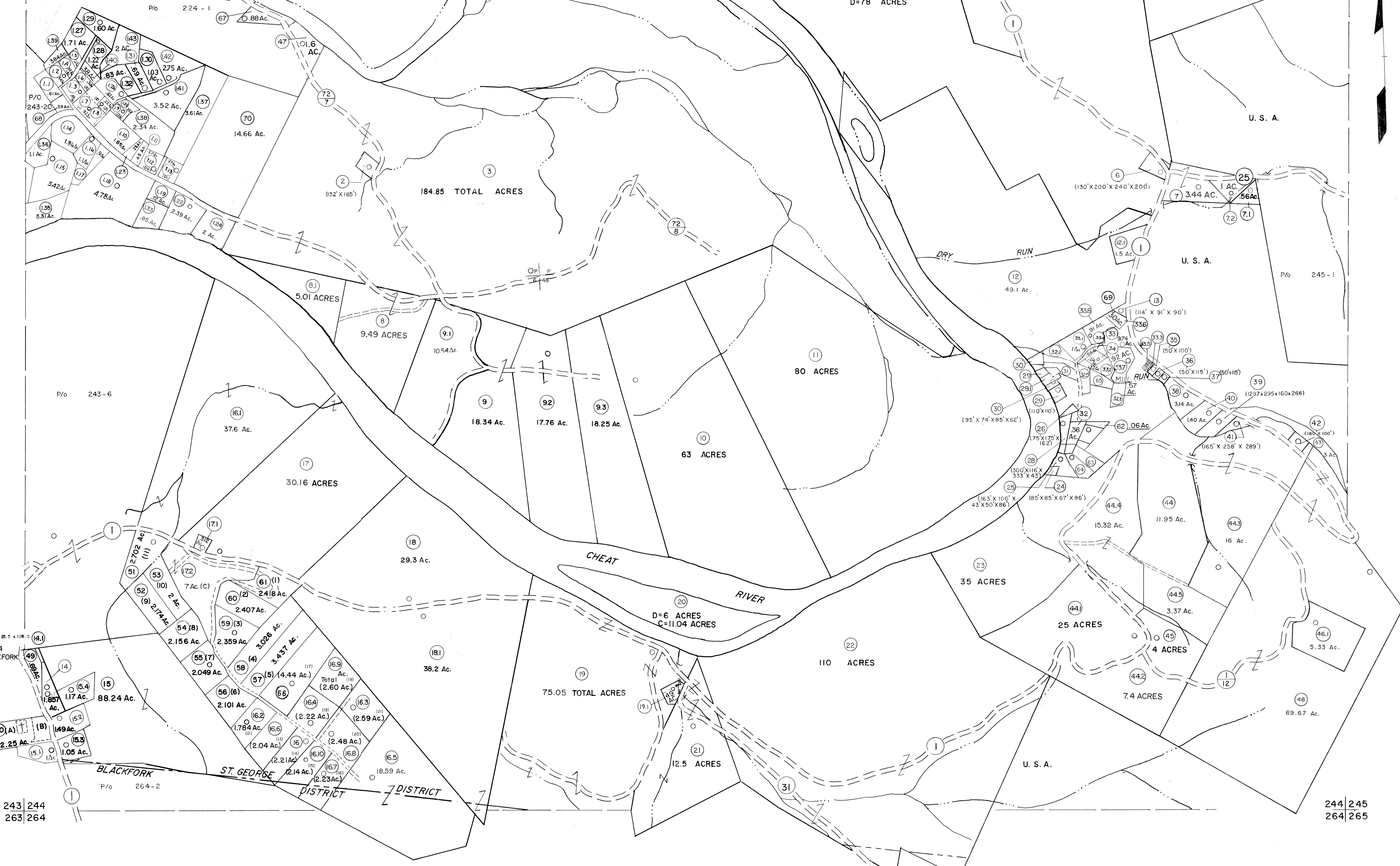


223 224  
243 244

224 225  
244 245



P14, 15, 15.1, 15.2, 15.3, 15.4  
ARE TAXED IN BLACKFORK  
DISTRICT

BLACKFORK  
ST. GEORGE  
DISTRICT

For Tax Purposes Only  
Prepared by  
MICHAEL BAKER, JR., INC.  
Consulting Engineers  
Rochester, Pennsylvania

Legend	
Property line	Original lot line
Edge of pavement or roadway	Deed lot number
Corporation line	Parcel or index number
District line	Improvement
County line	Railroad

Revisions	
1	10-3-63
2	6-3-64
3	6-3-75
4	11/21/78
5	7-1-84
6	REV. TO 7-1-86
7	REV. TO 7-1-85
8	REV. TO 7-1-86
9	Revised to 7-1-87
10	REV. TO 3-1-89
11	OGIS 12/31/90
12	OGIS 3-19-92
13	OGIS 1/25/93
14	OGIS 12/11/93
15	OGIS 2-95
16	O.G.I.S 4-1-96
17	SLS INC. - DDC 5/97
18	SLS INC. 2/23/98
19	SLS INC. 1/27/99
20	SLS INC. 3/1/00
21	ESI 1/31/01
22	ESI 2/8/02
23	ESI 2/20/03
24	H&S 2/19/04

3/21/05 S&H  
3/28/06 S&H  
KEY MAP  
3/24/07 S&H  
224  
243 244 245  
264

TUCKER COUNTY  
STATE OF WEST VIRGINIA  
Office of Assessor

DISTRICT  
**ST. GEORGE  
BLACKFORK**  
SHEET NO: 244  
Date, Aerial Photography: November, 1961 Date, Map: Dec., 1962  
Photo No: Scale: 1" = 400'