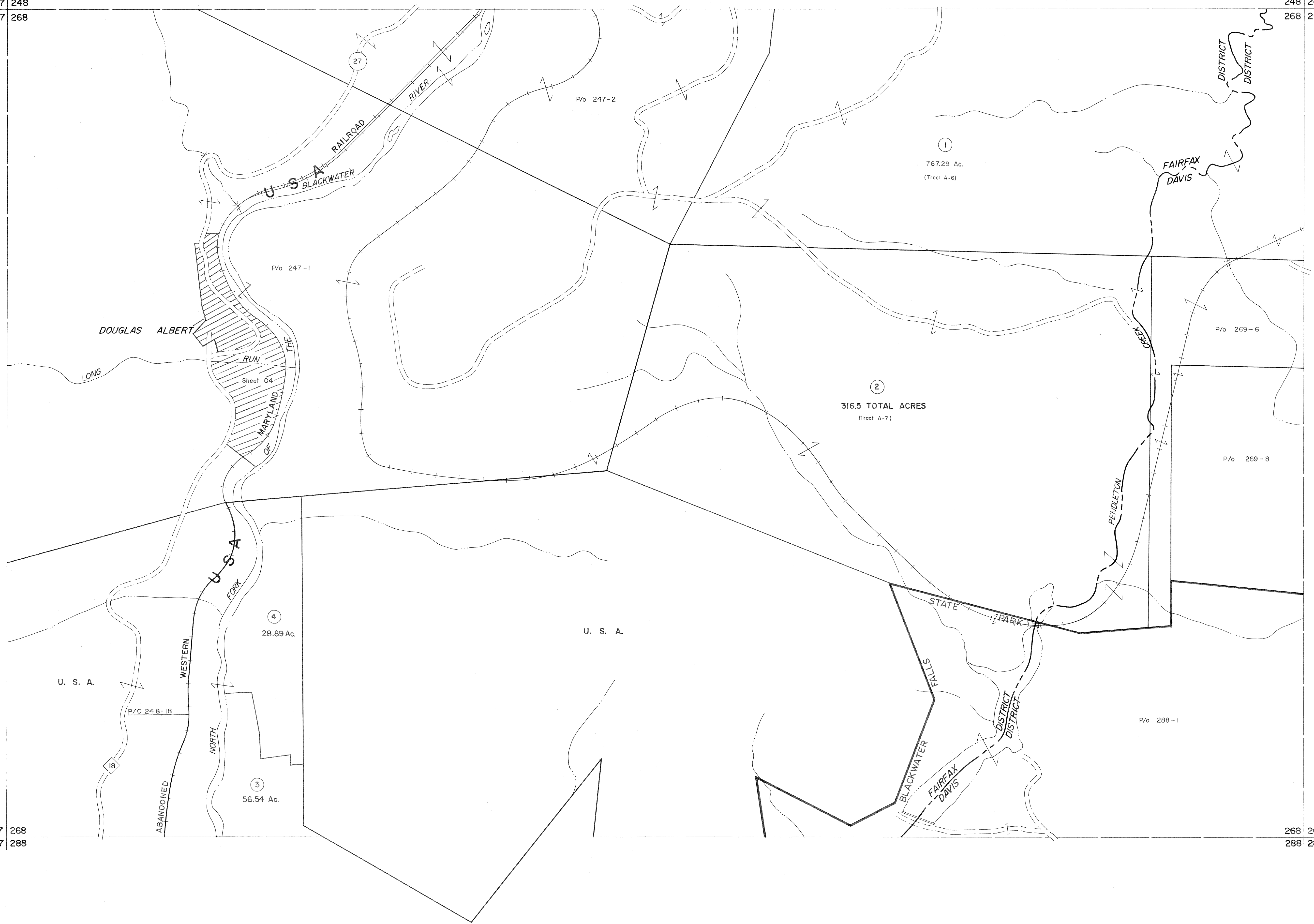


247 248  
267 268

248 249  
268 269

267 268  
287 288

268 269  
288 289



For Tax Purposes Only

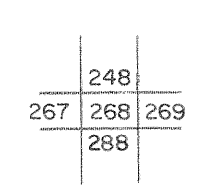
Prepared by  
MICHAEL BAKER, JR., INC.  
Consulting Engineers  
Rochester, Pennsylvania

Legend

Property line	Original lot line
Edge of pavement or roadway	Deed lot number
Corporation line	Parcel or index number
District line	Improvement
County line	Railroad

Revisions			
1	11-27-78	T.E.R.	9
2	Corrected 7-1-83		10
3	July, 1986	TRL	11
4	Rev. to 3-1-89	R.E.B.	12
5	OGIS 1/26/93	DSH	13
6	OGIS 12/12/93	SAJ	14
7	OGIS 2-95	HD	15
8	O.G.I.S 4-1-96	J.E.B	16
9	SLS INC. - DDC 5/97		17
10	SLS INC. 2/23/98	JWM	18
11	ESI 2/20/03	REK	19
	3/21/05	S & H	20
			21
			22
			23
			24

KEY MAP



TUCKER COUNTY  
STATE OF WEST VIRGINIA  
Office of Assessor

DISTRICT  
FAIRFAX DAVIS

SHEET NO: 268

Date, Aerial Photography: November, 1961 Date, Map: Dec., 1962  
Photo No: Scale: 1" = 400'