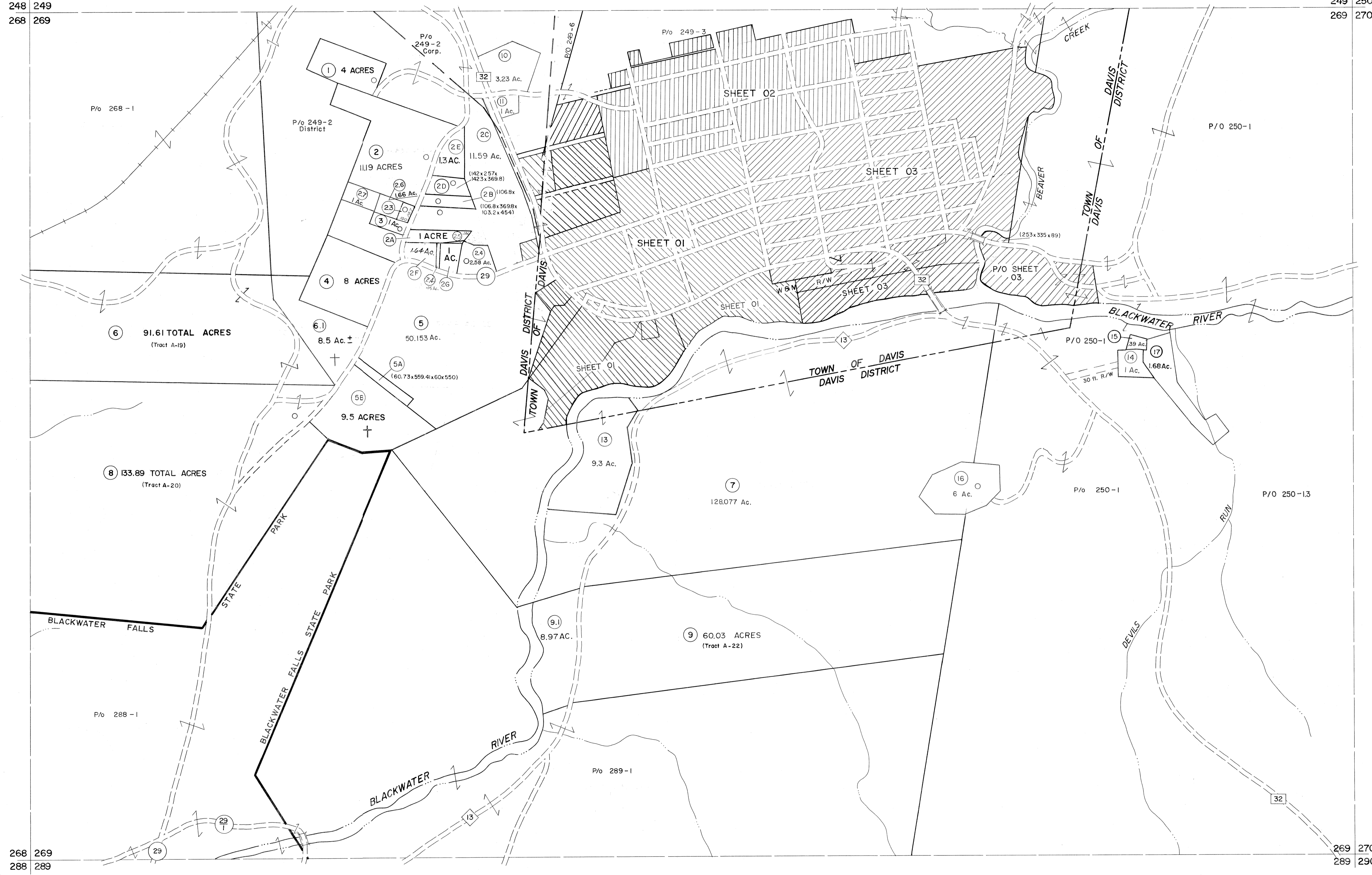


248 249  
268 269

249 250  
269 270

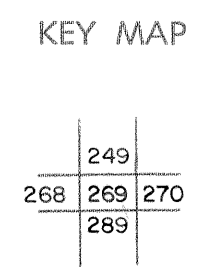


For Tax Purposes Only

Prepared by  
MICHAEL BAKER, JR., INC.  
Consulting Engineers  
Rochester, Pennsylvania

Legend	
Property line	Original lot line
Edge of pavement or roadway	Deed lot number
Corporation line	Parcel or index number
District line	Improvement
County line	Railroad

Revisions			
1	10-3-63	9	OGIS 1/27/93 DSH
2	11-78 BAH	10	OGIS 2-95 HD
3	Revised 7-1-88	11	O.G.I.S 4-1-96 J.E.B
4	Revised to	12	SLS INC. - DDC 5/97
5	July, 1986	13	SLS INC. 2/23/98 JWM
6	REV. TO 3-1-89	14	SLS INC. 1/27/99 DSW
7	OGIS 1/1/91	15	SLS INC. 3/2/00 JWM
8		16	ESI 1/31/01 REK
		17	ESI 2/8/02 REK
		18	ESI 2/20/03 REK
		19	HBS 2/19/04 S & H
		20	3/24/07
		21	
		22	
		23	
		24	



TUCKER COUNTY  
STATE OF WEST VIRGINIA  
Office of Assessor

DISTRICT	DAVIS
SHEET NO:	269
Date, Aerial Photography:	November, 1961
Photo No:	
Date, Map:	Dec., 1962
Scale:	1" = 400'